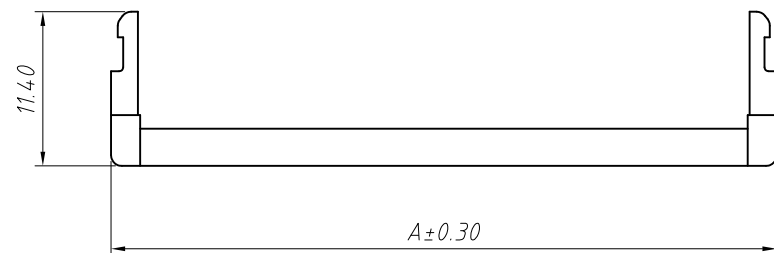
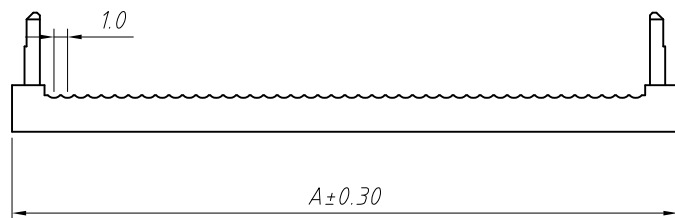
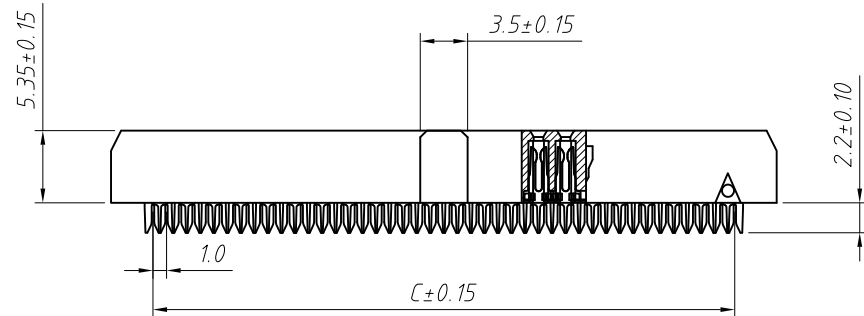
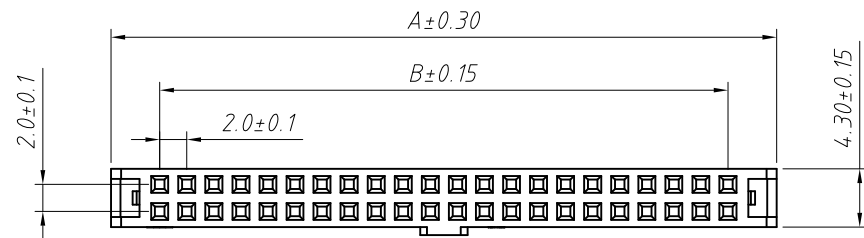
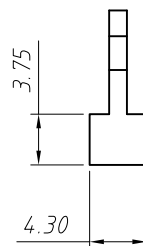
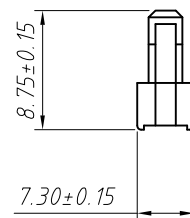
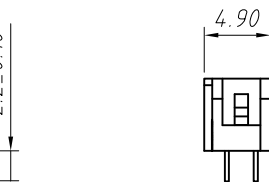


1 RoHS Compliance



Strain Relife



Material:
Housing: PBT,UL 94V-0
Contacts: Brass
Plating: Au or Sn Over Ni

Electrical Characteristics:
Current Rating: 1.0 AMP
Withstand Voltage: 500V AC
Insulator Resistance: 1000M Ohm min
Contact Resistance: 20m Ohm max.
Operating Temperature: -40°C ~ +105°C
Max.Processing Temp: 180°C for 30-60 seconds
(200°C for 10 seconds)



Pin	Dimension mm		
	A	B	C
06	11.20	4.00	5.00
08	13.20	6.00	7.00
10	15.20	8.00	9.00
12	17.20	10.00	11.00
14	19.20	12.00	13.00
16	21.20	14.00	15.00
18	23.20	16.00	17.00
20	25.20	18.00	19.00
24	29.20	22.00	23.00
26	31.20	24.00	25.00
30	35.20	28.00	29.00
34	39.20	32.00	33.00
40	45.20	38.00	39.00
44	49.20	42.00	43.00
50	55.20	48.00	49.00
60	65.20	58.00	59.00
64	69.20	62.00	63.00
68	73.20	66.00	67.00
80	85.20	78.00	79.00

Order Information:

L-KLS1-204B-XX-B

L: RoHS
IDC connectors
2.00mm Pitch
XX-No. of 06 ~ 100pin
Color: _____
B=Black G=Gray L=Blue

ANGLE TOLERANCE	PROJECTION	Description:
±3°		2.0mm Pitch IDC Socket Connector
GENERAL TOLERANCE	UNITS	mm
x.x ±0.30	SHEET SIZE	A4
x.xx ±0.20	Draw:	Daniel 2018-07-10
x.xxx ±0.10	Check:	Daniel 2018-07-10



NingBo KLS ELECTRONIC CO.,L TD.