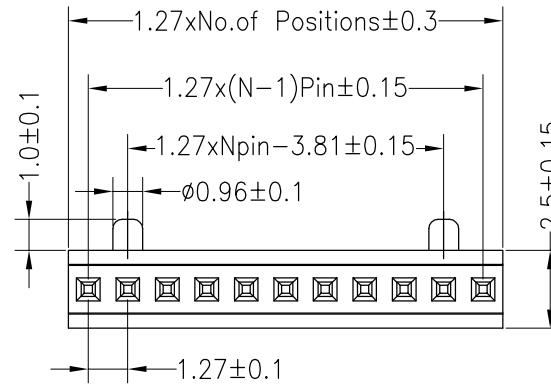


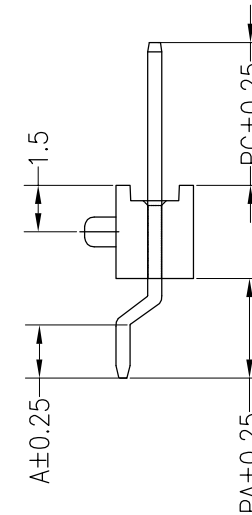
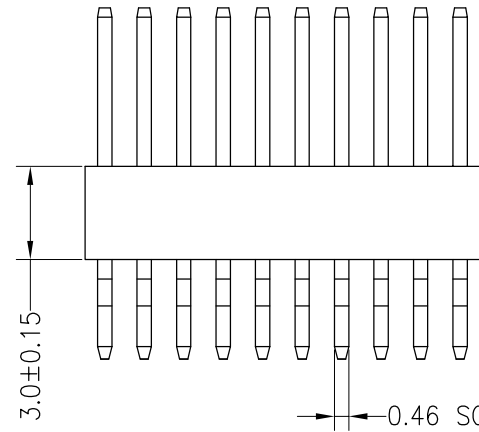
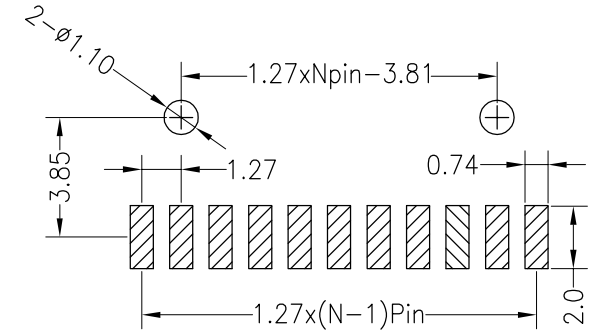
SPECIFICATIONS

Rated Current:1.0AMP
 Contact Resistance:20mΩ Max
 Withstand Voltage:500V AC/DC
 Insulation Resistance:1000MΩ Min
 Operation Temperature:-40°C to +105°C

Contact Material:Brass
 Contact Plating:Au or Sn Over Ni
 Insulator Material:Polyester(UL94V-0)
 Standard: LCP
 Max.Processing Temp: 230°C for 30-60 seconds
 (260°C for 10 seconds)



Recommended P.C.B Layout(Top Side)
 (PCB BOARD TOLERANCE±0.05)



Dimension antitheses list				
ITEM	PA	A	PC	L
Standard	3.20	1.70	4.60	11.2
Alternate				

OPERATION	DRAW	YiYuSheng	17.03.18	SCALE	FIT
X.X ±0.30	CHECK			UNIT	mm
X.XX ±0.20				SIZE	A4
X.XXX ±0.10				SHEET	1/1
Angle ±3°	APPROVE			PROJ.	☼
DIM TOL					

KLS ELECTRONIC CO., LTD

REV	DATE	MODIFICATION DESCRIPTION	CHANGE
A0	2017.03.18	NEW DRAWING	

PART NO.	L-KLS1-207CA-3.0-1-11-T3-R
TITLE:	1.27PH H3.0mm 1xNpin 90° SMT