

 FUZETEC TECHNOLOGY CO., LTD.	NO.	PQ35-101E		
	Product Specification and Approval Sheet	Version	A6	Page

Surface Mountable PTC Resettable Fuse: FSMD0603 Series

1. Summary

- (a) **RoHS Compliant & Halogen Free**
- (b) **Applications: All high-density boards**
- (c) **Product Features: Small surface mountable, Solid state, Faster time to trip than standard SMD devices, Lower resistance than standard SMD devices**
- (d) **Operation Current: 0.01A~0.25A**
- (e) **Maximum Voltage: 9V~60VDC**
- (f) **Temperature Range : -40°C to 85°C**

2. Agency Recognition

UL: File No. E211981
C-UL: File No. E211981
TÜV: File No. R50090556

3. Electrical Characteristics (23°C)

Part Number	Hold Current	Trip Current	Rated Voltage	Max Current	Typical Power	Max Time to Trip		Resistance	
						Current	Time	R _{MIN}	R _{1MAX}
	I _H , A	I _T , A	V _{MAX} , VDC	I _{MAX} , A	P _d , W	A	Sec	Ohms	Ohms
FSMD001-0603-R	0.01	0.03	60	40	0.5	0.20	1.00	15.00	100.00
FSMD002-0603-R	0.02	0.06	60	40	0.5	0.20	1.00	12.00	70.00
FSMD003-0603-R	0.03	0.09	30	40	0.5	0.20	1.00	6.00	50.00
FSMD004-0603-R	0.04	0.12	24	40	0.5	0.20	1.00	4.00	40.00
FSMD005-0603-R	0.05	0.15	15	40	0.5	0.50	0.10	3.80	30.00
FSMD008-0603-R	0.08	0.20	15	40	0.5	0.60	0.10	2.80	14.00
FSMD010-0603-R	0.10	0.25	15	40	0.5	0.70	0.10	0.90	8.00
FSMD012-0603-R	0.12	0.30	9	40	0.5	0.80	0.10	1.10	5.80
FSMD016-0603-R	0.16	0.40	9	40	0.5	1.00	0.10	1.00	4.20
FSMD020-0603-R	0.20	0.45	9	40	0.5	2.00	0.10	0.55	3.50
FSMD025-0603-R	0.25	0.55	9	40	0.5	8.00	0.08	0.50	3.00

I_H=Hold current-maximum current at which the device will not trip at 23°C still air.

I_T=Trip current-minimum current at which the device will always trip at 23°C still air.

V_{MAX}=Maximum voltage device can withstand without damage at it rated current.(I_{MAX})

I_{MAX}= Maximum fault current device can withstand without damage at rated voltage (V_{MAX}).

P_d=Typical power dissipated-type amount of power dissipated by the device when in the tripped state in 23°C still air environment.

R_{MIN}=Minimum device resistance at 23°C prior to tripping.

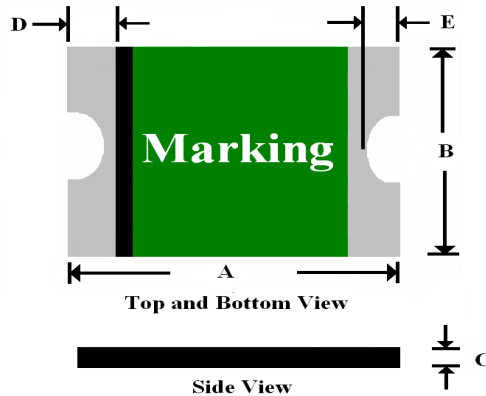
R_{1MAX}=Maximum device resistance at 23°C measured 1 hour after tripping or reflow soldering of 260°C for 20 seconds.

Termination pad characteristics

Termination pad materials: Pure Tin

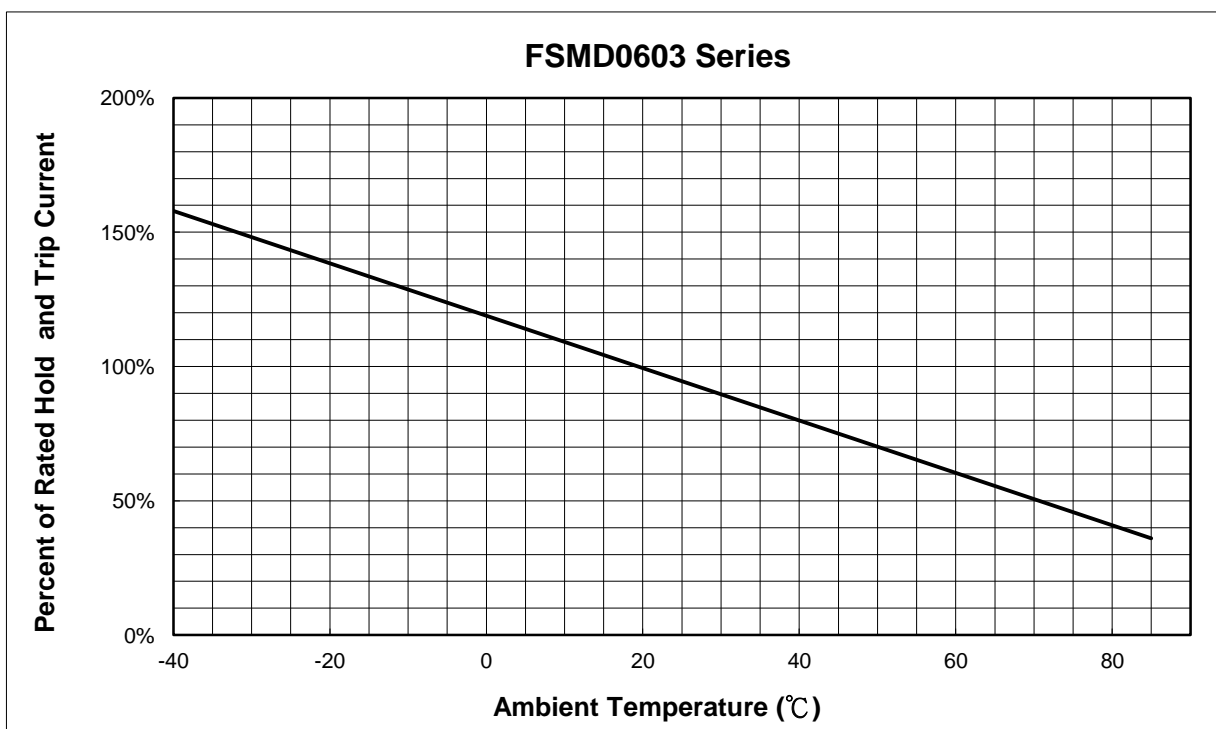


4. FSMD Product Dimensions (Millimeters)



Part Number	A		B		C		D		E	
	Min	Max	Min	Max	Min	Max	Min	Max	Min	Max
FSMD001-0603-R	1.40	1.80	0.45	1.00	0.35	0.85	0.10	0.50	0.08	0.40
FSMD002-0603-R	1.40	1.80	0.45	1.00	0.35	0.85	0.10	0.50	0.08	0.40
FSMD003-0603-R	1.40	1.80	0.45	1.00	0.35	0.75	0.10	0.50	0.08	0.40
FSMD004-0603-R	1.40	1.80	0.45	1.00	0.35	0.75	0.10	0.50	0.08	0.40
FSMD005-0603-R	1.40	1.80	0.45	1.00	0.35	0.75	0.10	0.50	0.08	0.40
FSMD008-0603-R	1.40	1.80	0.45	1.00	0.35	0.75	0.10	0.50	0.08	0.40
FSMD010-0603-R	1.40	1.80	0.45	1.00	0.35	0.75	0.10	0.50	0.08	0.40
FSMD012-0603-R	1.40	1.80	0.45	1.00	0.35	0.75	0.10	0.50	0.08	0.40
FSMD016-0603-R	1.40	1.80	0.45	1.00	0.35	0.75	0.10	0.50	0.08	0.40
FSMD020-0603-R	1.40	1.80	0.45	1.00	0.35	0.75	0.10	0.50	0.08	0.40
FSMD025-0603-R	1.40	1.80	0.45	1.00	0.35	0.75	0.10	0.50	0.08	0.40

5. Thermal Derating Curve

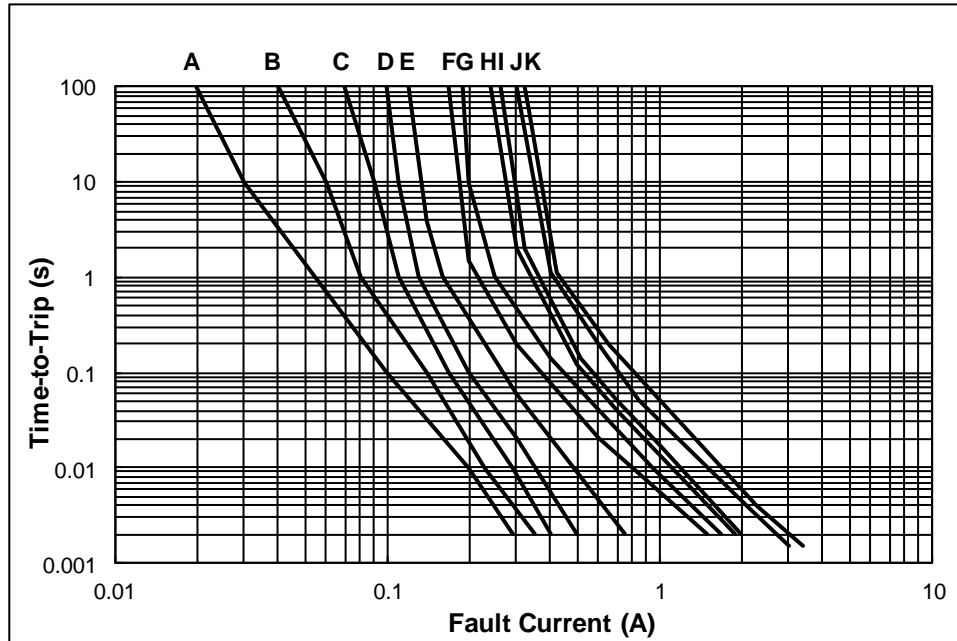


NOTE : Specification subject to change without notice.



6. Typical Time-To-Trip at 23°C

- A = FSMD001-0603-R
- B = FSMD002-0603-R
- C = FSMD003-0603-R
- D = FSMD004-0603-R
- E = FSMD005-0603-R
- F = FSMD008-0603-R
- G = FSMD010-0603-R
- H = FSMD012-0603-R
- I = FSMD016-0603-R
- J = FSMD020-0603-R
- K = FSMD025-0603-R



7. Material Specification

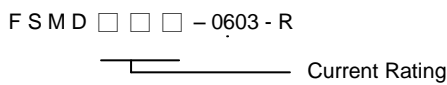
Terminal pad material: Pure Tin

Soldering characteristics: Meets EIA specification RS 186-9E, ANSI/J-std-002 Category 3

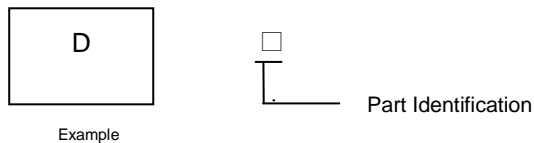
8. Part Numbering and Marking System

- X=FSMD001-0603-R
- Y=FSMD002-0603-R
- Z=FSMD003-0603-R
- A=FSMD004-0603-R
- B=FSMD005-0603-R
- C=FSMD008-0603-R
- D=FSMD010-0603-R
- E=FSMD012-0603-R
- F=FSMD016-0603-R
- G=FSMD020-0603-R
- V=FSMD025-0603-R

Part Numbering System



Part Marking System



Warning:

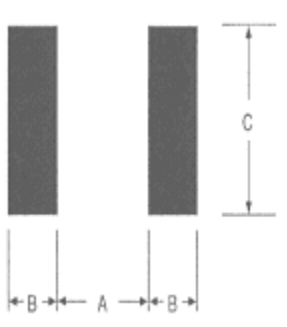
- Each product should be carefully evaluated and tested for their suitability of application.
- Operation beyond the specified maximum rating or improper use may result in damage and possible electrical arcing and/or flame.
- PPTC device are intended for occasional overcurrent protection. Application for repeated overcurrent condition and/or prolonged trip are not anticipated.
- Avoid contact of PPTC device with chemical solvent, including some inert material such as silicone based oil, lubricant and etc. Prolonged contact will damage the device performance.
- Additional protection mechanism are strongly recommended to be used in conjunction with the PPTC device for protection against abnormal or failure conditions.
- Avoid use of PPTC device in a constrained space such as potting material, housing and containers where have limited space to accommodate device thermal expansion and/or contraction.





9. Pad Layouts 、 Solder Reflow and Rework Recommendations

The dimension in the table below provide the recommended pad layout for each FSMD0603 device



Pad dimensions (millimeters)			
Device	A Nominal	B Nominal	C Nominal
FSMD0603 Series	0.80	0.60	0.80

Profile Feature	Pb-Free Assembly
Average Ramp-Up Rate (T_{smax} to T_p)	3 °C/second max.
Preheat :	
Temperature Min (T _{smin})	150 °C
Temperature Max (T _{smax})	200 °C
Time (t _{smin} to t _{smax})	60-180 seconds
Time maintained above:	
Temperature(T _L)	217 °C
Time (t _L)	60-150 seconds
Peak/Classification Temperature(T_p) :	260 °C
Time within 5°C of actual Peak :	
Temperature (t _p)	20-40 seconds
Ramp-Down Rate :	6 °C/second max.
Time 25 °C to Peak Temperature :	8 minutes max.

Solder reflow

※ Due to “Lead Free” nature, Temperature and Dwelling time for the soldering zone is higher than those for Regular. This may cause damage to other components.

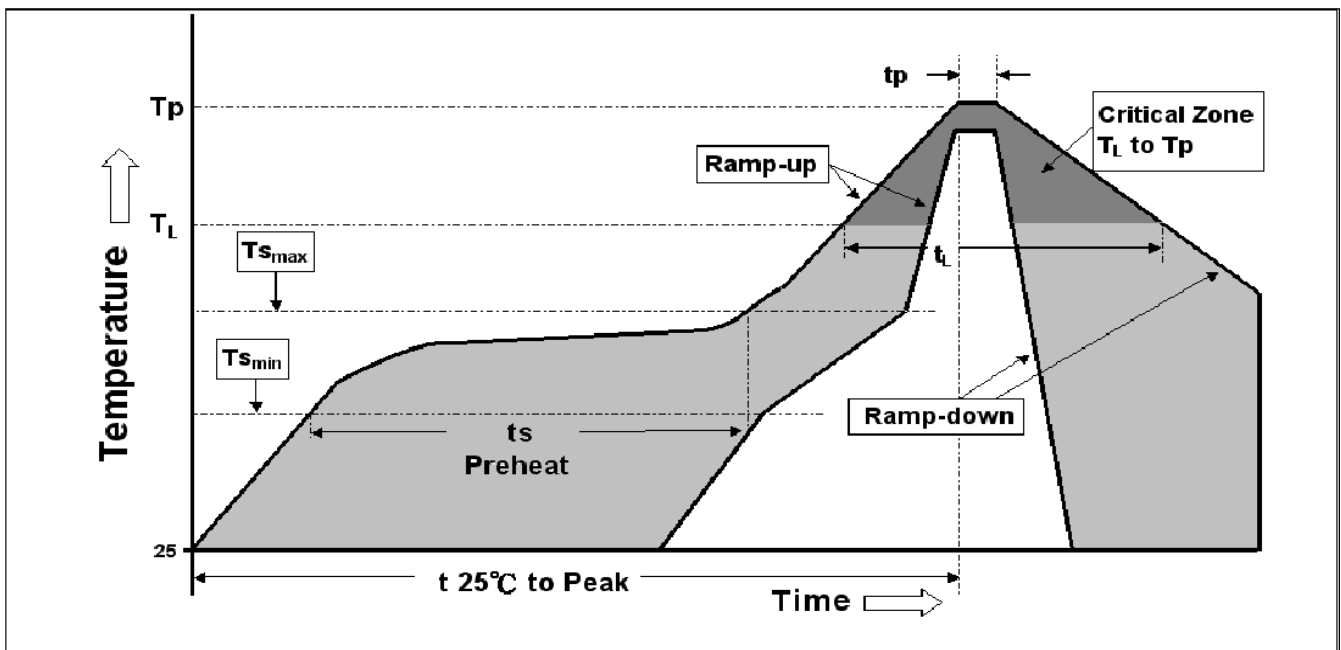
1. Recommended max paste thickness is 0.25mm.(Nominal)
2. Devices can be cleaned using standard methods and aqueous solvent.
3. Rework use standard industry practices.
4. Storage Environment : < 30°C / 60%RH

Caution:

1. If reflow temperatures exceed the recommended profile, devices may not meet the performance requirements.
2. Devices are not designed to be wave soldered to the bottom side of the board.

Note 1: All temperatures refer to of the package, measured on the package body surface.

Reflow Profile



NOTE : Specification subject to change without notice.