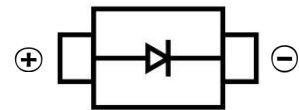


**SCHOTTKY BARRIER DIODE**
**FEATURES**

- Small Surface Mount device
- Low power loss, high efficiency
- High forward surge current capability
- For use in low voltage, high frequency inverters, free wheeling, and polarity protection applications


**SMA**

**MECHANICAL DATA**

- Case: SMA(DO-214AC)
- Case Material: Molded Plastic. UL flammability
- Classification Rating: 94V-0
- Moisture Sensitivity: Level 1 per J-STD-020
- Weight: 0.065 grams (approximate)

**MAXIMUM RATINGS AND CHARACTERISTICS(T<sub>A</sub> = 25°C unless otherwise noted)**

Parameter	Symbol	SS22	SS24	SS26	SS28	SS210	SS212	SS215	SS220	Unit
Repetitive peak reverse voltage	V <sub>RRM</sub>	20	40	60	80	100	120	150	200	V
DC Reverse Voltage	V <sub>R</sub>	20	40	60	80	100	120	150	200	V
RMS Reverse Voltage	V <sub>RMS</sub>	14	28	42	56	70	84	105	140	V
Non-Repetitive Peak Forward Surge Current @ t = 8.3 ms	I <sub>FSM</sub>	50				40				A
Mean rectifying current	I <sub>F</sub>	2.0								A
Thermal Resistance From Junction To Ambient	R <sub>θJA</sub>	85								°C/W
Junction Temperature	T <sub>J</sub>	125								°C
Storage Temperature	T <sub>STG</sub>	-55 ~+150								°C

**ELECTRICAL CHARACTERISTICS (T<sub>A</sub> = 25°C unless otherwise specified)**

Parameter	Symbol	SS22	SS24	SS26	SS28	SS210	SS212	SS215	SS220	Unit	Conditions
Forward voltage	V <sub>F</sub>	0.55	0.70		0.85		0.95			V	I <sub>F</sub> =2A
Reverse current T=25°C	I <sub>R</sub>	0.5			0.3					mA	V=V <sub>R</sub>
Reverse current T=100°C	I <sub>R</sub>	10			5					mA	
Junction capacitance	C <sub>J</sub>	220		80					µF	V <sub>R</sub> =4V, f=1MH	

SCHOTTKY BARRIER DIODE

Typical Characteristics

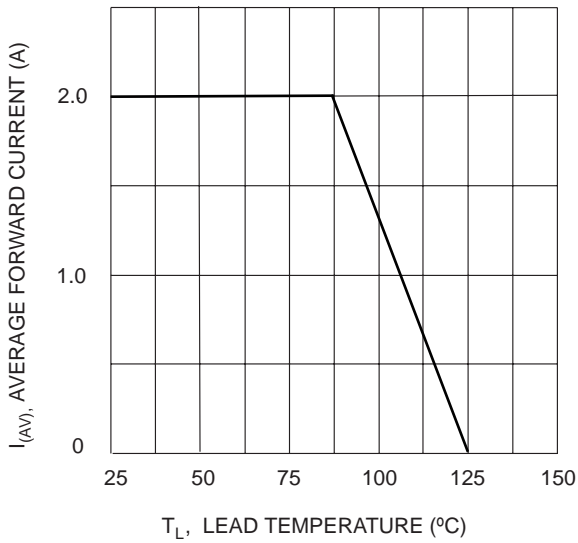


Fig. 1 Forward Current Derating Curve

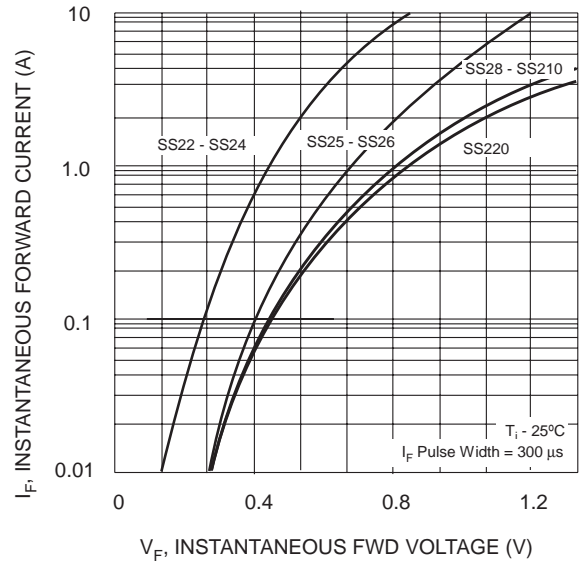


Fig. 2 Typ. Forward Characteristics

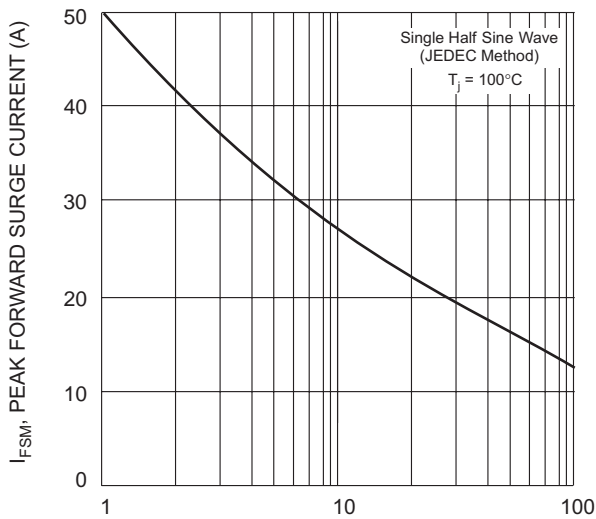


Fig. 3 Max Non Repetitive Peak Fwd Surge Current

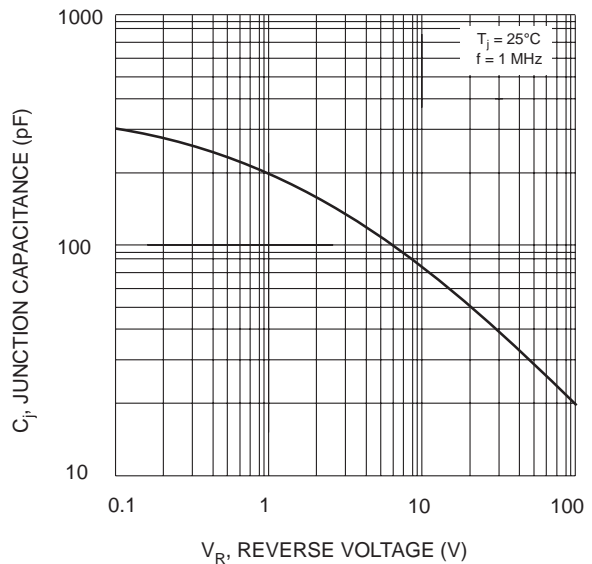


Fig. 4 Typical Junction Capacitance

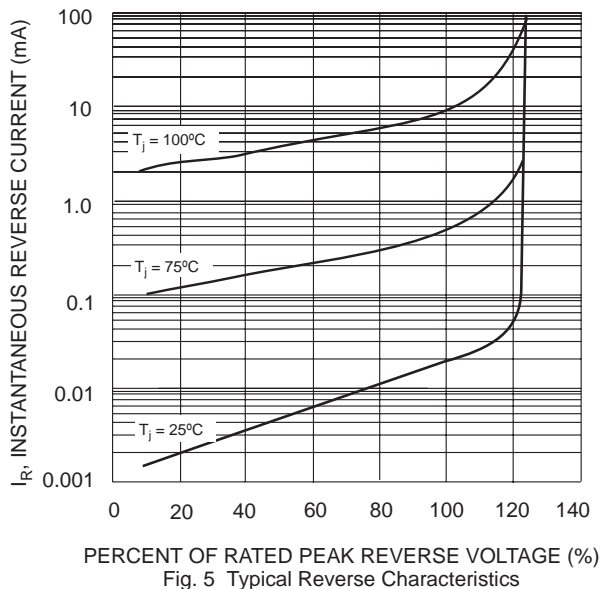
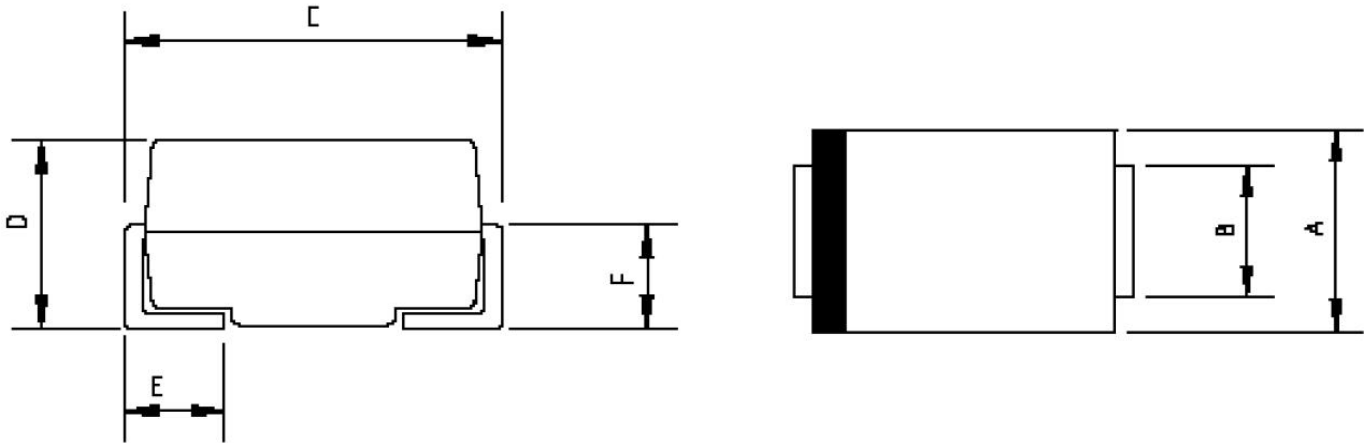


Fig. 5 Typical Reverse Characteristics

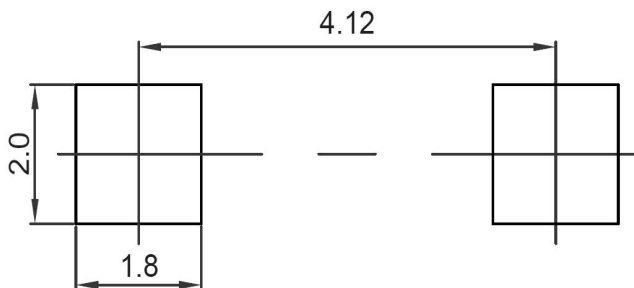
SCHOTTKY BARRIER DIODE

**SMA Package Outline Dimensions**



Symbol	Dimensions In Millimeters		Dimensions In Inches	
	Min.	Max.	Min.	Max.
A	2.20	2.80	0.086	0.110
B	1.30	1.70	0.051	0.067
C	4.70	5.30	0.185	0.209
D	1.70	2.55	0.067	0.100
E	0.90	1.50	0.035	0.059
F	0.90	1.50	0.035	0.059

**SMA Suggested Pad Layout**

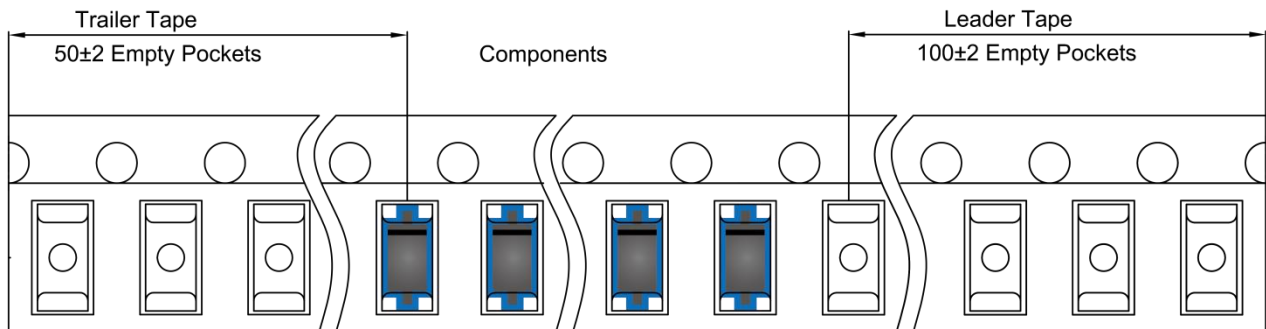
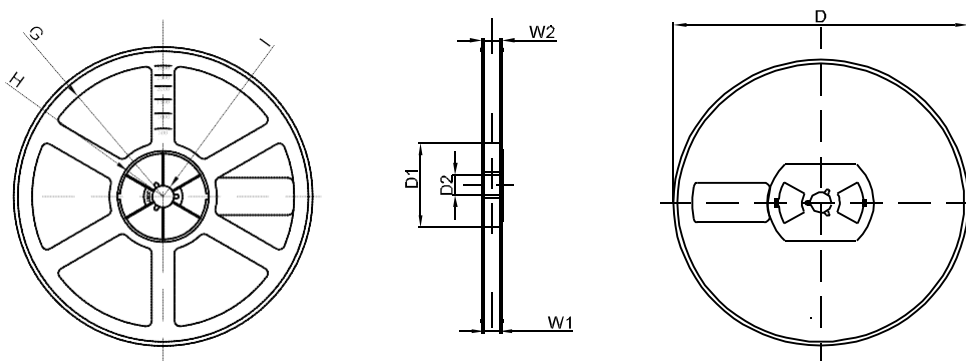


**Note:**

1. Controlling dimension: in millimeters
2. General tolerance:  $\pm 0.05$ mm
3. The pad layout is for reference purposes only

**SCHOTTKY BARRIER DIODE**
**SMA Tape and Reel**
**SMA Embossed Carrier Tape**


DIMENSIONS ARE IN MILLIMETER										
TYPE	A	B	C	d	E	F	P0	P	P1	W
SMA	2.89	5.35	2.68	Ø1.50	1.75	5.50	4.00	4.00	2.00	12.00
TOLERANCE	±0.1	±0.1	±0.1	±0.1	±0.1	±0.1	±0.1	±0.1	±0.1	±0.1

**SMA Tape Leader and Trailer**

**SMA Reel**


DIMENSIONS ARE IN MILLIMETER								
REEL OPTION	D	D1	D2	G	H	I	W1	W2
7" DIA	Ø178	54.40	13.00	R78	R25.60	R6.50	12.40	17.60
TOLERANCE	±2	±1	±1	±1	±1	±1	±1	±1