

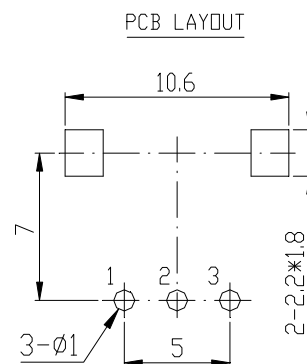
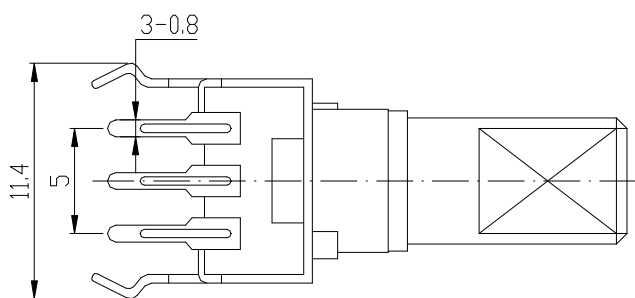
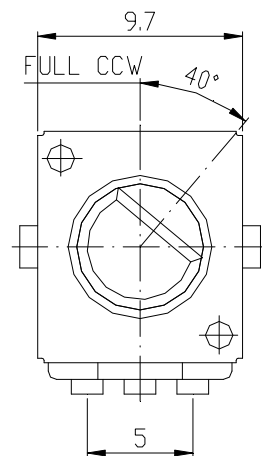
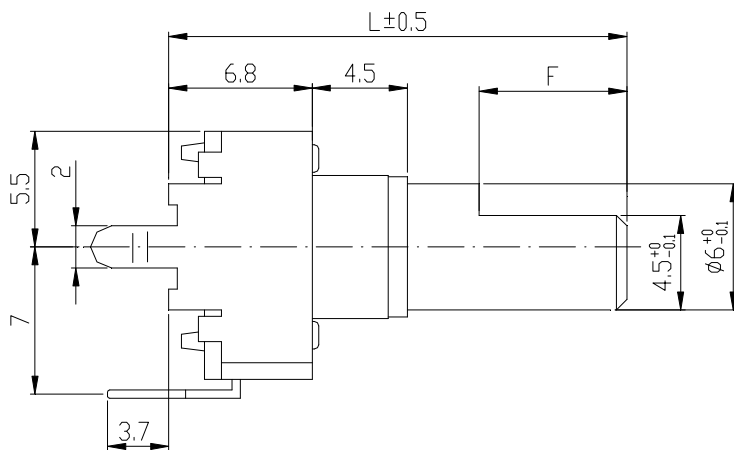
# KLS ELECTRONIC CO., LTD

## 9mm Snap-In Insulated Shaft Potentiometer

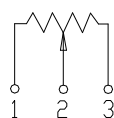


Part Number : L-KLS4-R0902N-B100K-L25-F

### Dimensions 規格尺寸



### CIRCUIT



# KLS ELECTRONIC CO., LTD

## 9mm Snap-In Insulated Shaft Potentiometer

### Shaft Type

KC Type				KS Type				KQ Type			
<b>L</b>	<b>15</b>	<b>20</b>	<b>25</b>	<b>L</b>	<b>15</b>	<b>20</b>	<b>25</b>	<b>L</b>	<b>15</b>	<b>20</b>	<b>25</b>
<b>A</b>	<b>7</b>	<b>7</b>	<b>7</b>	<b>A</b>	<b>7</b>	<b>7</b>	<b>7</b>	<b>A</b>	<b>6</b>	<b>7</b>	<b>7</b>

KT Type					F Type			
<b>L</b>	<b>9</b>	<b>15</b>	<b>20</b>	<b>25</b>	<b>L</b>	<b>15</b>	<b>20</b>	<b>25</b>
<b>A</b>	<b>--</b>	<b>6</b>	<b>7</b>	<b>7</b>	<b>F</b>	<b>6</b>	<b>7</b>	<b>12</b>

# KLS ELECTRONIC CO., LTD

## 9mm Snap-In Insulated Shaft Potentiometer

### General 一般事項

使用溫度範圍 Operating temperature	-10 °C ~ +70 °C
手工焊接 Manual soldering	300 °C Max 3sec

### Electrical Characteristics 電氣特性

總阻值(R) Total resistance	100 KΩ
總阻值容許誤差 Resistance tolerance	±20%
阻值線性 Resistance taper	B
摺動雜音 Sliding noise	Less than 80 mV
殘留阻值 Residual resistance	Term. 1~2 :Less than 20Ω Term. 2~3 :Less than 40Ω
絕緣阻抗 Insulation resistance	More than 100MΩ at DC 250V
定格電力 Rated power(W)	0.05W
最高使用電壓 Max. Operating voltage	AC 50V / DC 20V
耐電壓 Withstand voltage	1 Minute at AC 250 V

### Mechanical Characteristics 機械特性

全回轉角度 Total rotational angle	280° ± 10°
全回轉扭力 Rotational torque	30 ~ 150 gf.cm
全回轉止強度 Rotational stopper strength	3Kgf.cm Min
軸推拉強度 Shaft push-pull strength	4Kgf. Max
迴轉壽命 Rotational life	15,000 Cycles.

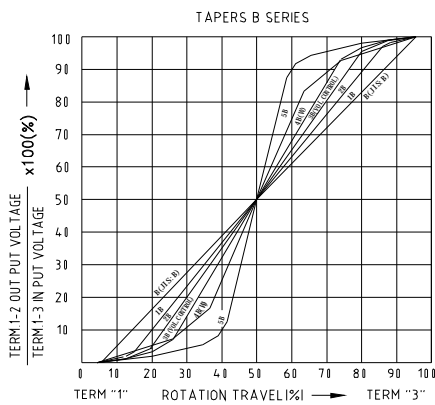
# KLS ELECTRONIC CO., LTD

## 线性图标准

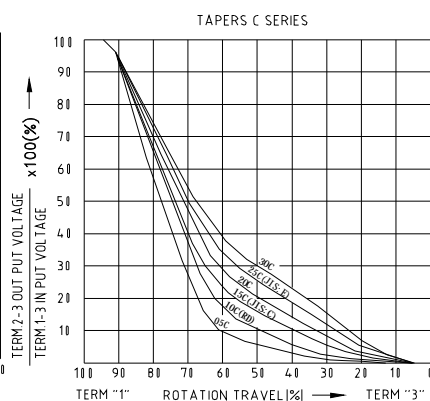
# Electrical Characteristics

## Resistance Taper Characteristics

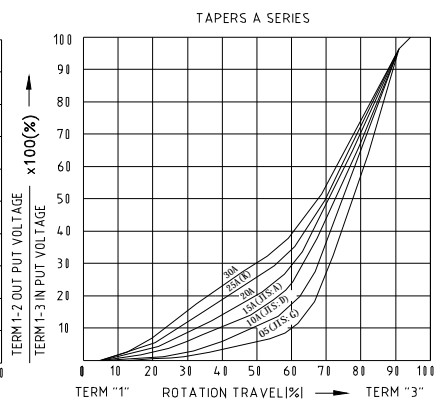
Resistance Taper Characteristic	Test Point Rotation (%)	$\frac{V_{1-2}}{V_{1-3}} \times 100$ (%)	$\frac{V_{2-3}}{V_{1-3}} \times 100$ (%)
A	60	15—30	——
B	50	40—60	——
C	60 (started from 3T)	——	15—30
D	50	2—15	——
E	50	——	15—35
M	30 (±5 degree)	5—15	——
	50	40—60	——
	70 (±5 degree)	85—95	——



0B  1B  2B  3B  4B  5B



05C  10C  15C  20C  25C  30C



05A  10A  15A  20A  25A  30A