

PCB Modular Jack Series

KLS12-127-6P PCB Modular Jack 55 Series 1x2 Ports

MATERIAL

- 1.Housing Material : Glass Filled Polyester UL94V-0 PBT, NYLON
- 2.Housing Color : Black, Gray, Ivory, White or others
- 3.Contact Material : Phosphor Bronze $\Phi 0.46\text{mm}$
- 4.PLATING: Gold plating over nickel. Gold plating thickness
1.5u"/3u"/6u"/15u"/30u"/50u"

ELECTRICAL

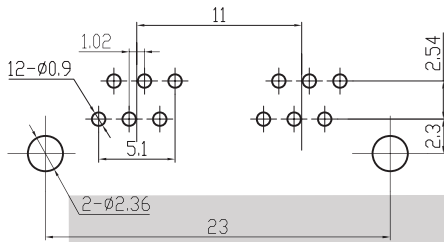
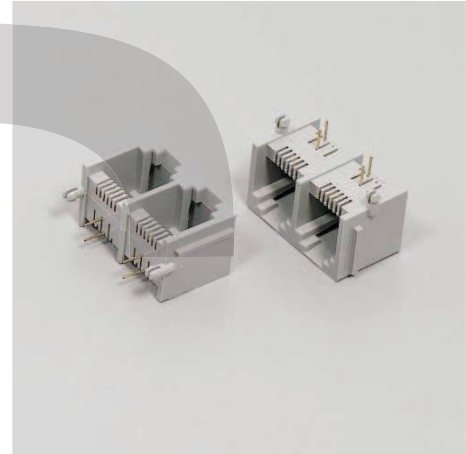
- 1.Current Rating:1.5Amp
- 2.Voltage Rating:125VAC
- 3.Contact Resistance : 30M Ω Max.
- 4.Insulation Resistance : 500 M Ω Min @500VDC
- 5.Withstanding Voltage: 1000VAC RMS 50Hz 1 minute

MECHANICAL

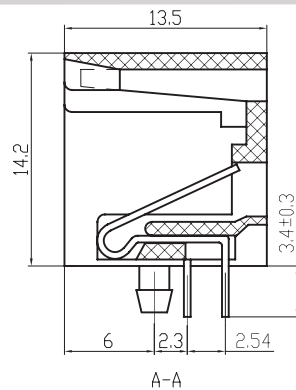
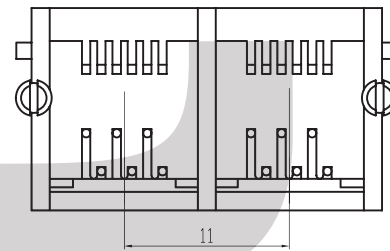
- 1.Durability : 750 cycles Min
- 2.PCB Retention pre-solder : 1 LB Min

ENVIRONMENTAL

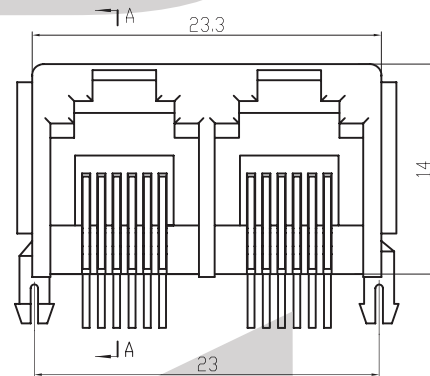
- 1.Storage :-40°C~+80°C
- 2.Operation:-40°C~+70°C



PC Board Layout



A-A



ORDER INFORMATION

KLS12-127 - 6P6C-1x2-W-B-XX-X

Part Number	Point NO.	Ports	Panel	Part Color	Gold Thickness	Plastic
6P6C	Point	1x2-2 Ports	W-With Panel	1-Black	01-Fu"	1-Nylon
6P4C	Point	1x3-3 Ports	W/O-Without Panel	2-Gray	02-3u"	2-PBT
6P2C	Point	1x4-4 Ports		3-White	03-6u"	3-ABS
		1x5-4 Ports		4-IV	04-15u"	
		1x6-6 Ports			05-30u"	
		1x8-8 Ports			06-50u"	

PCB Modular Jack Series

KLS12-127-6P PCB Modular Jack 55 Series 1x3 Ports

MATERIAL

- 1.Housing Material : Glass Filled Polyester UL94V-0 PBT, NYLON
- 2.Housing Color : Black, Gray, Ivory, White or others
- 3.Contact Material : Phosphor Bronze $\Phi 0.46\text{mm}$
- 4.PLATING: Gold plating over nickel. Gold plating thickness
1.5u" / 3u" / 6u" / 15u" / 30u" / 50u"

ELECTRICAL

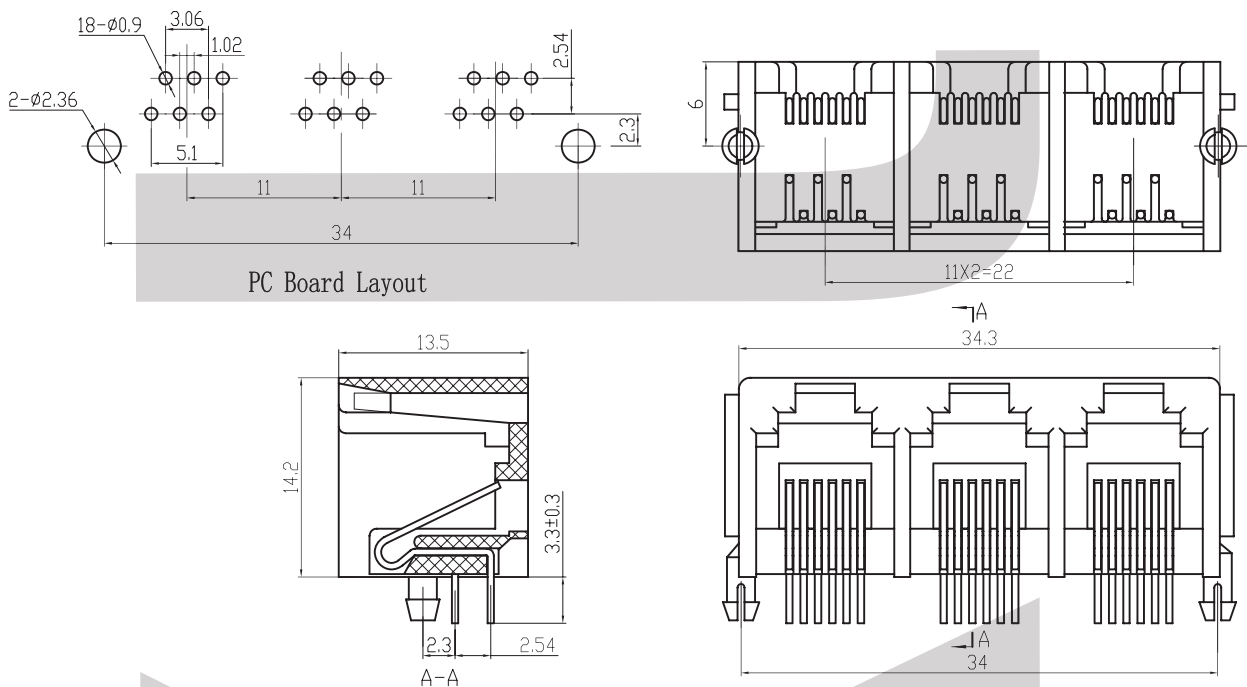
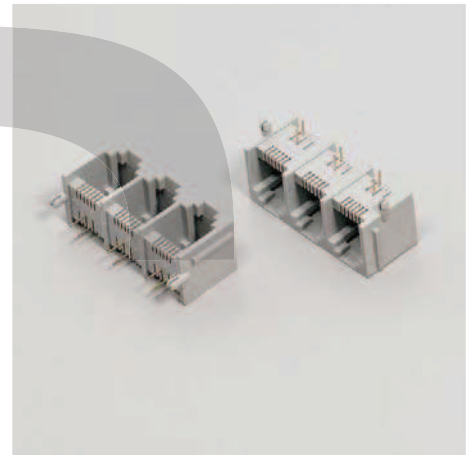
- 1.Current Rating:1.5Amp
- 2.Voltage Rating:125VAC
- 3.Contact Resistance : 30M Ω Max.
- 4.Insulation Resistance : 500 M Ω Min @500VDC
- 5.Withstanding Voltage: 1000VAC RMS 50Hz 1 minute

MECHANICAL

- 1.Durability : 750 cycles Min
- 2.PCB Retention pre-solder : 1 LB Min

ENVIRONMENTAL

- 1.Storage :-40°C~+80°C
- 2.Operation:-40°C~+70°C



ORDER INFORMATION

KLS12-127 - 6P6C-1x3-W-B-XX-X

Part Number	Point NO.	Ports	Panel	Part Color	Gold Thickness	Plastic
6P6C	Point	1x2-2 Ports	W-With Panel	1-Black	01-Fu"	1-Nylon
6P4C	Point	1x3-3 Ports	W/O-Without Panel	2-Gray	02-3u"	2-PBT
6P2C	Point	1x4-4 Ports		3-White	03-6u"	3-ABS
		1x5-4 Ports		4-IV	04-15u"	
		1x6-6 Ports			05-30u"	
		1x8-8 Ports			06-50u"	

PCB Modular Jack Series

KLS12-127-6P PCB Modular Jack 55 Series 1x4 Ports

MATERIAL

- 1.Housing Material : Glass Filled Polyester UL94V-0 PBT, NYLON
- 2.Housing Color : Black, Gray, Ivory, White or others
- 3.Contact Material : Phosphor Bronze $\Phi 0.46\text{mm}$
- 4.PLATING: Gold plating over nickel. Gold plating thickness
1.5u"/3u"/6u"/15u"/30u"/50u"

ELECTRICAL

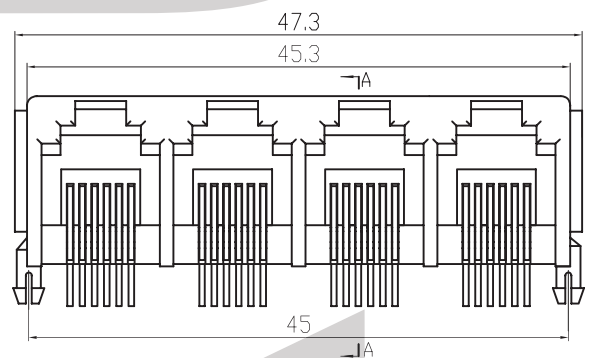
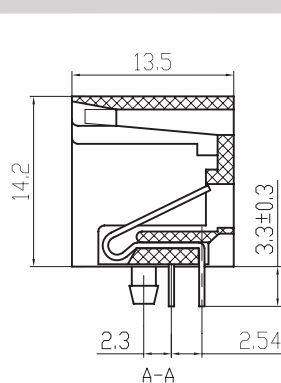
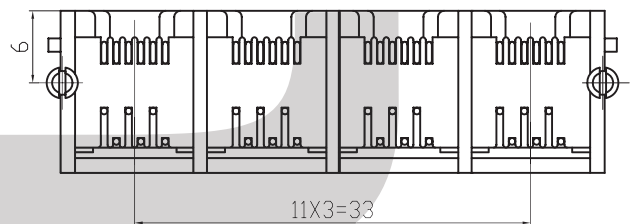
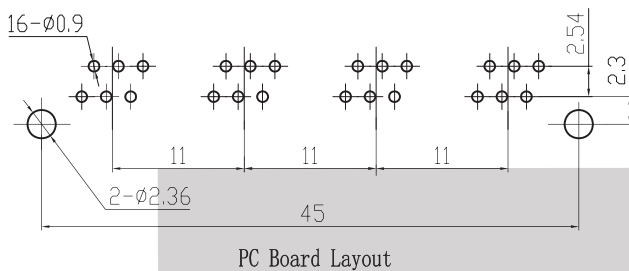
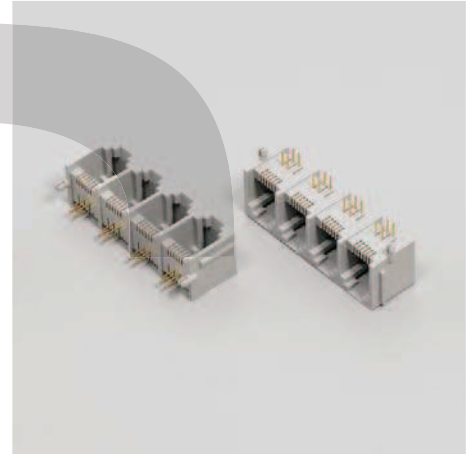
- 1.Current Rating:1.5Amp
- 2.Voltage Rating:125VAC
- 3.Contact Resistance : 30M Ω Max.
- 4.Insulation Resistance : 500 M Ω Min @500VDC
- 5.Withstanding Voltage: 1000VAC RMS 50Hz 1 minute

MECHANICAL

- 1.Durability : 750 cycles Min
- 2.PCB Retention pre-solder : 1 LB Min

ENVIRONMENTAL

- 1.Storage :-40°C~+80°C
- 2.Operation:-40°C~+70°C



ORDER INFORMATION

KLS12-127 - 6P6C-1x4-W-B-XX-X

Part Number	Point NO.	Ports	Panel	Part Color	Gold Thickness	Plastic
6P6C	Point	1x2-2 Ports	W-With Panel	1-Black	01-Fu"	1-Nylon
6P4C	Point	1x3-3 Ports	W/O-Without Panel	2-Gray	02-3u"	2-PBT
6P2C	Point	1x4-4 Ports		3-White	03-6u"	3-ABS
		1x5-4 Ports		4-IV	04-15u"	
		1x6-6 Ports			05-30u"	
		1x8-8 Ports			06-50u"	

PCB Modular Jack Series

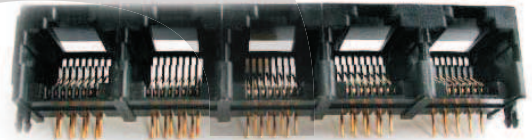
KLS12-127-6P PCB Modular Jack 55 Series 1x5 Ports

MATERIAL

- 1.Housing Material : Glass Filled Polyester UL94V-0 PBT, NYLON
- 2.Housing Color : Black, Gray, Ivory, White or others
- 3.Contact Material : Phosphor Bronze $\Phi 0.46\text{mm}$
- 4.PLATING: Gold plating over nickel. Gold plating thickness
1.5u"/3u"/6u"/15u"/30u"/50u"

ELECTRICAL

- 1.Current Rating:1.5Amp
- 2.Voltage Rating:125VAC
- 3.Contact Resistance : 30M Ω Max.
- 4.Insulation Resistance : 500 M Ω Min @500VDC
- 5.Withstanding Voltage: 1000VAC RMS 50Hz 1 minute

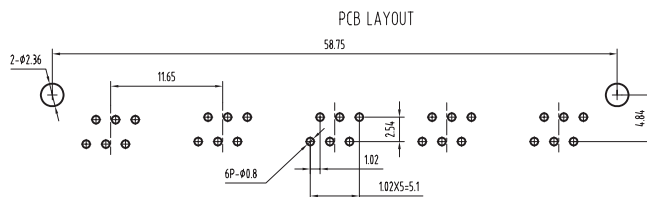
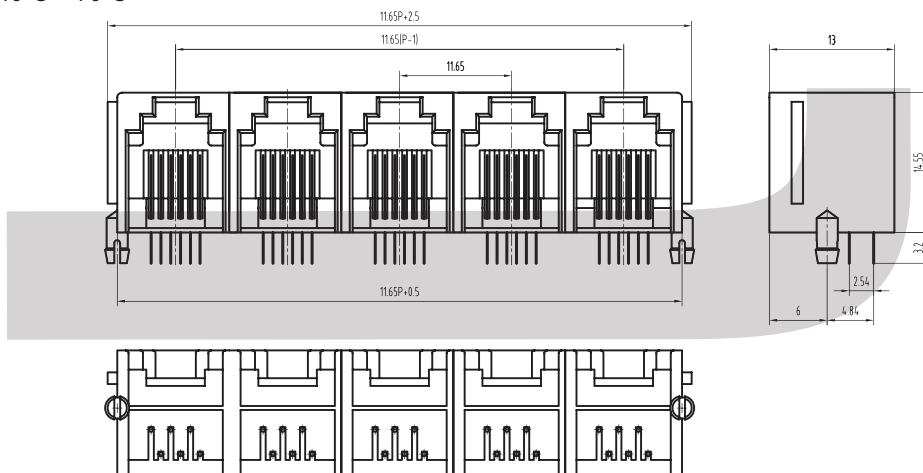


MECHANICAL

- 1.Durability : 750 cycles Min
- 2.PCB Retention pre-solder : 1 LB Min

ENVIRONMENTAL

- 1.Storage :-40°C~+80°C
- 2.Operation:-40°C~+70°C



ORDER INFORMATION

KLS12-127 - 6P6C-1x5-W-B-XX-X

Part Number	Point NO.	Ports	Panel	Part Color	Gold Thickness	Plastic
6P6C	Point	1x2-2 Ports	W-With Panel	1-Black	01-Fu"	1-Nylon
6P4C	Point	1x3-3 Ports	W/O-Without Panel	2-Gray	02-3u"	2-PBT
6P2C	Point	1x4-4 Ports		3-White	03-6u"	3-ABS
		1x5-4 Ports		4-IV	04-15u"	
		1x6-6 Ports			05-30u"	
		1x8-8 Ports			06-50u"	

PCB Modular Jack Series

KLS12-127-6P PCB Modular Jack 55 Series 1x6 Ports

MATERIAL

- 1.Housing Material : Glass Filled Polyester UL94V-0 PBT, NYLON
- 2.Housing Color : Black, Gray, Ivory, White or others
- 3.Contact Material : Phosphor Bronze $\Phi 0.46\text{mm}$
- 4.PLATING: Gold plating over nickel. Gold plating thickness
1.5u"/3u"/6u"/15u"/30u"/50u"

ELECTRICAL

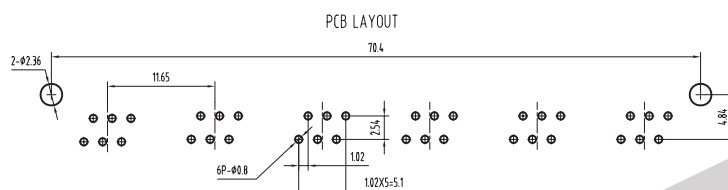
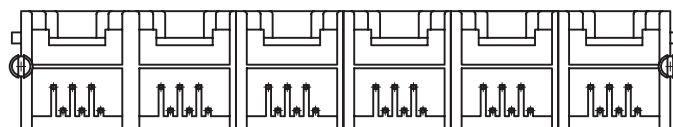
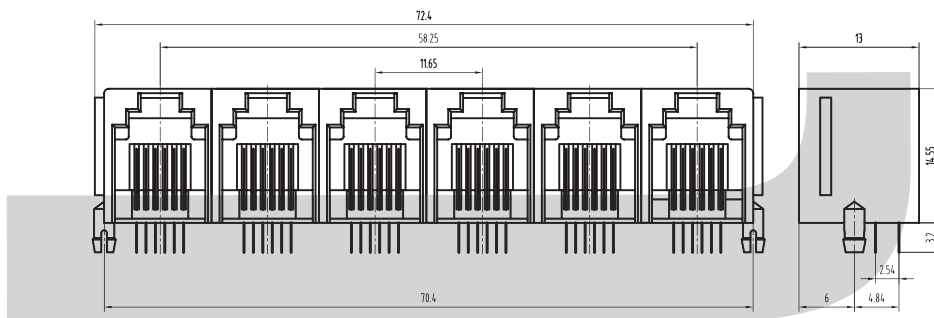
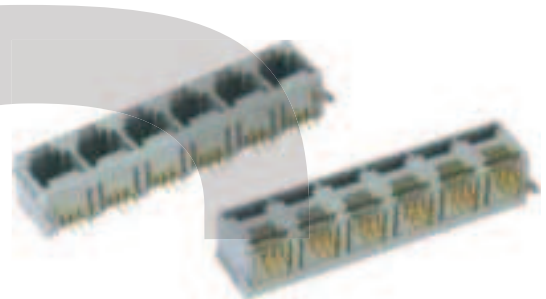
- 1.Current Rating:1.5Amp
- 2.Voltage Rating:125VAC
- 3.Contact Resistance : 30M Ω Max.
- 4.Insulation Resistance : 500 M Ω Min @500VDC
- 5.Withstanding Voltage: 1000VAC RMS 50Hz 1 minute

MECHANICAL

- 1.Durability : 750 cycles Min
- 2.PCB Retention pre-solder : 1 LB Min

ENVIRONMENTAL

- 1.Storage :-40°C~+80°C
- 2.Operation:-40°C~+70°C



ORDER INFORMATION

KLS12-127 - 6P6C-1x6-W-B-XX-X

Part Number	Point NO.	Ports	Panel	Part Color	Gold Thickness	Plastic
6P6C	Point	1x2-2 Ports	W-With Panel	1-Black	01-Fu"	1-Nylon
6P4C	Point	1x3-3 Ports	W/O-Without Panel	2-Gray	02-3u"	2-PBT
6P2C	Point	1x4-4 Ports		3-White	03-6u"	3-ABS
		1x5-4 Ports		4-IV	04-15u"	
		1x6-6 Ports			05-30u"	
		1x8-8 Ports			06-50u"	

PCB Modular Jack Series

KLS12-127-6P PCB Modular Jack 55 Series 1x8 Ports

MATERIAL

- 1.Housing Material : Glass Filled Polyester UL94V-0 PBT, NYLON
- 2.Housing Color : Black, Gray, Ivory, White or others
- 3.Contact Material : Phosphor Bronze $\Phi 0.46\text{mm}$
- 4.PLATING: Gold plating over nickel. Gold plating thickness
1.5u"/3u"/6u"/15u"/30u"/50u"

ELECTRICAL

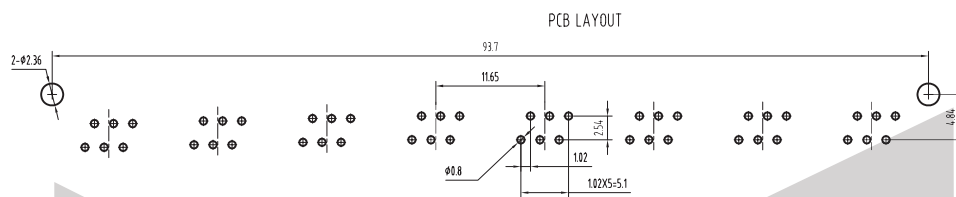
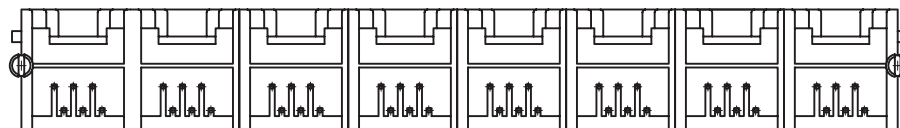
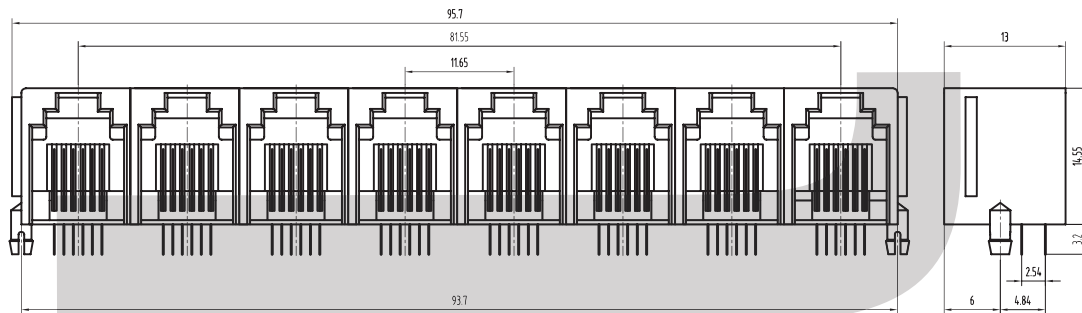
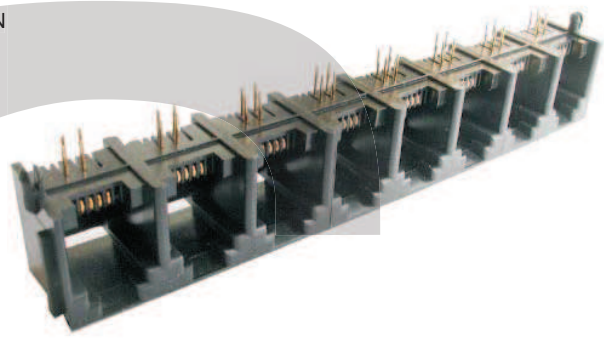
- 1.Current Rating:1.5Amp
- 2.Voltage Rating:125VAC
- 3.Contact Resistance : 30M Ω Max.
- 4.Insulation Resistance : 500 M Ω Min @500VDC
- 5.Withstanding Voltage: 1000VAC RMS 50Hz 1 minute

MECHANICAL

- 1.Durability : 750 cycles Min
- 2.PCB Retention pre-solder : 1 LB Min

ENVIRONMENTAL

- 1.Storage :-40°C~+80°C
- 2.Operation:-40°C~+70°C



ORDER INFORMATION

KLS12-127 - 6P6C-1x8-W-B-XX-X

Part Number	Point NO.	Ports	Panel	Part Color	Gold Thickness	Plastic
6P6C	Point	1x2-2 Ports	W-With Panel	1-Black	01-Fu"	1-Nylon
6P4C	Point	1x3-3 Ports	W/O-Without Panel	2-Gray	02-3u"	2-PBT
6P2C	Point	1x4-4 Ports		3-White	03-6u"	3-ABS
		1x5-4 Ports		4-IV	04-15u"	
		1x6-6 Ports			05-30u"	
		1x8-8 Ports			06-50u"	