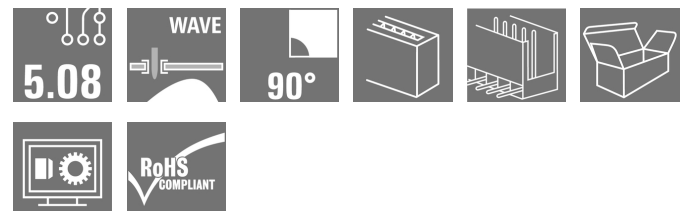


OMNIMATE Signal - series BL/SL 5.08
SL 5.08/07/90 3.2SN OR BX

Weidmüller Interface GmbH & Co. KG
 Klingenbergstraße 16
 D-32758 Detmold
 Germany
 Fon: +49 5231 14-0
 Fax: +49 5231 14-292083
 www.weidmueller.com



Similar to illustration

Male connectors with 90° outlet direction. The solder pin length is optimised for wave flow soldering. The pin headers provide space for labelling and can be coded.

General ordering data

| | |
|---------------------|---|
| Delivery status | This article will no longer be available in the future. |
| Available until | 2019-12-31 |
| Type | SL 5.08/07/90 3.2SN OR BX |
| Order No. | 1508560000 |
| Version | PCB plug-in connector, male header, open side, THT solder connection, 5.08 mm, No. of poles: 7, 90°, Solder pin length (l): 3.2 mm, tinned, orange, Box |
| GTIN (EAN) | 4008190097257 |
| Qty. | 50 pc(s). |
| Product data | IEC: 400 V / 18 A UL: 300 V / 15 A |
| Packaging | Box |
| Alternative product | 1146830000 |

**OMNIMATE Signal - series BL/SL 5.08
SL 5.08/07/90 3.2SN OR BX**

Weidmüller Interface GmbH & Co. KG
Klingenbergstraße 16
D-32758 Detmold
Germany
Fon: +49 5231 14-0
Fax: +49 5231 14-292083
www.weidmueller.com

Technical data**Dimensions and weights**

| | | | |
|--------------------------|------------|-----------------|------------|
| Width | 35.56 mm | Width (inches) | 1.4 inch |
| Height | 11.6 mm | Height (inches) | 0.457 inch |
| Height of lowest version | 8.4 mm | Depth | 12 mm |
| Depth (inches) | 0.472 inch | Net weight | 2.17 g |

System specifications

| | | | |
|---|-------------------------------------|--|---------------------------------|
| Product family | OMNIMATE Signal - series BL/SL 5.08 | Type of connection | Board connection |
| Mounting onto the PCB | THT solder connection | Pitch in mm (P) | 5.08 mm |
| Pitch in inches (P) | 0.2 inch | Outgoing elbow | 90° |
| No. of poles | 7 | Number of solder pins per pole | 1 |
| Solder pin length (l) | 3.2 mm | Solder pin length tolerance | +0.1 / -0.3 mm |
| Tolerance of solder pin position | ± 0.1 mm | Solder pin dimensions | d = 1.2 mm, Octagonal |
| Solder pin dimensions = d tolerance | 0 / -0.03 mm | Solder eyelet hole diameter (D) | 1.3 mm |
| Solder eyelet hole diameter tolerance (D)+ 0,1 mm | | L1 in mm | 30.48 mm |
| L1 in inches | 1.2 inch | Number of rows | 1 |
| Pin series quantity | 1 | Touch-safe protection acc. to DIN VDE 57 106 | Safe from finger touch, plugged |
| Touch-safe protection acc. to DIN VDE 0470 | IP20 plugged | Volume resistance | 4.50 mΩ |
| Can be coded | Yes | Plugging cycles | 25 |

Material data

| | | | |
|---------------------------------------|----------------------------|---------------------------------------|----------------------------|
| Insulating material | PBT | Colour code | orange |
| Colour chart (similar) | RAL 2000 | Insulating material group | IIIa |
| CTI | ≥ 200 | Insulation strength | ≥ 10 ⁸ Ω |
| UL 94 flammability rating | V-0 | GWFI | 960 °C |
| Contact material | CuSn | Contact surface | tinned |
| Layer structure of solder connection | 1-3 µm Ni / 2-4 µm Sn matt | Layer structure of plug contact | 1-3 µm Ni / 2-4 µm Sn matt |
| Storage temperature, min. | -25 °C | Storage temperature, max. | 55 °C |
| Max. relative humidity during storage | 80 % | Operating temperature, min. | -50 °C |
| Operating temperature, max. | 100 °C | Temperature range, installation, min. | -25 °C |
| Temperature range, installation, max. | 100 °C | | |

Rated data acc. to IEC

| | | | |
|---|------------------------|---|-------------------|
| tested acc. to standard | IEC 60664-1, IEC 61984 | Rated current, min. no. of poles (Tu=20°C) | 18 A |
| Rated current, max. no. of poles (Tu=20°C) | 14.5 A | Rated current, min. no. of poles (Tu=40°C) | 15 A |
| Rated current, max. no. of poles (Tu=40°C) | 12 A | Rated voltage for surge voltage class / pollution degree II/2 | 400 V |
| Rated voltage for surge voltage class / pollution degree III/2 | 320 V | Rated voltage for surge voltage class / pollution degree III/3 | 250 V |
| Rated impulse voltage for surge voltage class/ pollution degree II/2 | 4 kV | Rated impulse voltage for surge voltage class/ pollution degree III/2 | 4 kV |
| Rated impulse voltage for surge voltage class/ contamination degree III/3 | 4 kV | Short-time withstand current resistance | 3 x 1s with 120 A |

OMNIMATE Signal - series BL/SL 5.08 SL 5.08/07/90 3.2SN OR BX

Weidmüller Interface GmbH & Co. KG
Klingenbergstraße 16
D-32758 Detmold
Germany
Fon: +49 5231 14-0
Fax: +49 5231 14-292083
www.weidmueller.com

Technical data

Rated data acc. to CSA

| | | | |
|-----------------------------------|---|-----------------------------------|----------------|
| Institute (CSA) |  | Certificate No. (CSA) | 200039-1121690 |
| Rated voltage (Use group B / CSA) | 300 V | Rated voltage (Use group D / CSA) | 300 V |
| Rated current (Use group B / CSA) | 15 A | Rated current (Use group D / CSA) | 10 A |
| Reference to approval values | Specifications are maximum values, details - see approval certificate. | | |

Rated data acc. to UL 1059

| | | | |
|---------------------------------------|---|---------------------------------------|--------|
| Institute (UR) |  | Certificate No. (UR) | E60693 |
| Rated voltage (Use group B / UL 1059) | 300 V | Rated voltage (Use group D / UL 1059) | 300 V |
| Rated current (Use group B / UL 1059) | 15 A | Rated current (Use group D / UL 1059) | 10 A |
| Reference to approval values | Specifications are maximum values, details - see approval certificate. | | |

Packaging

| | | | |
|-----------|-------|------------|--------|
| Packaging | Box | VPE length | 34 mm |
| VPE width | 99 mm | VPE height | 181 mm |

Classifications

| | | | |
|------------|-------------|------------|-------------|
| ETIM 3.0 | EC001284 | ETIM 4.0 | EC002637 |
| ETIM 5.0 | EC002637 | ETIM 6.0 | EC002637 |
| UNSPSC | 30-21-18-10 | eClass 5.1 | 27-26-07-04 |
| eClass 6.2 | 27-26-07-04 | eClass 7.1 | 27-44-04-02 |
| eClass 8.1 | 27-44-04-02 | eClass 9.0 | 27-44-04-02 |
| eClass 9.1 | 27-44-04-02 | | |

Notes

| | |
|----------------|--|
| Notes | <ul style="list-style-type: none"> • Additional colours on request • Gold-plated contact surfaces on request • Rated current related to rated cross-section & min. No. of poles. • P on drawing = pitch • Rated data refer only to the component itself. Clearance and creepage distances to other components are to be designed in accordance with the relevant application standards. |
| IPC conformity | Conformity: The products are developed, manufactured and delivered according international recognized standards and norms and comply with the assured properties in the data sheet resp. fulfill decorative properties in accordance with IPC-A-610 "Class 2". Further claims on the products can be evaluated on request. |

Data sheet

**OMNIMATE Signal - series BL/SL 5.08
SL 5.08/07/90 3.2SN OR BX**

Weidmüller Interface GmbH & Co. KG
Klingenbergstraße 16
D-32758 Detmold
Germany
Fon: +49 5231 14-0
Fax: +49 5231 14-292083
www.weidmueller.com

Technical data

Approvals

Approvals



ROHS

Conform

Downloads

Approval/Certificate/Document of
Conformity

[Declaration of the Manufacturer](#)

Brochure/Catalogue

- [FL DRIVES EN](#)
- [MB DEVICE MANUF. EN](#)
- [FL DRIVES DE](#)
- [FL BUILDING SAFETY EN](#)
- [FL APPL LED LIGHTING EN](#)
- [FLIndustr.CONTROLS EN](#)
- [FL MACHINE SAFETY EN](#)
- [FL HEATING ELECTR EN](#)
- [FL APPL INVERTER EN](#)
- [FL_BASE_STATION EN](#)
- [FL ELEVATOR EN](#)
- [FL POWER SUPPLY EN](#)
- [FL 72H SAMPLE SER EN](#)
- [PO OMNIMATE EN](#)

Engineering Data

[WSCAD](#)

Engineering Data

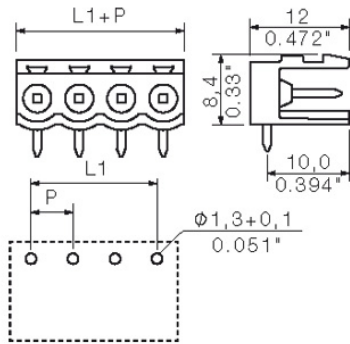
[SL.zip](#)

**OMNIMATE Signal - series BL/SL 5.08
SL 5.08/07/90 3.2SN OR BX**

Weidmüller Interface GmbH & Co. KG
 Klingenbergstraße 16
 D-32758 Detmold
 Germany
 Fon: +49 5231 14-0
 Fax: +49 5231 14-292083
 www.weidmueller.com

Drawings

Dimensional drawing



**OMNIMATE Signal - series BL/SL 5.08
SL 5.08/07/90 3.2SN OR BX**

Weidmüller Interface GmbH & Co. KG
Klingenbergstraße 16
D-32758 Detmold
Germany
Fon: +49 5231 14-0
Fax: +49 5231 14-292083
www.weidmueller.com

Mating connector (fully pluggable)
BLZP 5.08HC/180 SN


Female plug with clamping-yoke screw system for connecting wires with straight (180°) outlet direction. The female connectors provide space for labelling and can be coded. Fastened by means of a flange or release latch. They also provide an integrated plus/minus screw, protection against faulty insertion of the wire, and they are delivered with open clamping yokes. HC = High Current.

General ordering data

| Type | Order No. | Version | GTIN (EAN) | Qty. | Product data | Packaging |
|-----------------------------------|----------------------------|---|-----------------|-----------|---|-----------|
| BLZP 5.08HC/07/180 SN BK BX | 1943860000 | PCB plug-in connector, female plug, 5.08 mm, No. of poles: 7, 180°, Screw connection, Clamping range, max.: 4 mm ² , Box | 403224861790648 | 48 pc(s). | IEC: 400 V / 23 A / 0.2 - 4 mm ² UL: 300 V / 20 A / AWG 26 - AWG 12 | Box |
| BLZP 5.08HC/07/180 SN OR BX | 1943630000 | PCB plug-in connector, female plug, 5.08 mm, No. of poles: 7, 180°, Screw connection, Clamping range, max.: 4 mm ² , Box | 403224861763048 | 48 pc(s). | IEC: 400 V / 23 A / 0.2 - 4 mm ² UL: 300 V / 20 A / AWG 26 - AWG 12 | Box |

BLZP 5.08HC/225B SN


Clamping-yoke connection with right-angled (90° or 270°) or angled (225°) outlet direction. The female connectors provide space for labelling and can be coded. Fastened by means of a flange or release latch. They also provide an integrated plus/minus screw, protection against faulty insertion of the wire, and they are delivered with open clamping yokes. HC = High Current.

General ordering data

| Delivery status Available until | Type | Order No. | Version | GTIN (EAN) | Qty. | |
|--|---|----------------------------|--|---------------|---|-----|
| Discontinued 2016-04-08T00:00:00+02:00 | BLZP 5.08HC/07/225B SN BK BX | 1946030000 | PCB plug-in connector, female plug, 5.08 mm, No. of poles: 7, 225°, Screw connection, Clamping range, max.: 4 mm ² , Box | 4032248621569 | 48 pc(s). | |
| BLZP 5.08HC/07/225B SN OR BX | PCB plug-in connector, female plug, 5.08 mm, No. of poles: 7, 225°, Screw connection, Clamping range, max.: 4 mm ² , Box | 1945800000 | 403224862127948 | 48 pc(s). | IEC: 400 V / 17.5 A / 0.2 - 4 mm ² UL: 300 V / 15 A / AWG 26 - AWG 12 | Box |

**OMNIMATE Signal - series BL/SL 5.08
SL 5.08/07/90 3.2SN OR BX**

Weidmüller Interface GmbH & Co. KG
Klingenbergstraße 16
D-32758 Detmold
Germany
Fon: +49 5231 14-0
Fax: +49 5231 14-292083
www.weidmueller.com

Mating connector (fully pluggable)
BLZP 5.08HC/270 SN


Female plugs with clamping-yoke connection for connecting wires with a right-angle (90° or 270°) outlet direction. The female connectors provide space for labelling and can be coded. Fastened by means of a flange or release latch. They also provide an integrated plus/minus screw, protection against faulty insertion of the wire, and they are delivered with open clamping yokes. HC = High Current.

General ordering data

| Type | Order No. | Version | GTIN (EAN) | Qty. | Product data | Packaging |
|-----------------------------------|----------------------------|---|---------------|-----------|---|-----------|
| BLZP 5.08HC/07/270 SN OR BX | 1948840000 | PCB plug-in connector, female plug, 5.08 mm, No. of poles: 7, 270°, Screw connection, Clamping range, max.: 4 mm ² , Box | 4032248626298 | 48 pc(s). | IEC: 400 V / 23 A / 0.2 - 4 mm ² UL: 300 V / 20 A / AWG 26 - AWG 12 | Box |
| BLZP 5.08HC/07/270 SN BK BX | 1949070000 | PCB plug-in connector, female plug, 5.08 mm, No. of poles: 7, 270°, Screw connection, Clamping range, max.: 4 mm ² , Box | 4032248626526 | 48 pc(s). | IEC: 400 V / 23 A / 0.2 - 4 mm ² UL: 300 V / 20 A / AWG 26 - AWG 12 | Box |

BLDT 5.08B


Female plugs with two clamping-yoke screw connections per pole for wire connections with 90° and 270° outlet directions. The female plugs provide space for labelling and can be coded.

General ordering data

| Type | Order No. | Version | GTIN (EAN) | Qty. | Product data | Packaging |
|--------------------------------|----------------------------|---|----------------------------|---|---|--------------|
| BLDT 5.08/07/-B SN OR BX | 1651790000 | PCB plug-in connector, female plug, 5.08 mm, No. of poles: 7, 180°, Screw connection, Clamping range, max.: 3.31 mm ² , Box | 4008190400477 | 40 pc(s). | IEC: 400 V / 14 A / 0.2 - 2.5 mm ² UL: 300 V / 10 A / AWG 26 - AWG 12 | Box |
| Discontinued | 2016-09-01T00:00:00+02:00 | BLDT 5.08/07/-B SN BK BX | 1673830000 | PCB plug-in connector, female plug, 5.08 mm, No. of poles: 7, 180°, Screw connection, Clamping range, | 4008190435561 | 40 pc(s). |

Data sheet

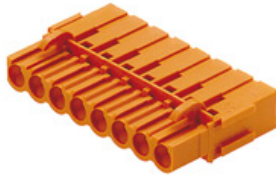
**OMNIMATE Signal - series BL/SL 5.08
SL 5.08/07/90 3.2SN OR BX**

Weidmüller Interface GmbH & Co. KG
Klingenbergstraße 16
D-32758 Detmold
Germany
Fon: +49 5231 14-0
Fax: +49 5231 14-292083
www.weidmueller.com

Mating connector (fully pluggable)

max. : 3.31 mm²,
Box

BLC 5.08BR



Female plugs with crimp wire connection system. The female plugs provide space for labelling and can be coded.

General ordering data

| Type | Order No. | Version | GTIN (EAN) | Qty. | Product data | Packaging |
|-------------------------------|----------------------------|--|----------------------------|--|---|--------------|
| BLC 5.08/07/180BR OR BX | 1649420000 | PCB plug-in connector, female plug, 5.08 mm, No. of poles: 7, 180°, Crimp connection, Clamping range, max. : 2.5 mm ² , Box | 4008190294533 | 50 pc(s). | IEC: 400 V / 21 A UL: 300 V / 10 A / AWG 26 - AWG 14 | Box |
| Discontinued | 2014-05-20T00:00:00+02:00 | BLC 5.08/07/180BR BK BX | 1712160000 | PCB plug-in connector, female plug, 5.08 mm, No. of poles: 7, 180°, Crimp connection, Clamping range, max. : 2.5 mm ² , Box | 4008190935177 | 50 pc(s). |

BLC 5.08R



Female plugs with crimp wire connection system. The female plugs provide space for labelling and can be coded.

General ordering data

| Delivery status | Available until | Type | Order No. | Version | GTIN (EAN) | Qty. |
|-----------------|---------------------------|------------------------|----------------------------|---|---------------|--------------|
| Discontinued | 2016-04-08T00:00:00+02:00 | BLC 5.08/07/180R BK BX | 1712010000 | PCB plug-in connector, female plug, 5.08 mm, No. of poles: 7, 180°, Crimp connection, Clamping range, | 4008190935023 | 50 pc(s). |

**OMNIMATE Signal - series BL/SL 5.08
SL 5.08/07/90 3.2SN OR BX**

Weidmüller Interface GmbH & Co. KG
Klingenbergstraße 16
D-32758 Detmold
Germany
Fon: +49 5231 14-0
Fax: +49 5231 14-292083
www.weidmueller.com

Mating connector (fully pluggable)

max. : 2.5 mm²,
Box

| | | | | | |
|------------------------------|----------------------------|--|-------------------------|---|-----|
| BLC 5.08/07/180R OR BX | 1610540000 | PCB plug-in connector, female plug, 5.08 mm, No. of poles: 7, 180°, Crimp connection, Clamping range, max. : 2.5 mm ² , Box | 4008190156398 50 pc(s). | IEC: 400 V / 21 A UL: 300 V / 10 A / AWG 26 - AWG 14 | Box |
|------------------------------|----------------------------|--|-------------------------|---|-----|

BLDF 5.08/180 SN


The powerful daisy-chain solution for high-performance signal bus applications is also suitable for 400V auxiliary power chains with 18.5A current-carrying capacity. The large clamping capacity (up to 2.5mm² wire cross-sections) is particularly beneficial for long bus cables or high currents because of the low voltage drop. Four flange variations, including the patented release latch, allow for user-friendly unplugging designs.

General ordering data

| Type | Order No. | Version | GTIN (EAN) | Qty. | Product data | Packaging |
|---------------------------------|----------------------------|---|-------------------------|------|---|-----------|
| BLDF 5.08/07/180 SN OR BX | 1001200000 | PCB plug-in connector, female plug, 5.08 mm, No. of poles: 7, 180°, PUSH IN, Tension-clamp connection, Clamping range, max. : 3.31 mm ² , Box | 4032248817535 32 pc(s). | | IEC: 400 V / 20.8 A / 0.2 - 2.5 mm ² UL: 300 V / 18.5 A / AWG 12 - AWG 26 | Box |
| BLDF 5.08/07/180 SN BK BX | 1000910000 | PCB plug-in connector, female plug, 5.08 mm, No. of poles: 7, 180°, PUSH IN, Tension-clamp connection, Clamping range, max. : 3.31 mm ² , Box | 4032248817450 32 pc(s). | | IEC: 400 V / 20.8 A / 0.2 - 2.5 mm ² UL: 300 V / 18.5 A / AWG 12 - AWG 26 | Box |

BLL 5.08/180B


Female header for PCB mounting. The solder pin length is optimised for wave flow soldering.

General ordering data

| Type | Order No. | Version | GTIN (EAN) | Qty. | Product data | Packaging |
|------------------------------------|----------------------------|---|-------------------------|------|---------------------------------------|-----------|
| BLL 5.08/07/180B 3.2SN OR BX | 1682780000 | PCB plug-in connector, female header, Dovetails for fixing blocks, THT solder connection, 5.08 mm, No. | 4008190474546 48 pc(s). | | IEC: 400 V / 23 A UL: 300 V / 15 A | Box |

OMNIMATE Signal - series BL/SL 5.08 SL 5.08/07/90 3.2SN OR BX

Weidmüller Interface GmbH & Co. KG
 Klingenbergstraße 16
 D-32758 Detmold
 Germany
 Fon: +49 5231 14-0
 Fax: +49 5231 14-292083
 www.weidmueller.com

Mating connector (fully pluggable)

of poles: 7, 180°, Solder pin
 length (l): 3.2 mm, tinned,
 orange, Box

BLZP 5.08HC/225 SN

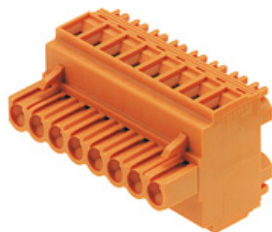


Clamping-yoke connection with right-angled (90° or 270°) or angled (225°) outlet direction. The female connectors provide space for labelling and can be coded. Fastened by means of a flange or release latch. They also provide an integrated plus/minus screw, protection against faulty insertion of the wire, and they are delivered with open clamping yokes. HC = High Current.

General ordering data

| Delivery status Available until | Type | Order No. | Version | GTIN (EAN) | Qty. |
|--|---|----------------------------|--|---|--------------|
| Discontinued 2016-04-08T00:00:00+02:00 | BLZP 5.08HC/07/225 SN BK BX | 1946610000 | PCB plug-in connector, female plug, 5.08 mm, No. of poles: 7, 225°, Screw connection, Clamping range, max. : 4 mm², Box | 4032248622382 | 48 pc(s). |
| BLZP 5.08HC/07/225 SN OR BX | PCB plug-in connector, female plug, 5.08 mm, No. of poles: 7, 225°, Screw connection, Clamping range, max. : 4 mm², Box | 1946300000 | 4032248621873 48 pc(s). | IEC: 400 V / 17.5 A / 0.2 - 4 mm² UL: 300 V / 15 A / AWG 26 - AWG 12 | Box |

BLDT 5.08



Female plugs with two clamping-yoke screw connections per pole for wire connections with 90° and 270° outlet directions. The female plugs provide space for labelling and can be coded.

General ordering data

| Type | Order No. | Version | GTIN (EAN) | Qty. | Product data | Packaging |
|-------------------------------|----------------------------|---|-------------------------|------|---|-----------|
| BLDT 5.08/07/- SN OR BX | 1644780000 | PCB plug-in connector, female plug, 5.08 mm, No. of poles: 7, 180°, Screw connection, Clamping range, max. : 3.31 mm², Box | 4008190283995 40 pc(s). | | IEC: 400 V / 14 A / 0.2 - 2.5 mm² UL: 300 V / 10 A / AWG 26 - AWG 12 | Box |

**OMNIMATE Signal - series BL/SL 5.08
SL 5.08/07/90 3.2SN OR BX**

Weidmüller Interface GmbH & Co. KG
Klingenbergstraße 16
D-32758 Detmold
Germany
Fon: +49 5231 14-0
Fax: +49 5231 14-292083
www.weidmueller.com

Mating connector (fully pluggable)

| | | | | | | |
|--------------|---------------------------|-------------------------|----------------------------|---|---------------|-----------|
| Discontinued | 2016-09-01T00:00:00+02:00 | BLDT 5.08/07/- SN BK BX | 1660760000 | PCB plug-in connector, female plug, 5.08 mm, No. of poles: 7, 180°, Screw connection, Clamping range, max. : 3.31 mm ² , Box | 4008190417215 | 40 pc(s). |
|--------------|---------------------------|-------------------------|----------------------------|---|---------------|-----------|

BLF 5.08HC/180 SN


Just as reliable as the millionfold proven original and featuring innovative details:
The BLF 5.08HC PUSH IN version of the BLZP 5.08HC female connector is not only different in terms of connection system; it also has a more compact design. Weidmüller's innovative PUSH IN spring connection system stands for easy and tool-free wire connection. HC = High Current.
In terms of versatility, the BLF 5.08HC offers just as much as the version which served as a model:

- 3 tested-and-proven wire outlet directions provide the usual flexibility for application-specific design
- 4 flange variations and the patented release latch allow the locking concept to be based on the requirements of the user
- Use the BLF 5.08HC and SL 5.08HC plug combination to reach the max. rated specifications

General ordering data

| Type | Order No. | Version | GTIN (EAN) | Qty. | Product data | Packaging |
|----------------------------|----------------------------|--|-----------------|-----------|---|-----------|
| BLF 5.08HC/07/180 SN BK BX | 1013480000 | PCB plug-in connector, female plug, 5.08 mm, No. of poles: 7, 180°, PUSH IN, Tension-clamp connection, Clamping range, max. : 3.31 mm ² , Box | 403224872163448 | 48 pc(s). | IEC: 400 V / 24 A / 0.2 - 2.5 mm ² UL: 300 V / 18.5 A / AWG 26 - AWG 12 | Box |
| BLF 5.08HC/07/180 SN OR BX | 1013740000 | PCB plug-in connector, female plug, 5.08 mm, No. of poles: 7, 180°, PUSH IN, Tension-clamp connection, Clamping range, max. : 3.31 mm ² , Box | 403224872185648 | 48 pc(s). | IEC: 400 V / 24 A / 0.2 - 2.5 mm ² UL: 300 V / 18.5 A / AWG 26 - AWG 12 | Box |

**OMNIMATE Signal - series BL/SL 5.08
SL 5.08/07/90 3.2SN OR BX**

Weidmüller Interface GmbH & Co. KG
Klingenbergstraße 16
D-32758 Detmold
Germany
Fon: +49 5231 14-0
Fax: +49 5231 14-292083
www.weidmueller.com

Mating connector (fully pluggable)
BLZ 5.00/270


Female plugs with clamping-yoke screw for wire connection with 270° outlet direction. The female plugs provide space for labelling and can be coded.

General ordering data

| Delivery status | Type | Order No. | Version | GTIN (EAN) | Qty. | Product data |
|-----------------|----------------------------|----------------------------|---|---------------|-----------|--|
| Discontinued | BLZ 5.00/07/270 SN DKGN BX | 1649940000 | PCB plug-in connector, female plug, 5.00 mm, No. of poles: 7, 270°, Screw connection, Clamping range, max. : 3.31 mm ² , Box | 4008190296520 | 50 pc(s). | IEC: 400 V / 15 A / 0.5 - 2.5 mm ² UL: 300 V / 10 A / AWG 26 - AWG 12 |

BLL 5.08/180


Female header for PCB mounting. The solder pin length is optimised for wave flow soldering.

General ordering data

| Type | Order No. | Version | GTIN (EAN) | Qty. | Product data | Packaging |
|------------------------------|----------------------------|---|---------------|-----------|---------------------------------------|-----------|
| BLL 5.08/07/180 3.2 SN OR BX | 1630760000 | PCB plug-in connector, female header, closed side, THT solder connection, 5.08 mm, No. of poles: 7, | 4008190204181 | 48 pc(s). | IEC: 400 V / 23 A UL: 300 V / 15 A | Box |

**OMNIMATE Signal - series BL/SL 5.08
SL 5.08/07/90 3.2SN OR BX**

Weidmüller Interface GmbH & Co. KG
Klingenbergstraße 16
D-32758 Detmold
Germany
Fon: +49 5231 14-0
Fax: +49 5231 14-292083
www.weidmueller.com

Mating connector (fully pluggable)

180°, Solder pin length (l):
3.2 mm, tinned, orange,
Box

| | | | | | | |
|--------------|---------------------------|--------------------------------|----------------------------|--|---------------|--------------|
| Discontinued | 2007-04-01T00:00:00+02:00 | BLL 5.08/07/180 4.5SN BK BX | 1646300000 | PCB plug-in connector, female header, closed side, THT solder connection, 5.08 mm, No. of poles: 7, 180°, Solder pin length (l): 4.5 mm, tinned, black, Box | 4008190285647 | 50 pc(s). |
|--------------|---------------------------|--------------------------------|----------------------------|--|---------------|--------------|

BLZP 5.08HC/90 SN


Female plugs with clamping-yoke connection for connecting wires with a right-angle (90° or 270°) outlet direction. The female connectors provide space for labelling and can be coded. Fastened by means of a flange or release latch. They also provide an integrated plus/minus screw, protection against faulty insertion of the wire, and they are delivered with open clamping yokes. HC = High Current.

General ordering data

| Type | Order No. | Version | GTIN (EAN) | Qty. | Product data | Packaging |
|----------------------------------|----------------------------|---|---------------|-----------|---|-----------|
| BLZP 5.08HC/07/90 SN OR BX | 1948050000 | PCB plug-in connector, female plug, 5.08 mm, No. of poles: 7, 90°, Screw connection, Clamping range, max. : 4 mm ² , Box | 4032248624270 | 48 pc(s). | IEC: 400 V / 23 A / 0.2 - 4 mm ² UL: 300 V / 20 A / AWG 26 - AWG 12 | Box |
| BLZP 5.08HC/07/90 SN BK BX | 1948290000 | PCB plug-in connector, female plug, 5.08 mm, No. of poles: 7, 90°, Screw connection, Clamping range, max. : 4 mm ² , Box | 4032248624812 | 48 pc(s). | IEC: 400 V / 23 A / 0.2 - 4 mm ² UL: 300 V / 20 A / AWG 26 - AWG 12 | Box |

**OMNIMATE Signal - series BL/SL 5.08
SL 5.08/07/90 3.2SN OR BX**

Weidmüller Interface GmbH & Co. KG
Klingenbergstraße 16
D-32758 Detmold
Germany
Fon: +49 5231 14-0
Fax: +49 5231 14-292083
www.weidmueller.com

Mating connector (fully pluggable)
BLF 5.08HC/270 SN


Just as reliable as the millionfold proven original and featuring innovative details:

The BLF 5.08HC PUSH IN version of the BLZP 5.08HC female connector is not only different in terms of connection system; it also has a more compact design. Weidmüller's innovative PUSH IN spring connection system stands for the future of easy and tool-free wire connection. HC = High Current.

In terms of versatility, the BLF 5.08HC offers just as much as the version which served as a model:

- 3 tested-and-proven wire outlet directions provide the usual flexibility for application-specific design
- 4 flange variations and the patented release latch allow the locking concept to be based on the requirements of the user
- Use the BLF 5.08HC and SL 5.08HC plug combination to reach the max. rated specifications

General ordering data

| Type | Order No. | Version | GTIN (EAN) | Qty. | Product data | Packaging |
|----------------------------------|----------------------------|---|----------------------------|---|--|--------------|
| BLF 5.08HC/07/270 SN OR BX | 1982750000 | PCB plug-in connector, female plug, 5.08 mm, No. of poles: 7, 270°, PUSH IN, Tension-clamp connection, Clamping range, max. : 3.31 mm ² , Box | 4032248686841 | 48 pc(s). | IEC: 400 V / 24 A / 0.2 - 2.5 mm ² UL: 300 V / 18.5 A / AWG 26 - AWG 12 | Box |
| Discontinued | 2016-04-08T00:00:00+02:00 | BLF 5.08HC/07/270 SN BK BX | 1981980000 | PCB plug-in connector, female plug, 5.08 mm, No. of poles: 7, 270°, PUSH IN, Tension-clamp connection, Clamping range, max. : 3.31 mm ² , Box | 4032248684670 | 48 pc(s). |

**OMNIMATE Signal - series BL/SL 5.08
SL 5.08/07/90 3.2SN OR BX**

Weidmüller Interface GmbH & Co. KG
Klingenbergstraße 16
D-32758 Detmold
Germany
Fon: +49 5231 14-0
Fax: +49 5231 14-292083
www.weidmueller.com

Mating connector (fully pluggable)
BLL 5.08/90


Female header for PCB mounting. The solder pin length is optimised for wave flow soldering.

General ordering data

| Type | Order No. | Version | GTIN (EAN) | Qty. | Product data | Packaging |
|-----------------------------------|----------------------------|---|---------------|-----------|---------------------------------------|-----------|
| BLL 5.08/07/90 3.2 SN OR BX | 1622990000 | PCB plug-in connector, female header, closed side, THT solder connection, 5.08 mm, No. of poles: 7, 90°, Solder pin length (l): 3.2 mm, tinned, orange, Box | 4008190194048 | 48 pc(s). | IEC: 400 V / 23 A UL: 300 V / 15 A | Box |

BLF 5.08HC/90 SN


Just as reliable as the millionfold proven original and featuring innovative details:
The BLF 5.08HC PUSH IN version of the BLZP 5.08HC female connector is not only different in terms of connection system; it also has a more compact design. Weidmüller's innovative PUSH IN spring connection system stands for the future of easy and tool-free wire connection. HC = High Current.
In terms of versatility, the BLF 5.08HC offers just as much as the version which served as a model:

- 3 tested-and-proven wire outlet directions provide the usual flexibility for application-specific design
- 4 flange variations and the patented release latch allow the locking concept to be based on the requirements of the user
- Use the BLF 5.08HC and SL 5.08HC plug combination to reach the max. rated specifications

General ordering data

| Delivery status | Available until | Type | Order No. | Version | GTIN (EAN) | Qty. |
|-----------------|---------------------------|------------------------------|----------------------------|--|---------------|--------------|
| Discontinued | 2016-04-08T00:00:00+02:00 | BLF 5.08HC/07/90 SN BK BX | 1000080001 | PCB plug-in connector, female plug, 5.08 mm, No. of poles: 7, 90°, PUSH IN, Tension-clamp connection, Clamping range, max. : 3.31 mm ² , Box | 4032248690015 | 48 pc(s). |

Data sheet

**OMNIMATE Signal - series BL/SL 5.08
SL 5.08/07/90 3.2SN OR BX**

Weidmüller Interface GmbH & Co. KG
Klingenbergstraße 16
D-32758 Detmold
Germany
Fon: +49 5231 14-0
Fax: +49 5231 14-292083
www.weidmueller.com

Mating connector (fully pluggable)

| | | | | | |
|---------------------------------|----------------------------|--|-------------------------|--|-----|
| BLF 5.08HC/07/90 SN OR BX | 1001580000 | PCB plug-in connector, female plug, 5.08 mm, No. of poles: 7, 90°, PUSH IN, Tension-clamp connection, Clamping range, max. : 3.31 mm ² , Box | 4032248693382 48 pc(s). | IEC: 400 V / 24 A / 0.2 - 2.5 mm ² UL: 300 V / 18.5 A / AWG 26 - AWG 12 | Box |
|---------------------------------|----------------------------|--|-------------------------|--|-----|

BLZ 5.00/180



Female plugs with clamping-yoke screw for wire connection with straight (180°) outlet direction. The female plugs provide space for labelling and can be coded.

General ordering data

| Delivery status | Available until | Type | Order No. | Version | GTIN (EAN) | Qty. |
|-----------------|---------------------------|-------------------------------|----------------------------|---|---------------|--------------|
| Discontinued | 2015-12-31T00:00:00+01:00 | BLZ 5.00/07/180 SN DKGN BX | 1646870000 | PCB plug-in connector, female plug, 5.00 mm, No. of poles: 7, 180°, Screw connection, Clamping range, max. : 3.31 mm ² , Box | 4008190288112 | 50 pc(s). |

OMNIMATE Signal - series BL/SL 5.08 SL 5.08/07/90 3.2SN OR BX

Weidmüller Interface GmbH & Co. KG
Klingenbergstraße 16
D-32758 Detmold
Germany
Fon: +49 5231 14-0
Fax: +49 5231 14-292083
www.weidmueller.com

Accessories

Additional accessories



No task is too small when creating the perfect solution.

Connections form just one part of the overall process. Small details are often the key to the perfect solution in applications where potentials are tested, grouped or even isolated.

A system is not a system without small but useful details:

- Test plugs - ensure reliable pick-up from diagnostic sockets
- Cross-connectors - ensure a stable electrical distribution contact directly at the connection
- Compartment partition elements - divide a large number of male connectors into several separate socket connector channels
- Locks and clips - optional vibration-resistant clip-on connection or mounting for male and female connectors

In tandem with the manufacturing process and application - more accessories = smaller workload

General ordering data

| Type | Order No. | Version | GTIN (EAN) | Qty. | Product data | Packaging |
|----------|----------------------------|---|---------------|------------|--------------|-----------|
| SL AT SW | 1770240000 | PCB plug-in connector, Accessories, Spacer, black, No. of poles: 1 | 4032248117710 | 100 pc(s). | | Box |
| SL AT OR | 1598300000 | PCB plug-in connector, Accessories, Spacer, orange, No. of poles: 1 | 4008190189266 | 100 pc(s). | | Box |

Coding elements



Only connects what is supposed to be connected: the right connection at the right place.

Coding elements and locking devices clearly assign connecting elements during the manufacturing process and operation

The coding elements and locking devices are inserted prior to assembly or during the cable assembly phase. The Weidmüller alternative: configure online using the variant configurator to precode prior to delivery.

Incorrect assembly on the circuit board and incorrect plugging of connecting elements is no longer possible. The advantage: no troubleshooting during manufacture and no operational errors by the user.

General ordering data

| Type | Order No. | Version | GTIN (EAN) | Qty. | Product data | Packaging |
|-----------------|----------------------------|--|---------------|------------|--------------|-----------|
| BLZ/SL KO OR BX | 1573010000 | PCB plug-in connector, Accessories, Coding element, orange, No. of poles: 1 | 4008190048396 | 100 pc(s). | | Box |

OMNIMATE Signal - series BL/SL 5.08 SL 5.08/07/90 3.2SN OR BX

Weidmüller Interface GmbH & Co. KG
 Klingenbergstraße 16
 D-32758 Detmold
 Germany
 Fon: +49 5231 14-0
 Fax: +49 5231 14-292083
 www.weidmueller.com

Accessories

| | | | |
|---|---|------------------------|-----|
| BLZ/SL KO BK 1545710000 BX | PCB plug-in connector, Accessories, Coding element, black, No. of poles: 1 | 400819008714250 pc(s). | Box |
|---|---|------------------------|-----|

LED Light guides



Effective: the link between LED and front panel.

Floodlight indicators allow users to monitor the switching states without requiring a special design: optical plastic directs the light from standard LEDs around a bend into the connectors or through the front plate.

The fibre-optic elements are simply clipped behind the relevant 90° bend male connectors (90° outlet direction). Versions with different incoming light beam heights achieve maximum light efficiency for LEDs with different designs or heights.

The advantages compared to conventional solutions:

- No additional LED circuit board required behind the front panel
- No "long-legged" LEDs with separate mounting required
- Bent fibre-optic cable line for maximum light efficiency
- Uncomplicated front plate bore holes due to circular shape of outgoing light beam
- Easy to maintain correct clearance and creepage distance
- Can be partitioned for smaller pole numbers

The result: simplified manufacturing process, reduced costs and simplified design

General ordering data

| Delivery status | Available until | Type | Order No. | Version | GTIN (EAN) | Qty. |
|-----------------|---------------------------|---------------|----------------------------|--|---------------|-----------|
| Discontinued | 2010-05-31T00:00:00+02:00 | SL FLA 1.5/24 | 1595850000 | PCB plug-in connector, Accessories, Flood-light display, Transparent, No. of poles: 1 | 4008190092573 | 10 pc(s). |
| | | SL FLA 9.0/1 | 1580120000 | PCB plug-in connector, Accessories, Flood-light display, Transparent, No. of poles: 1 | | Box |
| | | SL FLA 3.8/1 | 1580110000 | PCB plug-in connector, Accessories, Flood-light display, Transparent, No. of poles: 1 | | Box |
| Discontinued | 2010-05-31T00:00:00+02:00 | SL FLA 3.8/24 | 1595860000 | PCB plug-in connector, Accessories, Flood-light display, Transparent, No. of poles: 1 | 4008190140892 | 10 pc(s). |

Data sheet

OMNIMATE Signal - series BL/SL 5.08 SL 5.08/07/90 3.2SN OR BX

Weidmüller Interface GmbH & Co. KG
 Klingenbergstraße 16
 D-32758 Detmold
 Germany
 Fon: +49 5231 14-0
 Fax: +49 5231 14-292083
 www.weidmueller.com

Accessories

| | | | | |
|--|---|----------------------------|---|----------------------------|
| SL FLA 2,3/24 1636680000 | PCB plug-in connector, Accessories, Flood-light display, Transparent, No. of poles: 1 | 4008190409968 | 10 pc(s). | Box |
| Discontinued 2010-05-31T00:00:00+02:00 | SL FLA 9.0/24 | 1595870000 | PCB plug-in connector, Accessories, Flood-light display, Transparent, No. of poles: 1 | 4008190079796 10 pc(s). |
| SL FLA 2,3/1 1636670000 | PCB plug-in connector, Accessories, Flood-light display, Transparent, No. of poles: 1 | 4008190409975 | 100 pc(s). | Box |
| SL FLA 1.5/1 1580100000 | PCB plug-in connector, Accessories, Flood-light display, Transparent, No. of poles: 1 | 4008190152475 | 100 pc(s). | Box |

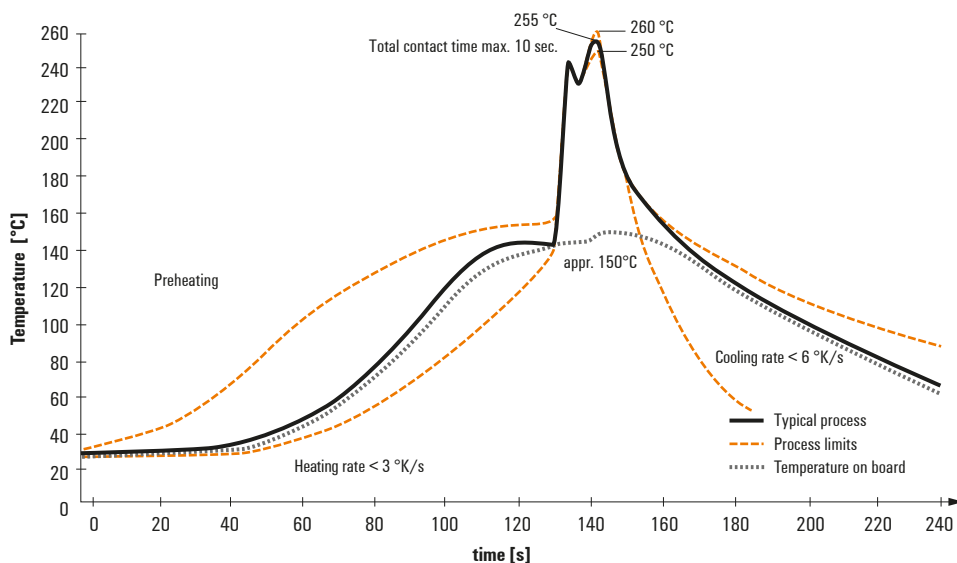
Recommended wave soldering profiles

Weidmüller Interface GmbH & Co. KG
 Klingenbergstraße 16
 D-32758 Detmold
 Germany
 Fon: +49 5231 14-0
 Fax: +49 5231 14-292083
 www.weidmueller.com

Single Wave:



Double Wave:



Wave soldering profiles

Wired connection elements should be processed in accordance with the DIN EN 61760-1 standard. We have included two recommendations for practical wave soldering profiles, with which Weidmüller PCB terminals and connectors are qualified.

When choosing a suitable profile for your application, the following factors also need to be considered:

- PCB thickness
- Proportion of Cu in the layers
- Single/double-sided assembly
- Product range
- Heating and cooling rates

The single and double wave profiles each indicate the recommended operating range, including the maximum soldering temperature of 260°C. In practice, the maximum soldering temperature is quite often well below the above maximum profile.