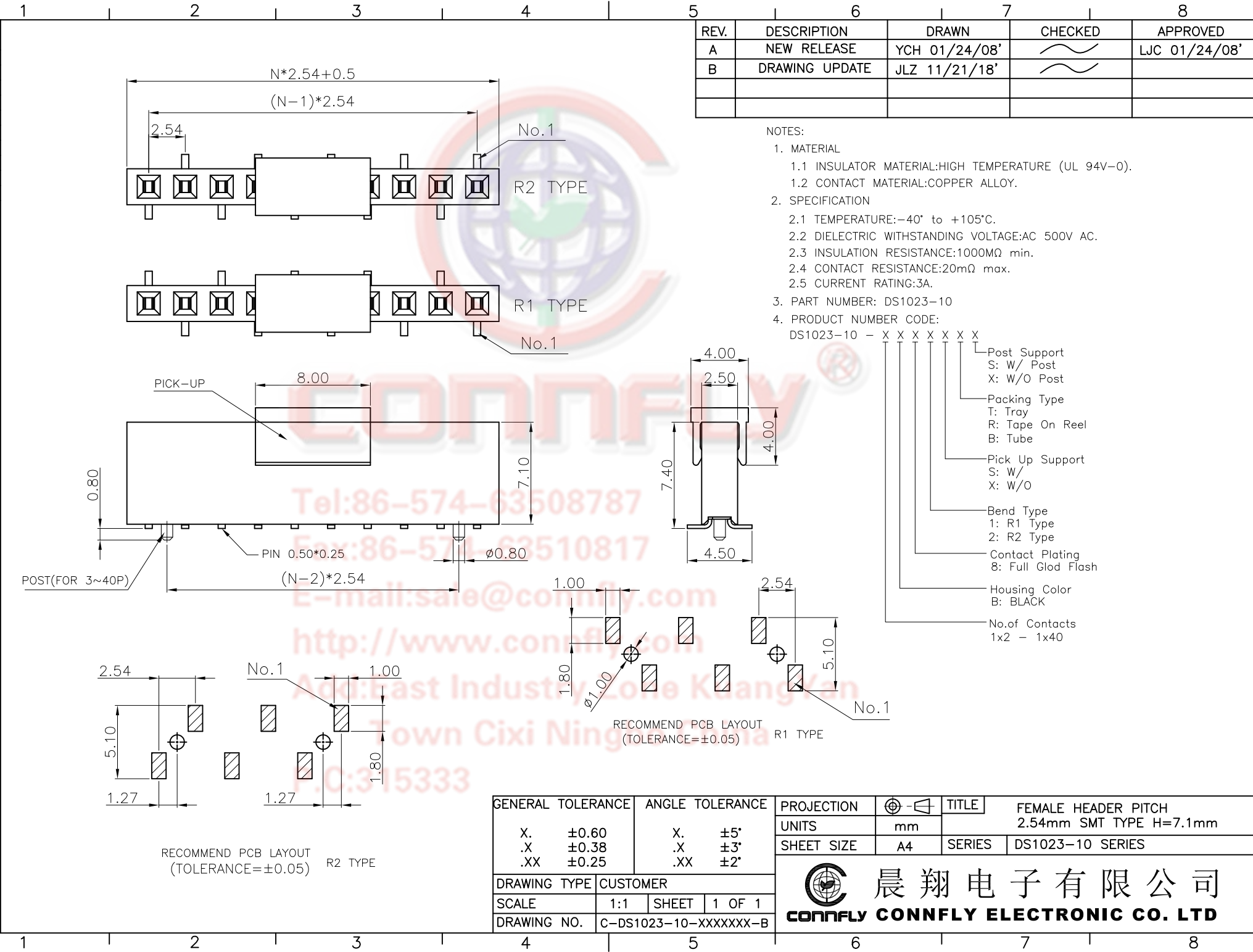


The information provided herein is from CONNELY Electronic Co., Ltd. and is confidential. Any disclosure to a party other than the recipient is prohibited. The intellectual properties and its rights contained herein, including but not limited to, trademarks, patents, copyrights, trade secrets, and technical know-how, are owned exclusively by CONNELY or its affiliates. Unauthorized use of any part of this document in any format or manner. CONNELY may enforce its intellectual property rights at its own discretion; failures or delays to exercise such rights does not constitute a waiver of such rights.

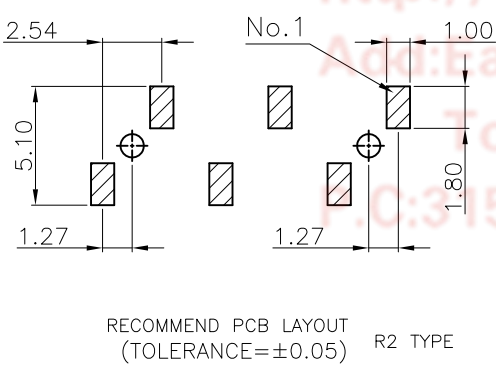


REV.	DESCRIPTION	DRAWN	CHECKED	APPROVED
A	NEW RELEASE	YCH 01/24/08'		LJC 01/24/08'
B	DRAWING UPDATE	JLZ 11/21/18'		

- NOTES:
- MATERIAL
    - INSULATOR MATERIAL: HIGH TEMPERATURE (UL 94V-0).
    - CONTACT MATERIAL: COPPER ALLOY.
  - SPECIFICATION
    - TEMPERATURE: -40° to +105°C.
    - DIELECTRIC WITHSTANDING VOLTAGE: AC 500V AC.
    - INSULATION RESISTANCE: 1000MΩ min.
    - CONTACT RESISTANCE: 20mΩ max.
    - CURRENT RATING: 3A.
  - PART NUMBER: DS1023-10
  - PRODUCT NUMBER CODE:
 

DS1023-10 - X X X X X X X X

    - Post Support: S: W/ Post, X: W/O Post
    - Packing Type: T: Tray, R: Tape On Reel, B: Tube
    - Pick Up Support: S: W/, X: W/O
    - Bend Type: 1: R1 Type, 2: R2 Type
    - Contact Plating: 8: Full Glod Flash
    - Housing Color: B: BLACK
    - No. of Contacts: 1x2 - 1x40



GENERAL TOLERANCE		ANGLE TOLERANCE	
X.	±0.60	X.	±5°
.X	±0.38	.X	±3°
.XX	±0.25	.XX	±2°

DRAWING TYPE	CUSTOMER		
SCALE	1:1	SHEET	1 OF 1
DRAWING NO.	C-DS1023-10-XXXXXXX-B		

PROJECTION	TITLE	FEMALE HEADER PITCH	
		2.54mm SMT TYPE H=7.1mm	
UNITS	mm	SHEET	DS1023-10 SERIES

**晨翔电子有限公司**  
**CONNFLY CONNELY ELECTRONIC CO. LTD**