

A70P

SEMICONDUCTOR PROTECTION FUSES



A70P Amp-trap® Form 101 Semiconductor Protection fuses were developed for higher voltage AC and DC drives, UPS systems, reduced voltage motor starters and similar applications where lower I²t and superior reliability were needed. A70P is a very popular fuse, available in a wide range of ratings. Typically used for replacement.

Features/Benefits

- **Low I²t** minimizes damage to protected components on short circuit
- **Controlled arc voltage** reduces stress to circuit components during fuse clearing
- **Choice of mounting types** helps in equipment design

Ratings

- **AC:** 10-1000A
700VAC, 100kA I.R.
- **DC:** 10-800A
650VDC, 100kA I.R.
L/R= 10ms

Approvals

- UL Recognized Component
- AC: Guide No. JFHR2 (10-1000A)
- DC: Tested to UL Standard 198L parameters (10-800A)

HIGHLIGHTS:

- Very Fast Acting
- Current Limiting
- Low I²t
- Indicator Options Available

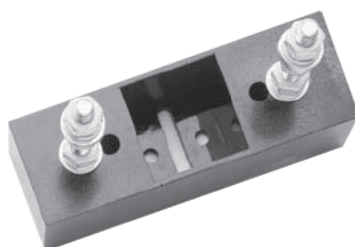
APPLICATIONS:

- Protection of 700V or less DC drives, UPS, inverters, reduced voltage starters, etc.



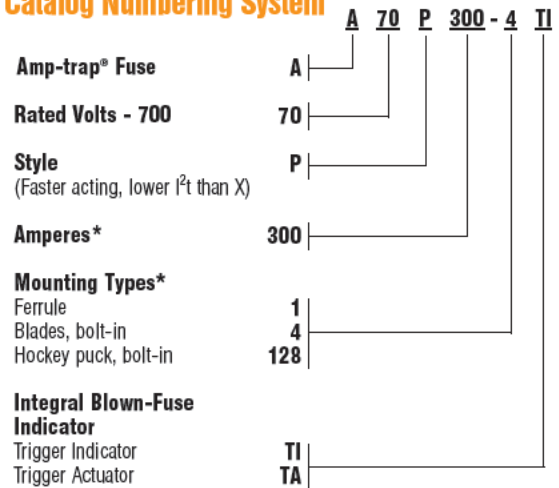
Single Pole Fuse Blocks for A70P Fuses

| FUSE AMPERE RATING | FUSE BLOCK CATALOG NUMBER |
|--------------------|---------------------------|
| 10-30 (Type 1) | 70316 |
| 31-60 | P243C |
| 61-100 | P243C |
| 101-200 | P266A |
| 201-400 | P266A |
| 401-600 | P266F |
| 601-800 | 1SC375 |



*Contact technical services for application data.

Catalog Numbering System



* For ampere ratings and types not listed, consult the factory.

A70P

SEMICONDUCTOR PROTECTION FUSES

Standard Fuse Ampere Ratings, Catalog Numbers

| AMPERE RATING | CATALOG NUMBER | OUTLINE FIG. | AMPERE RATING | CATALOG NUMBER | OUTLINE FIG. | AMPERE RATING | CATALOG NUMBER | OUTLINE FIG. |
|---------------|----------------|--------------|---------------|----------------|--------------|---------------|----------------|--------------|
| 10 | A70P10-1 | 1 | 80 | A70P80-4 | 3 | 300 | A70P300-4 | 3 |
| 10 | A70P10-4 | 2 | 80 | A70P80-4TA | 4 | 350 | A70P350-4 | 3 |
| 15 | A70P15-1 | 1 | 80 | A70P80-4TI | 3 | 400 | A70P400-4 | 3 |
| 15 | A70P15-4 | 2 | 90 | A70P90-4 | 3 | 400 | A70P400-4TA | 4 |
| 20 | A70P20-1 | 1 | 100 | A70P100-4 | 3 | 400 | A70P400-4TI | 3 |
| 25 | A70P25-1 | 1 | 100 | A70P100-4TA | 4 | 450 | A70P450-4 | 3 |
| 25 | A70P25-4 | 2 | 125 | A70P125-4 | 3 | 500 | A70P500-4 | 3 |
| 30 | A70P30-1 | 1 | 125 | A70P125-4TA | 4 | 600 | A70P600-4 | 3 |
| 30 | A70P30-4 | 2 | 150 | A70P150-4 | 3 | 600 | A70P600-4TA | 4 |
| 35 | A70P35-4 | 3 | 150 | A70P150-4TA | 4 | 600 | A70P600-4TI | 3 |
| 40 | A70P40-4 | 3 | 150 | A70P150-4TI | 3 | 700 | A70P700-4 | 5 |
| 40 | A70P40-4TA | 4 | 175 | A70P175-4 | 3 | 700 | A70P700-4TI | 5 |
| 40 | A70P40-4TI | 3 | 200 | A70P200-4 | 3 | 800 | A70P800-4 | 5 |
| 50 | A70P50-4 | 3 | 200 | A70P200-4TA | 4 | 800 | A70P800-4TI | 5 |
| 60 | A70P60-4 | 3 | 200 | A70P200-4TI | 3 | 900 | A70P900-4 | 6 |
| 60 | A70P60-4TA | 4 | 225 | A70P225-4 | 3 | 1000 | A70P1000-4 | 6 |
| 60 | A70P60-4TI | 3 | 250 | A70P250-4 | 3 | 1200 | A70P1200-4 | 7 |
| 70 | A70P70-4 | 3 | 250 | A70P250-4TA | 4 | | | |
| 70 | A70P70-4TI | 3 | 250 | A70P250-4TI | 3 | | | |

For ampere ratings and styles not listed, call Technical Services.

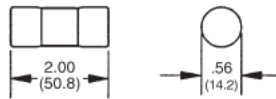


Figure 1

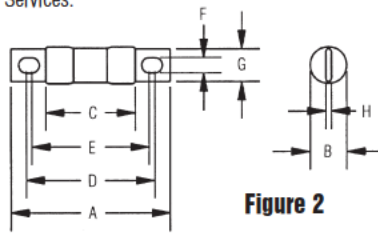


Figure 2

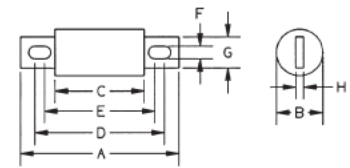


Figure 3

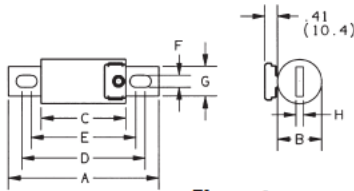


Figure 4

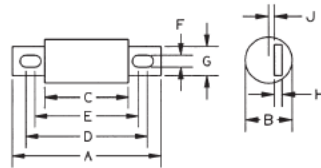


Figure 5

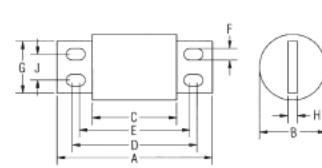


Figure 6

Dimensions

| OUTLINE REF. | MOUNTING TYPE | FIG. | DIMENSIONS - INCHES (mm) | | | | | | | | | | |
|-----------------|---------------|-------|--------------------------|----------------|----------------|-----------------|-----------------|-----------------|-----------------|---------------|----------------|---------------|---|
| | | | A | B | C | D | E | F | G | H | J | K | |
| A70P10 to 30 | 1 | 1 | 2.00 (50.8) | .56 (14.2) | - | - | - | - | - | - | - | - | - |
| A70P10 to 30 | 4 | 2 | 2.88 (73.2) | .56 (14.2) | 1.88 (47.8) | 2.50 (63.5) | - | .27 (6.9) | .41 (10.4) | - | - | - | - |
| A70P35 to 60 | 4, 4TA*, 4TI | 3, 4* | 4.38 (111) | 1.00 (25.4) | 2.88 (73.2) | 3.69 (93.7) | 3.56 (90.4) | .31 (7.9) | .75 (19.1) | .06 (1.5) | - | - | - |
| A70P70 to 100 | 4, 4TA*, 4TI | 3, 4* | 4.38 (111) | 1.22 (31.0) | 2.88 (73.2) | 3.69 (93.7) | 3.56 (90.4) | .31 (7.9) | 1.00 (25.4) | .19 (4.8) | - | - | - |
| A70P125 to 200 | 4, 4TA*, 4TI | 3, 4* | 5.09 (129) | 1.50 (38.1) | 2.84 (72.1) | 4.16 (106) | 3.53 (89.7) | .41 (10.4) | 1.00 (25.4) | .25 (6.4) | - | - | - |
| A70P225 to 400 | 4, 4TA*, 4TI | 3, 4* | 5.09 (129) | 2.00 (50.8) | 2.84 (72.1) | 4.16 (106) | 3.53 (89.7) | .41 (10.4) | 1.50 (38.1) | .24 (6.4) | - | - | - |
| A70P450 to 600 | 4, 4TA*, 4TI | 3, 4* | 7.09 (180) | 2.50 (63.5) | 2.84 (72.1) | 5.25 (133) | 4.94 (125) | .53 (13.5) | 2.00 (50.8) | .38 (9.7) | - | - | - |
| A70P700 to 800 | 4, 4TI | 5 | 6.81 (173) | 2.88 (73.2) | 3.31 (84.1) | 5.31 (135) | - | .63 (16.0) | 2.00 (50.8) | .38 (9.7) | .31 (7.9) | - | - |
| A70P900 to 1000 | 4, 4TI | 6 | 7.59 (193) | 3.50 (88.9) | 3.84 (97.5) | 5.97 (152) | 5.22 (133) | .63 (16.0) | 2.75 (69.9) | .50 (12.7) | 1.38 (35.1) | - | - |
| A70P1200 | 4 | 7 | 10.84 (275.4) | 4.5 (114.3) | 3.84 (97.6) | 6.84 (173.7) | 5.84 (148.3) | 9.34 (237.3) | 9.59 (243.6) | 3.5 (88.9) | .63 (15.9) | .75 (19.1) | - |

* Optional Trigger Actuator (TA)

