

AMP-TRAP®—Series Q European Dimension

**A-66C****SEMICONDUCTOR PROTECTION FUSE-LINKS****HIGHLIGHTS:**

- Extremely Fast Acting
- Current Limiting
- Very Low  $I^2t$
- Worldwide Acceptability

**Ratings**

- **AC:** 690V, 200kA I.R.  
Size 1: 80-700A  
Size 2: 315-1100A  
Size 3: 450-1250A
- **AC:** 600V, 200kA I.R.  
Size 1: 800-900A  
Size 2: 1250A  
Size 3: 1400A
- **DC:** 600V, 100kA I.R.  
Size 1: 80-900A  
Size 2: 315-1250A  
Size 3: 450-1400A

**APPLICATIONS:**

- Protection of rectifiers, inverters, DC drives, worldwide

**Approvals**

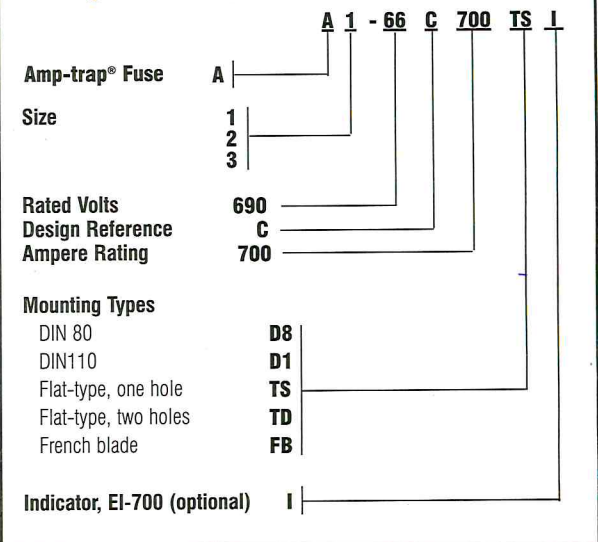
- UL Recognized Component
- AC: UL Guide No. JFHR2
- IEC Std. 269-4

**AMP-TRAP® SERIES Q  
EUROPEAN DIMENSION 690V FUSE-LINKS  
FOR SEMICONDUCTOR PROTECTION**

Gould Shawmut A-66C fuse-links, sizes 1, 2 and 3, rated 690VAC, are tested and verified at 726 volts AC, in accordance with IEC269-4, are UL Recognized and are also rated up to 600 volts DC. The A-66C series has five worldwide mounting styles complying with DIN 80, DIN 110 and French blade, plus flat ended, with one or two tapped holes. They have high grade alumina oxide bodies, solidified sand filler and silver elements. Each fuse-link can be ordered with or without a blown-fuse indicator (EI-700) attached or this indicator can be added at any time, even after installation. A Microswitch (Add-On-Switch) can be clipped to the EI-700 for remote signalling.

**Features/Benefits**

- **IEC 269-4 compliance** for worldwide semiconductor applications
- **5 mounting styles** for mounting and replacement everywhere
- **600 Volts DC rating**, most sizes
- **Wide range of ampere ratings** in each body size for design flexibility

**Catalog Numbering System**

# A-66C

# SEMICONDUCTOR PROTECTION FUSE-LINKS

## Ratings and AC Application Data

Body Size	Amp Rating	Rated Voltage	Pre-Arc I <sup>t</sup> (A <sup>2</sup> s x 10 <sup>3</sup> )	Total I <sup>t</sup> (A <sup>2</sup> s x 10 <sup>3</sup> ) @ Rated Voltage	Watts Loss @ Rated Current (w)	DIN 80 Catalog No.	DIN 100 Catalog No.	Tapped Single Catalog No.	Tapped Double Catalog No.	French Blade Catalog No.
1	80	690	0.31	1.7	18	A1-66C80D8	A1-66C80D1	A1-66C80TS	-	A1-66C80FB
	100	690	0.61	3.3	20	A1-66C100D8	A1-66C100D1	A1-66C100TS	-	A1-66C100FB
	125	690	0.79	4.3	28	A1-66C125D8	A1-66C125D1	A1-66C125TS	-	A1-66C125FB
	160	690	1.5	8.0	33	A1-66C160D8	A1-66C160D1	A1-66C160TS	-	A1-66C160FB
	200	690	2.4	14	41	A1-66C200D8	A1-66C200D1	A1-66C200TS	-	A1-66C200FB
	250	690	4.1	22	47	A1-66C250D8	A1-66C250D1	A1-66C250TS	-	A1-66C250FB
	315	690	8	44	53	A1-66C315D8	A1-66C315D1	A1-66C315TS	-	A1-66C315FB
	350	690	10	57	57	A1-66C350D8	A1-66C350D1	A1-66C350TS	-	A1-66C350FB
	375	690	13	71	59	A1-66C375D8	A1-66C375D1	A1-66C375TS	-	A1-66C375FB
	400	690	16	86	60	A1-66C400D8	A1-66C400D1	A1-66C400TS	-	A1-66C400FB
	450	690	21	120	67	A1-66C450D8	A1-66C450D1	A1-66C450TS	-	A1-66C450FB
	500	690	27	150	70	A1-66C500D8	A1-66C500D1	A1-66C500TS	-	A1-66C500FB
	550	690	42	230	72	A1-66C550D8	A1-66C550D1	A1-66C550TS	-	A1-66C550FB
	630	690	60	320	77	A1-66C630D8	A1-66C630D1	A1-66C630TS	-	A1-66C630FB
	700	690	82	450	83	A1-66C700D8	A1-66C700D1	A1-66C700TS	-	A1-66C700FB
	800	600*	120	540	90	A1-66C800D8	A1-66C800D1	A1-66C800TS	-	A1-66C800FB
	900	600*	170	750	101	A1-66C900D8	A1-66C900D1	A1-66C900TS	-	A1-66C900FB
	2	315	690	5.1	29	53	A2-66C315D8	A2-66C315D1	A2-66C315TS	-
350		690	8.8	48	60	A2-66C350D8	A2-66C350D1	A2-66C350TS	-	A2-66C350FB
400		690	15	80	60	A2-66C400D8	A2-66C400D1	A2-66C400TS	A2-66C400TD	A2-66C400FB
450		690	17	93	69	A2-66C450D8	A2-66C450D1	A2-66C450TS	A2-66C450TD	A2-66C450FB
500		690	24	130	74	A2-66C500D8	A2-66C500D1	A2-66C500TS	A2-66C500TD	A2-66C500FB
550		690	32	180	77	A2-66C550D8	A2-66C550D1	A2-66C550TS	A2-66C550TD	A2-66C550FB
630		690	44	240	86	A2-66C630D8	A2-66C630D1	A2-66C630TS	A2-66C630TD	A2-66C630FB
700		690	62	340	90	A2-66C700D8	A2-66C700D1	A2-66C700TS	A2-66C700TD	A2-66C700FB
800		690	94	520	95	A2-66C800D8	A2-66C800D1	A2-66C800TS	A2-66C800TD	A2-66C800FB
900		690	150	800	96	A2-66C900D8	A2-66C900D1	A2-66C900TS	A2-66C900TD	A2-66C900FB
3	450	690	13	73	90	A3-66C450D8	A3-66C450D1	A3-66C450TS	-	A3-66C450FB
	500	690	20	110	91	A3-66C500D8	A3-66C500D1	A3-66C500TS	A3-66C500TD	A3-66C500FB
	550	690	24	130	101	A3-66C550D8	A3-66C550D1	A3-66C550TS	A3-66C550TD	A3-66C550FB
	630	690	38	200	105	A3-66C630D8	A3-66C630D1	A3-66C630TS	A3-66C630TD	A3-66C630FB
	700	690	53	290	109	A3-66C700D8	A3-66C700D1	A3-66C700TS	A3-66C700TD	A3-66C700FB
	800	690	83	450	114	A3-66C800D8	A3-66C800D1	A3-66C800TS	A3-66C800TD	A3-66C800FB
	900	690	120	650	123	A3-66C900D8	A3-66C900D1	A3-66C900TS	A3-66C900TD	A3-66C900FB
1000	690	180	970	125	A3-66C1000D8	A3-66C1000D1	A3-66C1000TS	A3-66C1000TD	A3-66C1000FB	
1100	690	210	1200	139	A3-66C1100D8	A3-66C1100D1	A3-66C1100TS	A3-66C1100TD	A3-66C1100FB	
1250	690	310	1700	150	A3-66C1250D8	A3-66C1250D1	A3-66C1250TS	A3-66C1250TD	A3-66C1250FB	
1400	600*	380	1800	176	A3-66C1400D8	A3-66C1400D1	A3-66C1400TS	A3-66C1400TD	A3-66C1400FB	

\* Rated voltage - 600

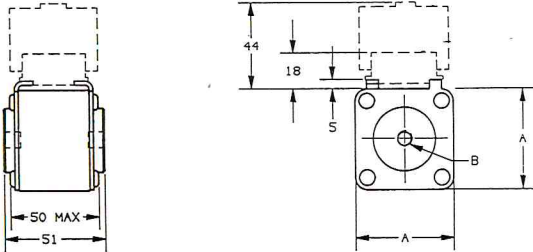
+ For field mountable indicator, order EI-700. To order fuse-link with indicator mounted, add "I" to end of Ref. No. (Example: A1-66C160D8 with indicator is A1-66C160D8I)

# A-66C

## SEMICONDUCTOR PROTECTION FUSE-LINKS

Recommended Bolt Tightening Torque (Newton-meters)

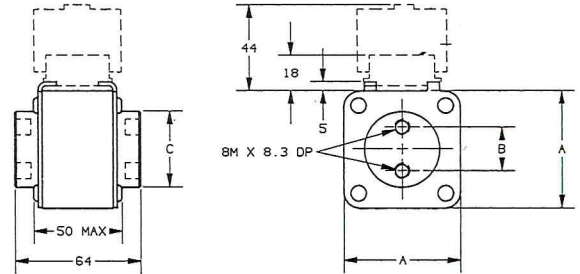
M8 - 9.5nm  
M10 - 16 nm  
M12 - 41 nm



Flat Type, Single Hole

Dimensions: Flat Type, Single Hole

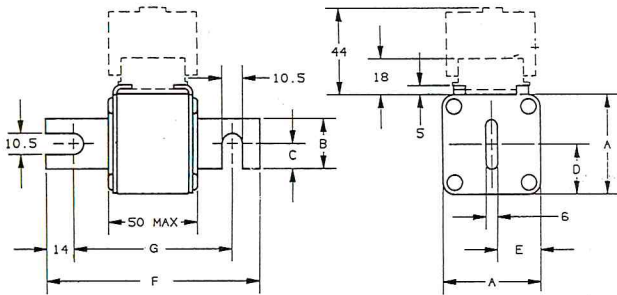
REFERENCE NUMBER	A	B
A1-66C(80 to 900) TS	50	M8 x 8.3 DP
A2-66C(315 to 1250) TS	59	M10 x 9.6 DP
A3-66C(450 to 1400) TS	73	M12 x 9.6 DP



Flat Type, Double Hole

Dimensions: Flat Type, Double Hole

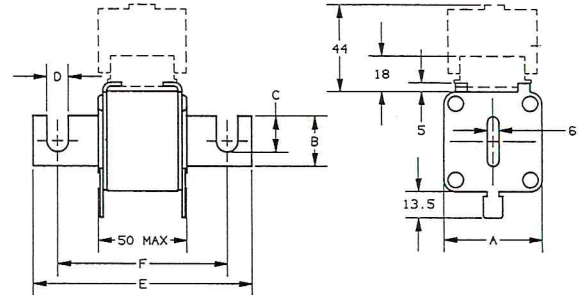
REFERENCE NUMBER	A	B	C
A2-66C(315 to 1250) TD	59	22	38
A3-66C(450 to 1400) TD	73	30	44



Blade Type, DIN 80 & 110 (per DIN 43 653)

Dimensions: Blade Type

	REFERENCE NUMBER	A	B	C	D	E	F	G
DIN 80	A1-66C(80 to 900) D8	50	25	12.5	25	22	108	80
	A2-66C(315 to 1250) D8	59	32	16	29.5	26.5	108	80
	A3-66C(450 to 1400) D8	73	40	20	36.5	33.5	108	80
DIN 110	A1-66C(80 to 900) D1	50	25	12.5	25	22	138	110
	A2-66C(315 to 1250) D1	59	32	16	29.5	26.5	138	110
	A3-66C(450 to 1400) D1	73	40	20	36.5	33.5	138	110



French Blade Type

Dimensions: French Blade Type

REFERENCE NUMBER	A	B	C	D	E	F
A1-66C(80 to 900) FB	50	25	18	10.5	111	86
A2-66C(315 to 1250) FB	59	32	22.5	13	126	91
A3-66C(450 to 1400) FB	73	40	26.5	13	126	91