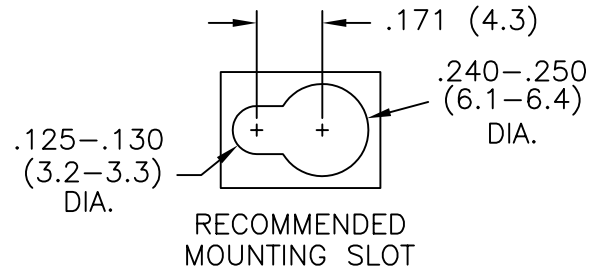


PART NO.	DIM. "A" ±.015(0.4)	BOARD HOLE DIA.	
KSLSP1-3-01	3/16 (4.8)	TO SNAP-LOCK IN A .156±.003 (4.00±0.08) DIA. HOLE IN A .062 (1.57) THICK BOARD	
KSLSP1-4-01	1/4 (6.4)		
KSLSP1-6-01	3/8 (9.5)		
KSLSP1-8-01	1/2 (12.7)		
KSLSP1-10-01	5/8 (15.9)		
*KSLSP1-12-01	3/4 (19.1)		
*KSLSP1-14-01	7/8 (22.2)		
*KSLSP1-16-01	1 (25.4)		
KSLSP2-3-01	3/16 (4.8)		TO SNAP-LOCK IN A .187±.003 (4.75±0.08) DIA. HOLE IN A .062 (1.57) THICK BOARD
KSLSP2-4-01	1/4 (6.4)		
KSLSP2-6-01	3/8 (9.5)		
KSLSP2-8-01	1/2 (12.7)		
KSLSP2-10-01	5/8 (15.9)		
*KSLSP2-12-01	3/4 (19.1)		
*KSLSP2-14-01	7/8 (22.2)		
*KSLSP2-16-01	1 (25.4)		

\*PARTS AVAILABLE BY SPECIAL ORDER ONLY



NOTES:

- MATERIAL: NYLON 6/6 (RMS-01).  
FLAME RETARDANT, NYLON (RMS-19),  
AVAILABLE BY SPECIAL ORDER ONLY.
- COLOR: NATURAL

REV	DESCRIPTION	ENGR	DATE
C	SEE ECN #914 FOR CHANGES	SK	01.14.05
B	SEE ECN #818 FOR CHANGES	SM	10.01.04
A	CHANGED FILE NO. AND TITLE BLOCK	SM	05.04.01

TITLE: KEY SLOT LOCKING SUPPORT POST				DWG IN IN (MM)	FINAL	PRINT TYPE
TOLERANCES UNLESS NOTED .XX=±.010 .XXX=±.005 FRAC=±1/64 ANG=±1°	FILE # KSLSP	DWN: P.B.	APP:	PART #	PRINT TYPE	
MAT'L: SEE NOTES	RE: RICHCO, INC.	DT: 05-02-94	DT:			
RICHCO, INC.			RICHCO INC.		SEE TABLE	CA
PO BOX 804238, CHICAGO, 60680			(773) 539-4060			

# Mouser Electronics

Authorized Distributor

Click to View Pricing, Inventory, Delivery & Lifecycle Information:

Essentra:

[KSLSP2-4-01](#) [KSLSP1-4-01](#) [KSLSP1-10-01](#) [KSLSP1-3-01](#) [KSLSP1-6-01](#) [KSLSP1-8-01](#) [KSLSP2-10-01](#) [KSLSP2-3-01](#) [KSLSP2-6-01](#) [KSLSP2-8-01](#)