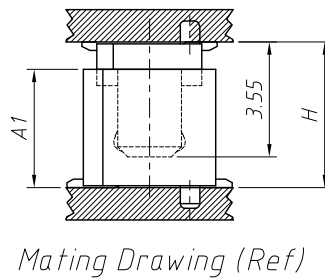
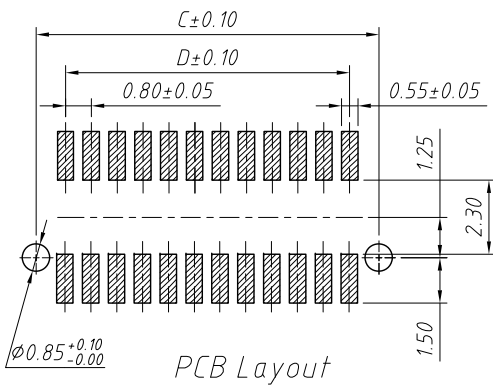
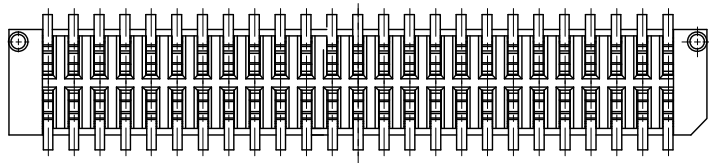
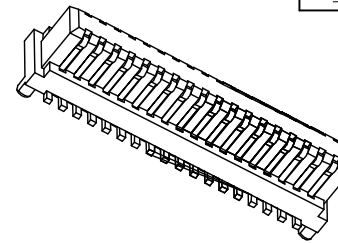
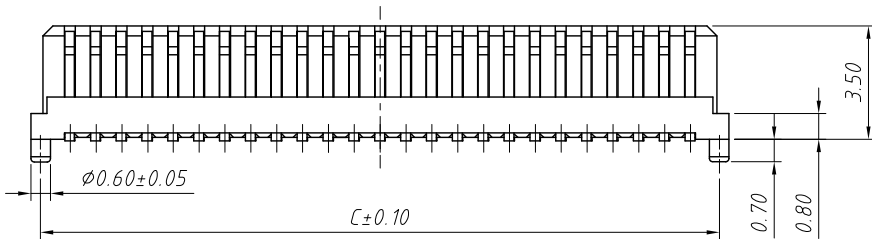
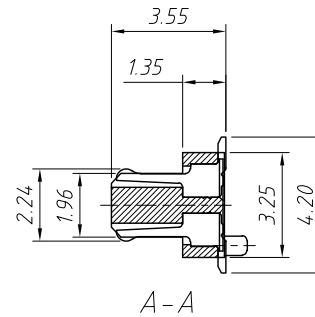
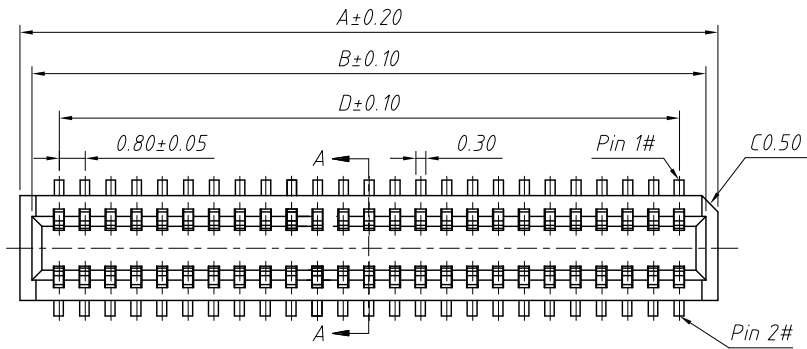


RoHS Compliance



Circuit	A	B	C	D	Circuit	A	B	C	D
10	5.60	4.85	5.00	3.20	34	15.20	14.45	14.60	12.80
12	6.40	5.65	5.80	4.00	36	16.00	15.25	15.40	13.60
14	7.20	6.45	6.60	4.80	38	16.80	16.05	16.20	14.40
16	8.00	7.25	7.40	5.60	40	17.60	16.85	17.00	15.20
18	8.80	8.05	8.20	6.40	50	21.60	20.85	21.00	19.20
20	9.60	8.85	9.00	7.20	60	25.60	24.85	25.00	23.20
22	10.40	9.65	9.80	8.00	68	28.80	28.05	28.20	26.40
24	11.20	10.45	10.60	8.80	70	29.60	28.85	29.00	27.20
26	12.00	11.25	11.40	9.60	80	33.60	32.85	33.00	31.20
28	12.80	12.05	12.20	10.40	90	37.60	36.85	37.00	35.20
30	13.60	12.85	13.00	11.20	100	41.60	40.85	41.00	39.20
32	14.40	13.65	13.80	12.00					

Mating Height Dimension

P/N Plug	P/N Socket	Mating Height
B0408-355M	B0408-365F	4.50
	B0408-415F	5.00
	B0408-515F	6.00
	B0408-565F	6.50
	B0508-470F	5.65

Material and Plated

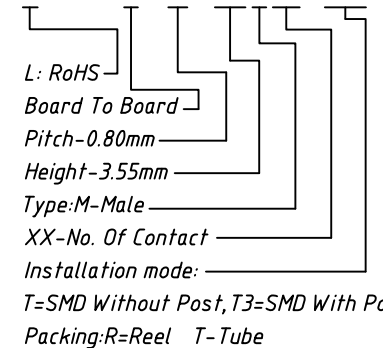
- Housing: High Temp Plastic, (Nylon 9T UL 94 V-0) White
- Contact: Phosphor Bronze
- Plated: Gold Plated

Specifications:

- Current Rating: 0.5A AC/DC
- Voltage Rating: 100V AC/DC
- Contact Resistance: 40mΩ max.
- Insulation Resistance: 100MΩ min.
- Withstanding Voltage: 500V AC for one minute
- Operating Temperature Range: -40°C to +105°C

Order Information:

L-KLS1-B0408-355MXX-T3R

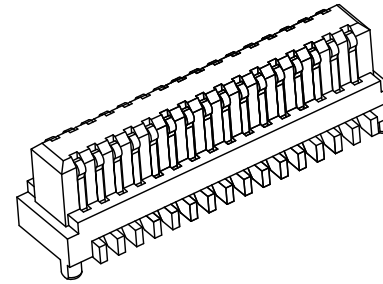
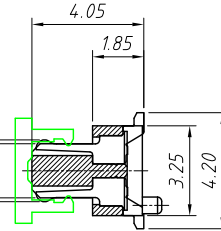
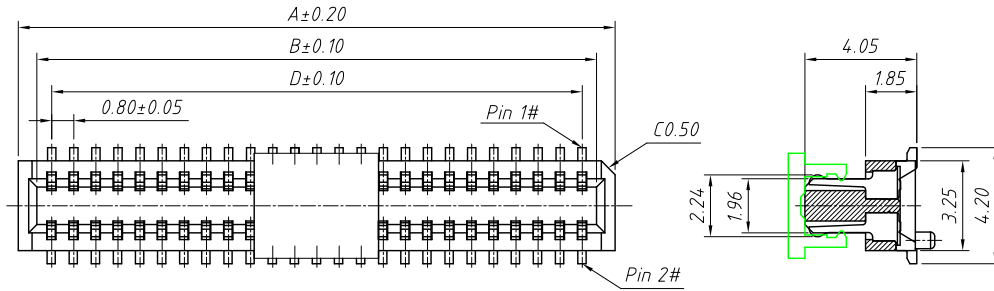


ANGLE TOLERANCE	PROJECTION	Description:
±3°		0.8mm Board To Board Connector Socket 3.55mm Height
GENERAL TOLERANCE	UNITS	mm
x.x ±0.30	SHEET SIZE	A4
x.xx ±0.20	Draw:	Daniel 2020-11-11
x.xxx ±0.10	Check:	Daniel 2020-11-11



NingBo KLS ELECTRONIC CO.,L TD.

RoHS Compliance



**Material and Plated**

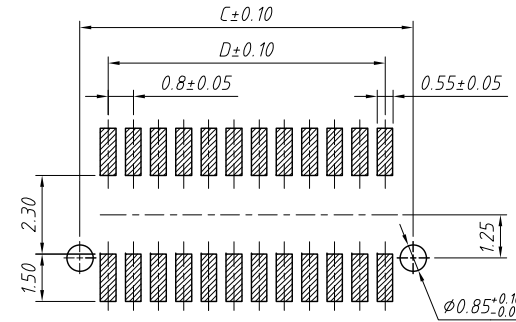
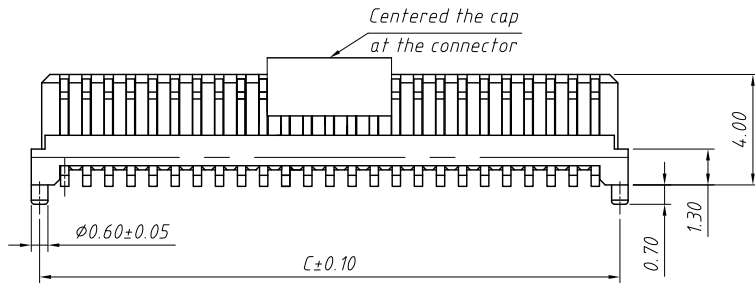
- 1.Housing:High Temp Plastic,(LCP UL94V-0)
- 2.Contact:Phosphor Bronze
- 3.Plated:Gold Plated
- 4.Package:800PCS/Reel

**Specifications:**

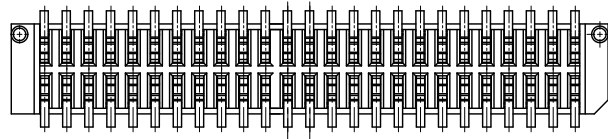
- 1.Current Rating:0.5A AC/DC
- 2.Voltage Rating:100V AC/DC
- 3.Contact Resistance:40mΩ, max.
- 4.Insulation Resistance:100MΩ, min.
- 5.Withstanding Voltage:500V AC for one minute
- 6.Operating Temperature Range:-40°C to + 105°C

**Mating Height Dimension**

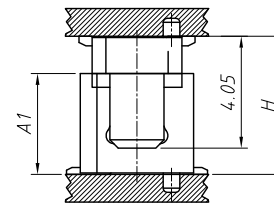
P/N Plug	P/N Socket	Mating Height
B0408-405M	B0408-415F	5.50
	B0408-565F	7.50
	B0508-470F	6.15



Recommended PCB Layout



Circuit	A	B	C	D	Circuit	A	B	C	D
10	5.60	4.85	5.00	3.20	34	15.20	14.45	14.60	12.80
12	6.40	5.65	5.80	4.00	36	16.00	15.25	15.40	13.60
14	7.20	6.45	6.60	4.80	38	18.80	16.05	16.20	14.40
16	8.00	7.25	7.40	5.60	40	17.60	16.85	17.00	15.20
18	8.80	8.05	8.20	6.40	50	21.60	20.85	21.00	19.20
20	9.60	8.85	9.00	7.20	60	25.60	24.85	25.00	23.20
22	10.40	9.65	9.80	8.00	68	28.80	28.05	28.20	26.40
24	11.20	10.45	10.60	8.80	70	29.60	28.85	29.00	27.20
26	12.00	11.25	11.40	9.60	80	33.60	32.85	33.00	31.20
28	12.80	12.05	12.20	10.40	90	37.60	36.85	37.00	35.20
30	13.60	12.85	13.00	11.20	100	41.60	40.85	41.00	39.20
32	14.40	13.65	13.80	12.00					



Mating Drawing (Ref)

**Mating Height Dimension**

P/N(Plug)	P/N(Socket)	Plug Height Dim A1	Mating Height Dim H
BTB-0.8-XXG-415	BTB-0.8-XXG-405	4.15	5.50
BTB-0.8-XXG-565	BTB-0.8-XXG-405	5.65	7.00
BTB-0.8-XXG-470	BTB-0.8-XXG-405	4.70	6.15

**Order Information:**

L-KLS1-B0408-405MXX-T3R

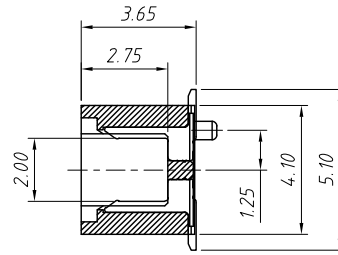
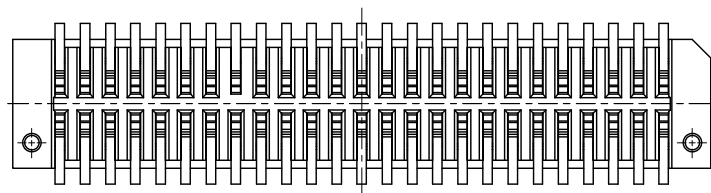
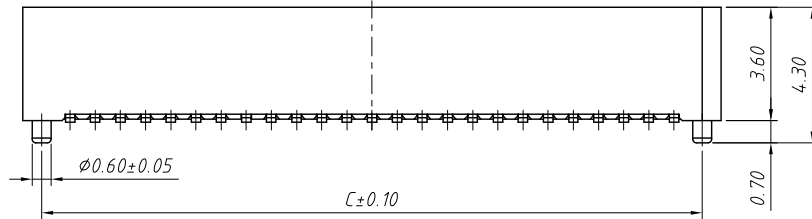
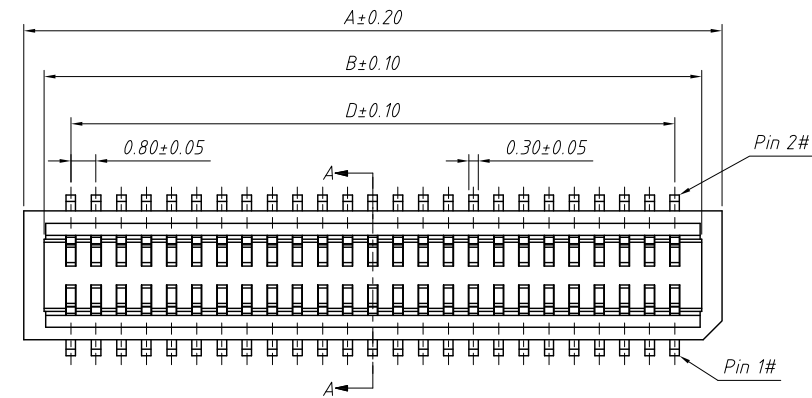
- L: RoHS
- Board To Board
- Pitch-0.80mm
- Height-4.05mm
- Type:M-Male
- XX-No. Of Contact
- Installation mode:
- T=SMD Without Post, T3=SMD With Post
- Packing:R=Reel T=Tube

ANGLE TOLERANCE	PROJECTION	Description:
±3°		0.8mm Board To Board Socket 4.05mm Height
GENERAL TOLERANCE	UNITS	mm
x.x ±0.30	SHEET SIZE	A4
x.xx ±0.20	Draw:	Daniel 2020-11-11
x.xxx ±0.10	Check:	Daniel 2020-11-11

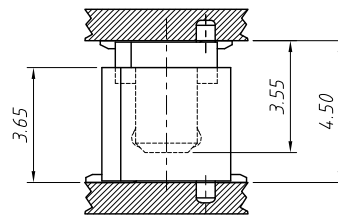


NingBo KLS ELECTRONIC CO.,L TD.

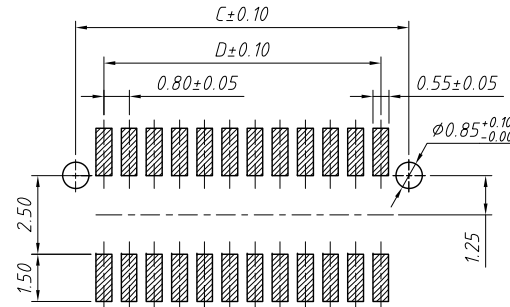
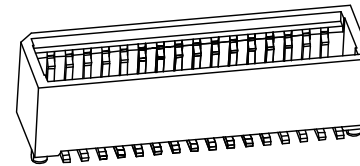
RoHS Compliance



Section: A-A



Mating Drawing (Ref)



Recommended PCB Layout

**Material and Plated**

- 1.Housing:High Temp Plastic,(LCP UL94V-0)
- 2.Contact:Phosphor Bronze
- 3.Plated:Gold Plated

**Specifications:**

- 1.Current Rating:0.5A AC/DC
- 2.Voltage Rating:100V AC/DC
- 3.Contact Resistance:40mΩ. max.
- 4.Insulation Resistance:100MΩ. min.
- 5.Withstanding Voltage:500V AC for one minute
- 6.Operating Temperature Range:-40°C to + 105°C

**Mating Height Dimension**

P/N Plug	P/N Socket	Mating Height
B0408-355M	B0408-365F	4.50

**Order Information:**

L-KLS1-B0408-365FXX-T3R

- L: RoHS
- Board To Board
- Pitch-0.80mm
- Height-3.65mm
- Type:F-Female
- XX-No. Of Contact
- Installation mode:
- T=SMD Without Post, T3=SMD With Post
- Packing:R=Reel T=Tube

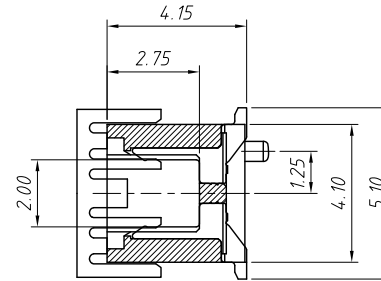
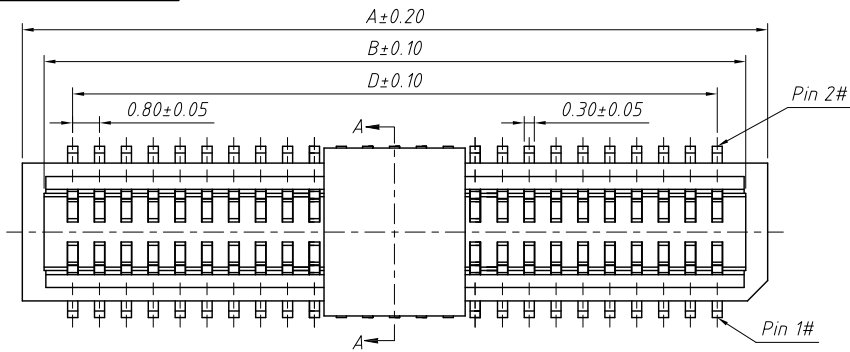
Circuit	A	B	C	D	Circuit	A	B	C	D
10	6.20	4.90	5.00	3.20	34	15.80	14.50	14.60	12.80
12	7.00	5.70	5.80	4.00	36	16.60	15.30	15.40	13.60
14	7.80	6.50	6.60	4.80	38	17.40	16.10	16.20	14.40
16	8.60	7.30	7.40	5.60	40	18.20	16.90	17.00	15.20
18	9.40	8.10	8.20	6.40	50	22.20	20.90	21.00	19.20
20	10.20	8.90	9.00	7.20	60	26.20	24.90	25.00	23.20
22	11.00	9.70	9.80	8.00	68	29.40	28.10	28.20	26.40
24	11.80	10.50	10.60	8.80	70	30.20	28.90	29.00	27.20
26	12.60	11.30	11.40	9.60	80	34.20	32.90	33.00	31.20
28	13.40	12.10	12.20	10.40	90	38.20	36.90	37.00	35.20
30	14.20	12.90	13.00	11.20	100	42.20	40.90	41.00	39.20
32	15.00	13.70	13.80	12.00					

ANGLE TOLERANCE	PROJECTION	Description:
±3°		Pitch 0.8mm Board to Board Connector H4.50~7.50mm
GENERAL TOLERANCE	UNITS	mm
x.x ±0.30	SHEET SIZE	A4
x.xx ±0.20	Draw:	Daniel 2020-11-11
x.xxx ±0.10	Check:	Daniel 2020-11-11



NingBo KLS ELECTRONIC CO.,L TD.

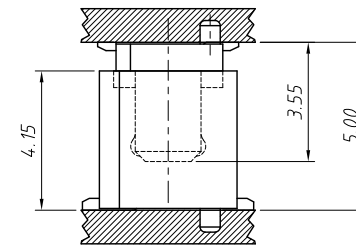
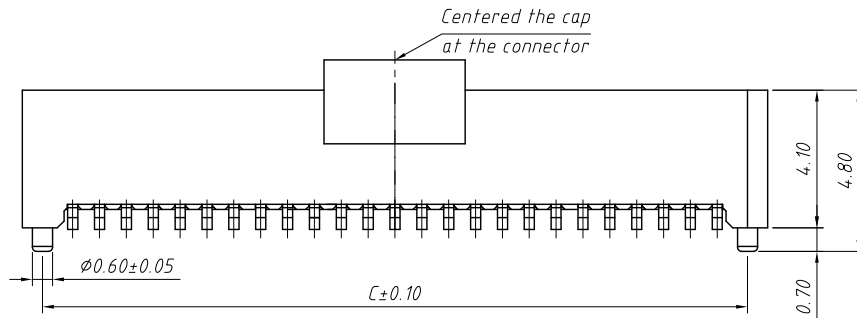
RoHS Compliance



Section: A-A

- Material and Plated**
- 1.Housing:High Temp Plastic,(LCP UL94V-0)
  - 2.Contact:Phosphor Bronze
  - 3.Plated:Gold Plated
  - 4.Package:800PCS/Reel

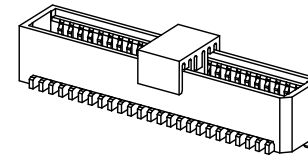
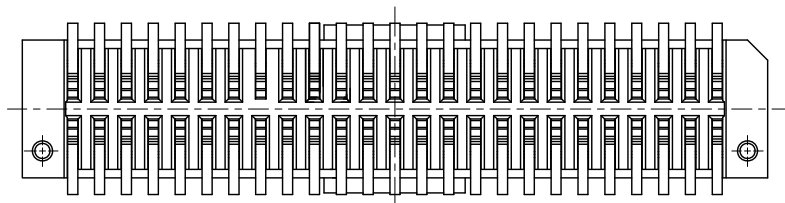
- Specifications:**
- 1.Current Rating:0.5A AC/DC
  - 2.Voltage Rating:100V AC/DC
  - 3.Contact Resistance:40mΩ. max.
  - 4.Insulation Resistance:100MΩ. min.
  - 5.Withstanding Voltage:500V AC for one minute
  - 6.Operating Temperature Range:-40°C to + 105°C



Mating Drawing (Ref)

Mating Height Dimension

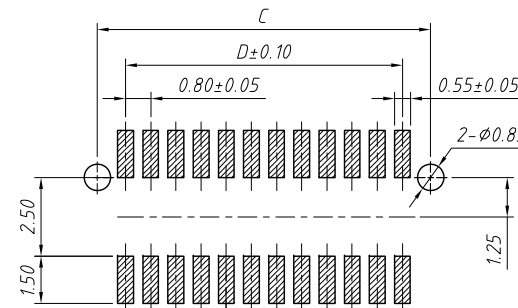
P/N Plug	P/N Socket	Matting Height
B0408-355M	B0408-415F	5.00
B0408-405M		5.50



Order Information:

L-KLS1-B0408-415FXX-T3R

- L: RoHS
- Board To Board
- Pitch-0.80mm
- Height-4.15mm
- Type-F-Female
- XX-No. Of Contact
- Installation mode:
- T=SMD Without Post, T3=SMD With Post
- Packing:R=Reel T-Tube



Recommended PCB Layout

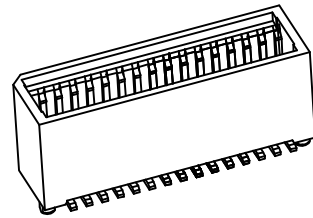
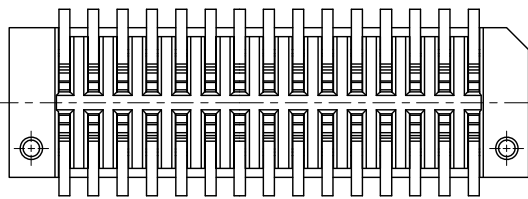
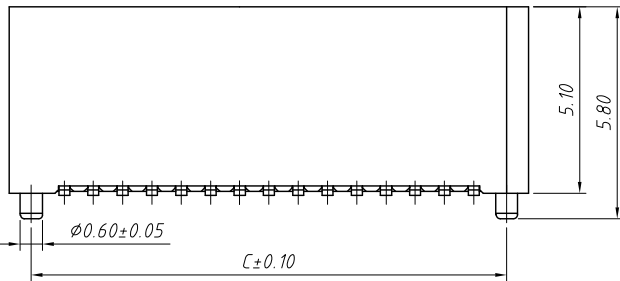
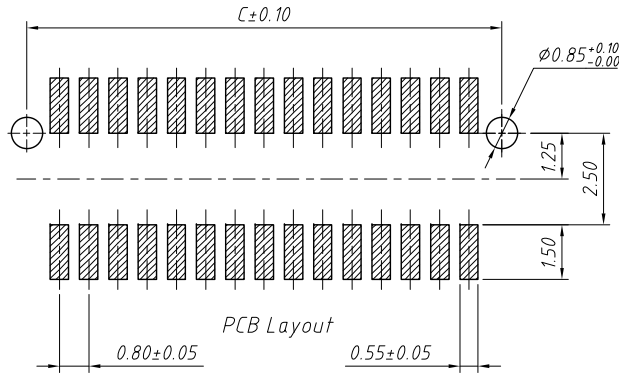
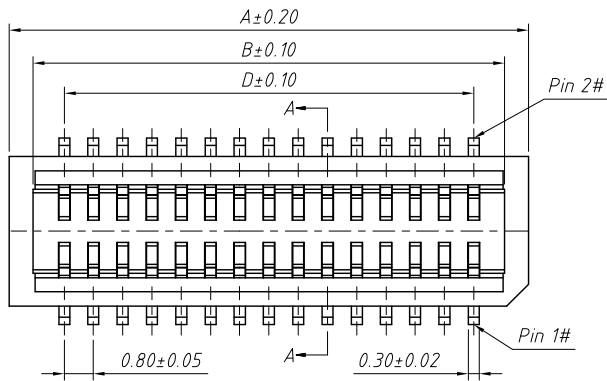
Circuit	A	B	C	D	Circuit	A	B	C	D
10	6.20	4.90	5.00	3.20	34	15.80	14.50	14.60	12.80
12	7.00	5.70	5.80	4.00	36	16.60	15.30	15.40	13.60
14	7.80	6.50	6.60	4.80	38	17.40	16.10	16.20	14.40
16	8.60	7.30	7.40	5.60	40	18.20	16.90	17.00	15.20
18	9.40	8.10	8.20	6.40	50	22.20	20.90	21.00	19.20
20	10.20	8.90	9.00	7.20	60	26.20	24.90	25.00	23.20
22	11.00	9.70	9.80	8.00	68	29.40	28.10	28.20	26.40
24	11.80	10.50	10.60	8.80	70	30.20	28.90	29.00	27.20
26	12.60	11.30	11.40	9.60	80	34.20	32.90	33.00	31.20
28	13.40	12.10	12.20	10.40	90	38.20	36.90	37.00	35.20
30	14.20	12.90	13.00	11.20	100	42.20	40.90	41.00	39.20
32	15.00	13.70	13.80	12.00					

ANGLE TOLERANCE	PROJECTION	Description:
±3°		0.8mm Board To Board Plug 4.15mm Height
GENERAL TOLERANCE	UNITS	mm
x.x ±0.30	SHEET SIZE	A4
x.xx ±0.20	Draw:	Daniel 2020-11-11
x.xxx ±0.10	Check:	Daniel 2020-11-11



NingBo KLS ELECTRONIC CO.,L TD.

RoHS Compliance



Circuit	A	B	C	D	Circuit	A	B	C	D
10	6.20	4.90	5.00	3.20	34	15.80	14.50	14.60	12.80
12	7.00	5.70	5.80	4.00	36	16.60	15.30	15.40	13.60
14	7.80	6.50	6.60	4.80	38	17.40	16.10	16.20	14.40
16	8.60	7.30	7.40	5.60	40	18.20	16.90	17.00	15.20
18	9.40	8.10	8.20	6.40	50	22.20	20.90	21.00	19.20
20	10.20	8.90	9.00	7.20	60	26.20	24.90	25.00	23.20
22	11.00	9.70	9.80	8.00	68	29.40	28.10	28.20	26.40
24	11.80	10.50	10.60	8.80	70	30.20	28.90	29.00	27.20
26	12.60	11.30	11.40	9.60	80	34.20	32.90	33.00	31.20
28	13.40	12.10	12.20	10.40	90	38.20	36.90	37.00	35.20
30	14.20	12.90	13.00	11.20	100	42.20	40.90	41.00	39.20
32	15.00	13.70	13.80	12.00					

**Material and Plated**

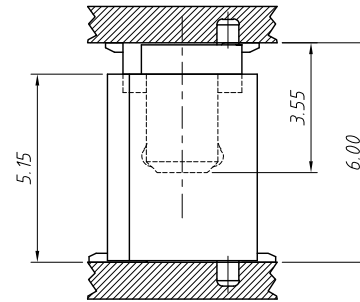
- 1.Housing:High Temp Plastic,(Nylon 9T UL94V-0)
- 2.Contact:Phosphor Bronze
- 3.Plated:Gold Plated

**Specifications:**

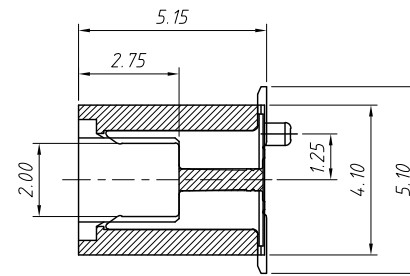
- 1.Current Rating:0.5A AC/DC
- 2.Voltage Rating:100V AC/DC
- 3.Contact Resistance:40mΩ. max.
- 4.Insulation Resistance:100MΩ. min.
- 5.Withstanding Voltage:500V AC for one minute
- 6.Operating Temperature Range:-40°C to + 105°C

**Mating Height Dimension**

P/N Plug	P/N Socket	Matting Height
B0408-355M	B0408-515F	6.00



Mating Drawing (Ref)



Section:A-A

**Order Information:**

L-KLS1-B0408-515FXX-T3R

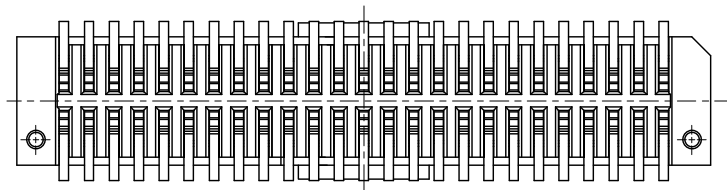
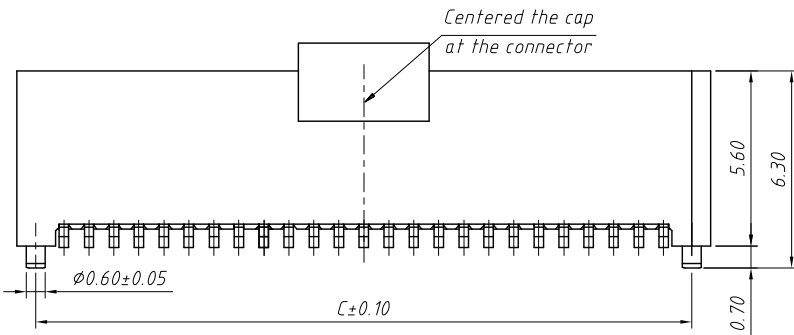
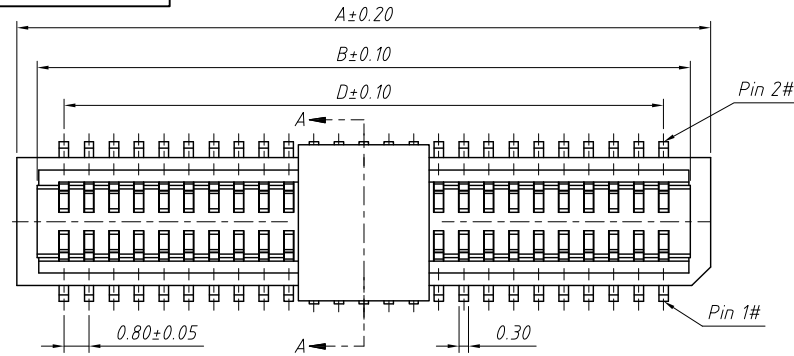
- L: RoHS
- Board To Board
- Pitch-0.80mm
- Height-5.15mm
- Type:F-Female
- XX-No. Of Contact
- Installation mode:
- T=SMD Without Post, T3=SMD With Post
- Packing:R=Reel T=Tube

ANGLE TOLERANCE	PROJECTION	Description:
±3°		0.8mm Board To Board Plug 5.15mm Height
GENERAL TOLERANCE	UNITS	mm
x.x	±0.30	SHEET SIZE A4
x.xx	±0.20	Draw: Daniel 2020-11-11
x.xxx	±0.10	Check: Daniel 2020-11-11

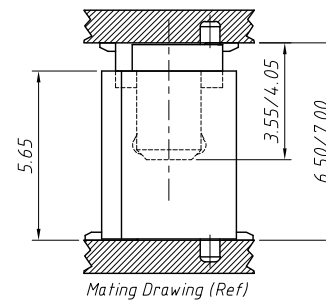
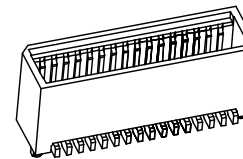
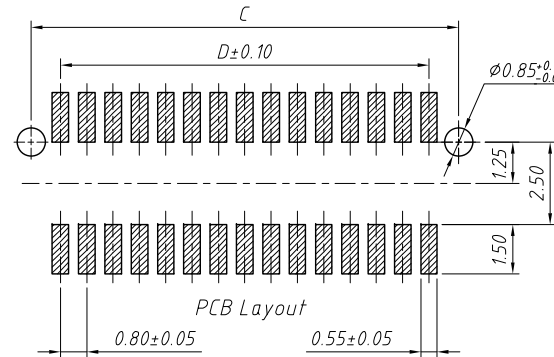
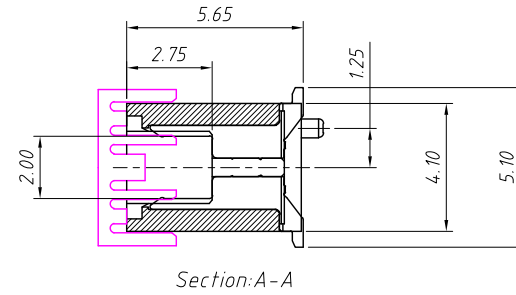


NingBo KLS ELECTRONIC CO.,L TD.

RoHS Compliance



Circuit	A	B	C	D	Circuit	A	B	C	D
10	6.20	4.90	5.00	3.20	34	15.80	14.50	14.60	12.80
12	7.00	5.70	5.80	4.00	36	16.60	15.30	15.40	13.60
14	7.80	6.50	6.60	4.80	38	17.40	16.10	16.20	14.40
16	8.60	7.30	7.40	5.60	40	18.20	16.90	17.00	15.20
18	9.40	8.10	8.20	6.40	50	22.20	20.90	21.00	19.20
20	10.20	8.90	9.00	7.20	60	26.20	24.90	25.00	23.20
22	11.00	9.70	9.80	8.00	68	29.40	28.10	28.20	26.40
24	11.80	10.50	10.60	8.80	70	30.20	28.90	29.00	27.20
26	12.60	11.30	11.40	9.60	80	34.20	32.90	33.00	31.20
28	13.40	12.10	12.20	10.40	90	38.20	36.90	37.00	35.20
30	14.20	12.90	13.00	11.20	100	42.20	40.90	41.00	39.20
32	15.00	13.70	13.80	12.00					



- Material and Plated**
- 1.Housing:High Temp Plastic,(LCP UL94V-0)
  - 2.Contact:Phosphor Bronze
  - 3.Plated:Gold Plated
  - 4.Package:700pcs/Reel

- Specifications:**
- 1.Current Rating:0.5A AC/DC
  - 2.Voltage Rating:100V AC/DC
  - 3.Contact Resistance:40mΩ. max.
  - 4.Insulation Resistance:100MΩ. min.
  - 5.Withstanding Voltage:500V AC for one minute
  - 6.Operating Temperature Range:-40°C to + 105°C

Mating Height Dimension

P/N Plug	P/N Socket	Matting Height
B0408-355M	B0408-565F	6.50
B0408-405M		7.50

Order Information:

L-KLS1-B0408-565FXX-T3R

- L: RoHS
- Board To Board
- Pitch-0.80mm
- Height-5.65mm
- Type-F-Female
- XX-No. Of Contact
- Installation mode:
- T=SMD Without Post, T3=SMD With Post
- Packing:R=Reel T-Tube

ANGLE TOLERANCE	PROJECTION	Description:
±3°		0.8mm Board To Board Plug 5.65mm Height
GENERAL TOLERANCE	UNITS	mm
x.x ±0.30	SHEET SIZE	A4
x.xx ±0.20	Draw:	Daniel 2020-11-11
x.xxx ±0.10	Check:	Daniel 2020-11-11



NingBo KLS ELECTRONIC CO.,L TD.