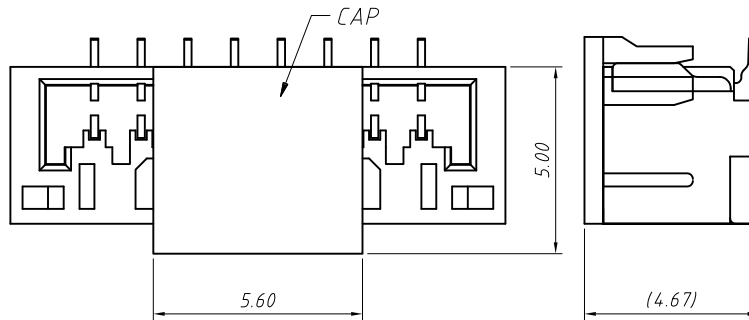
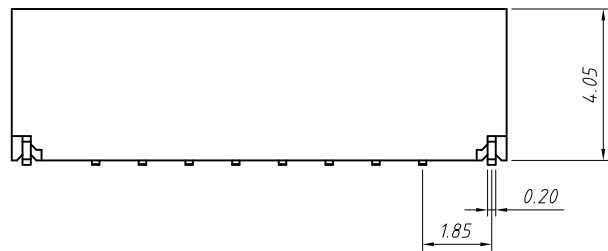
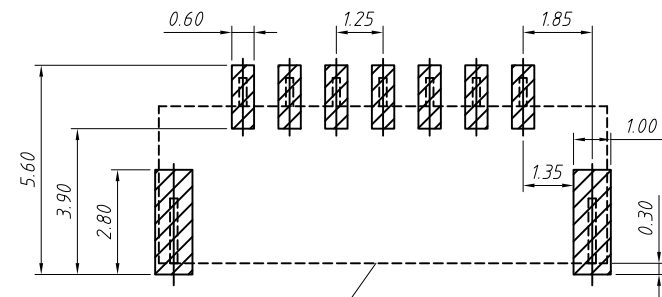


8-12P Have this chuck
2-7P No chuck



WITH CAP VIEW



Base profile

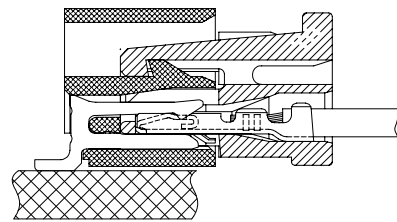
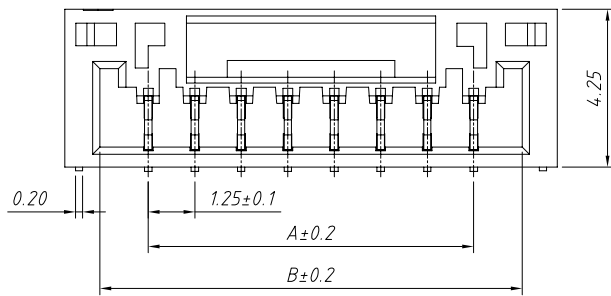
Recommended PCB Layout

Material:
Insulator:PA6T UL 94V-0
Contact:Copper alloy
Finish: Tin plated

Electrical Specification:
Poles: 02 to 12
Current rating:1A AC, DC
Voltage rating:50V AC,DC
Contact resistance:30mΩ Max
Insulation resistance:100MΩ/min.
Withstanding voltage:500V AC/ minute.
Temperature Range:-25°C~ +85°C

Part NO	Dimensions(mm)			
	A	B	C	D
02	1.25	5.75	2.20	3.75
03	2.50	7.00	3.30	5.00
04	3.75	8.25	4.55	6.25
05	5.00	9.50	4.55	7.50
06	6.25	10.75	6.55	8.75
07	7.50	12.00	6.55	10.00
08	8.75	13.25	6.55	11.25
09	10.00	14.50	6.55	12.50
10	11.25	15.75	8.55	13.75
11	12.50	17.00	8.55	15.00
12	13.75	18.25	8.55	16.25

GENERAL TOLERANCE	PROJECTION		Description:
.X ±0.30	UNITS	mm	1.25mm Crimp Style Connectors
.X ±0.20	SCALE	1:1	
.XX ±0.10	Draw by:	Jenny	
ANGLE TOLERANCE	Check by:		KLS P/N: L-KLS1-XL8-1.25-XX-VM
.X ±5°	Date	2018-03-01	NingBo KLS ELECTRONIC CO.,L TD.
.X ±3°	SHEET	1 OF 1	
.XX ±2°			



Material:

1.Wafer:PA9T UL 94V-0,Beige

2.Contact:Phosphor Bronze,

Nickel plated 30U,again Tin plated 80U

3.Fitting Nail:Phosphor Bronze,

Nickel plated 30U,again Tin plated 80U

Electrical Specification:

Poles: 02 to 09

Voltage Rating:150V AC/DC

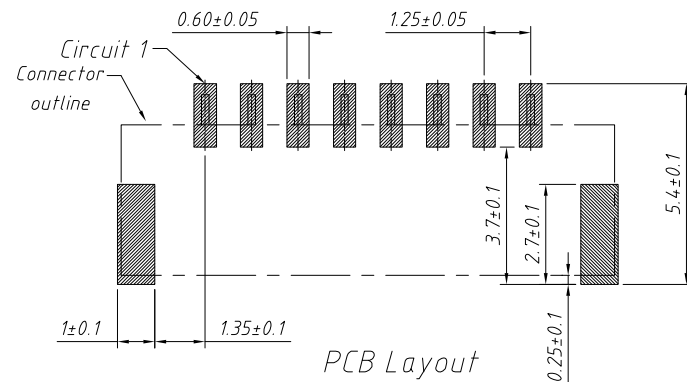
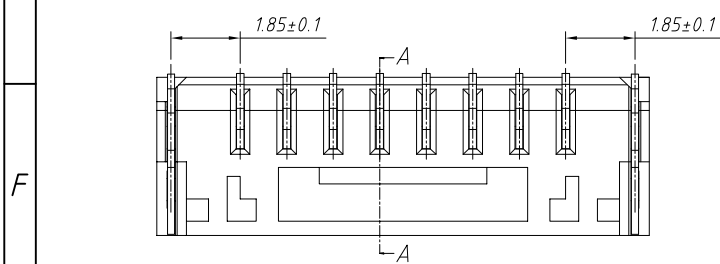
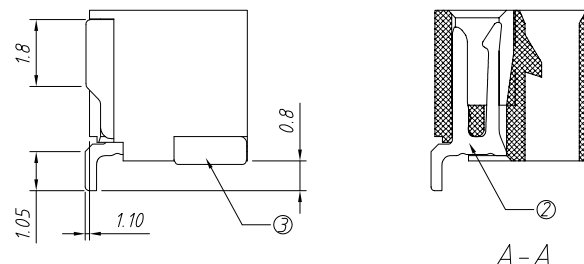
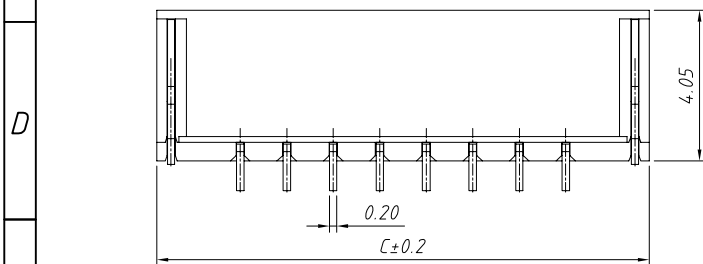
Current Rating:1A AC/DC

Contact resistance:30mΩ Max

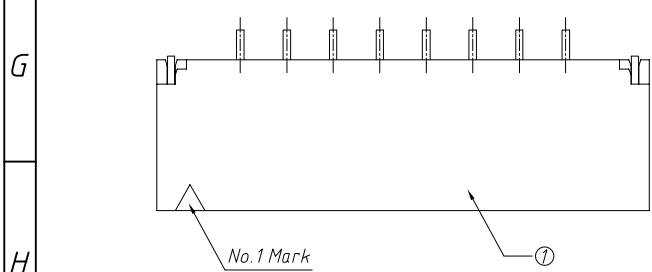
Insulation resistance:100MΩ Min

Withstand Voltage:500V AC/minute

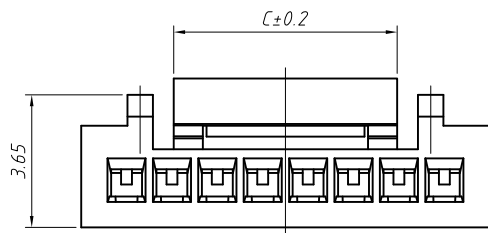
Temperature Range:-25℃~ +85℃



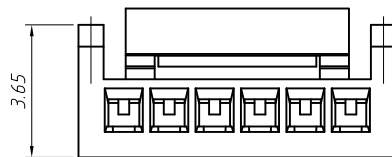
Circuit	Dimensions(mm)		
	A	B	C
02	1.25	3.85	5.75
03	2.50	5.10	7.00
04	3.75	6.35	8.25
05	5.00	7.60	9.50
06	6.25	8.85	10.75
07	7.50	10.10	12.00
08	8.75	11.35	13.25
09	10.00	12.60	14.50



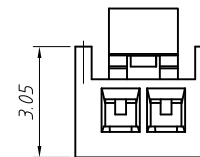
GENERAL TOLERANCE	PROJECTION		Description:
X. ±0.30	UNITS	mm	1.25mm Crimp Style Connectors
.X ±0.20	SCALE	1:1	
.XX ±0.10	Draw by:	Jenny	
ANGLE TOLERANCE	Check by:		KLS P/N: L-KLS1-XL8-1.25-XX-RM
X. ±5°	Date	2018-03-01	NingBo KLS ELECTRONIC CO.,L TD.
.X ±3°	SHEET	1 OF 1	
.XX ±2°			



7~15P



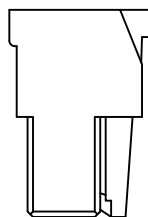
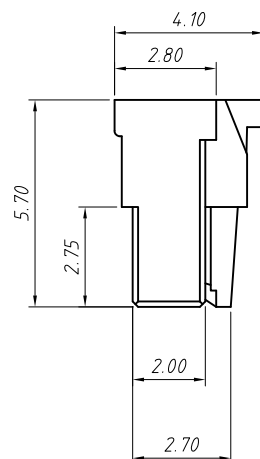
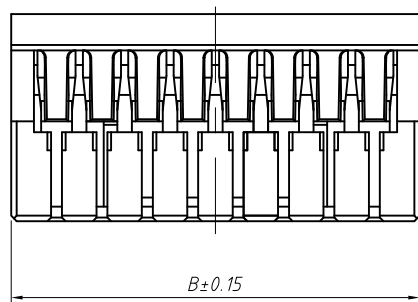
5~6P



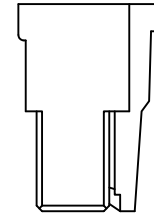
2~4P

Material:
Insulator:Nylon66 UL 94 V-0

Electrical Specification:
Poles: 02 to 15
Current rating:1A AC, DC
Voltage rating:50V AC,DC
Contact resistance:30mΩ Max
Insulation resistance:100MΩ/min.
Withstanding voltage:500V AC/ minute.
Temperature Range:-25°C~ +85°C

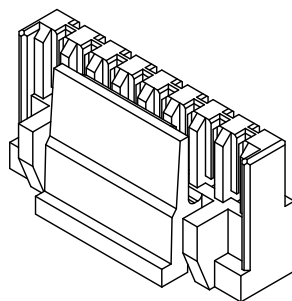
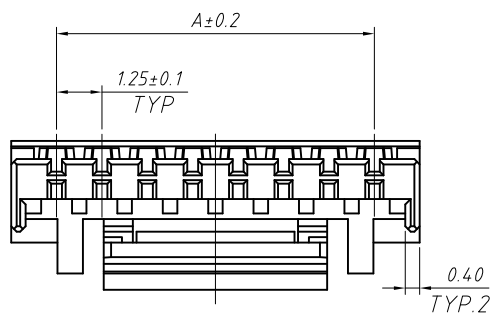


5~6P

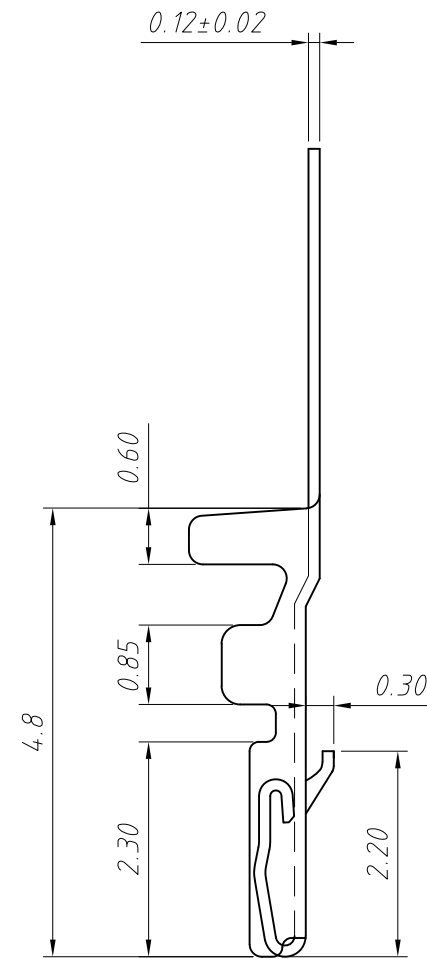
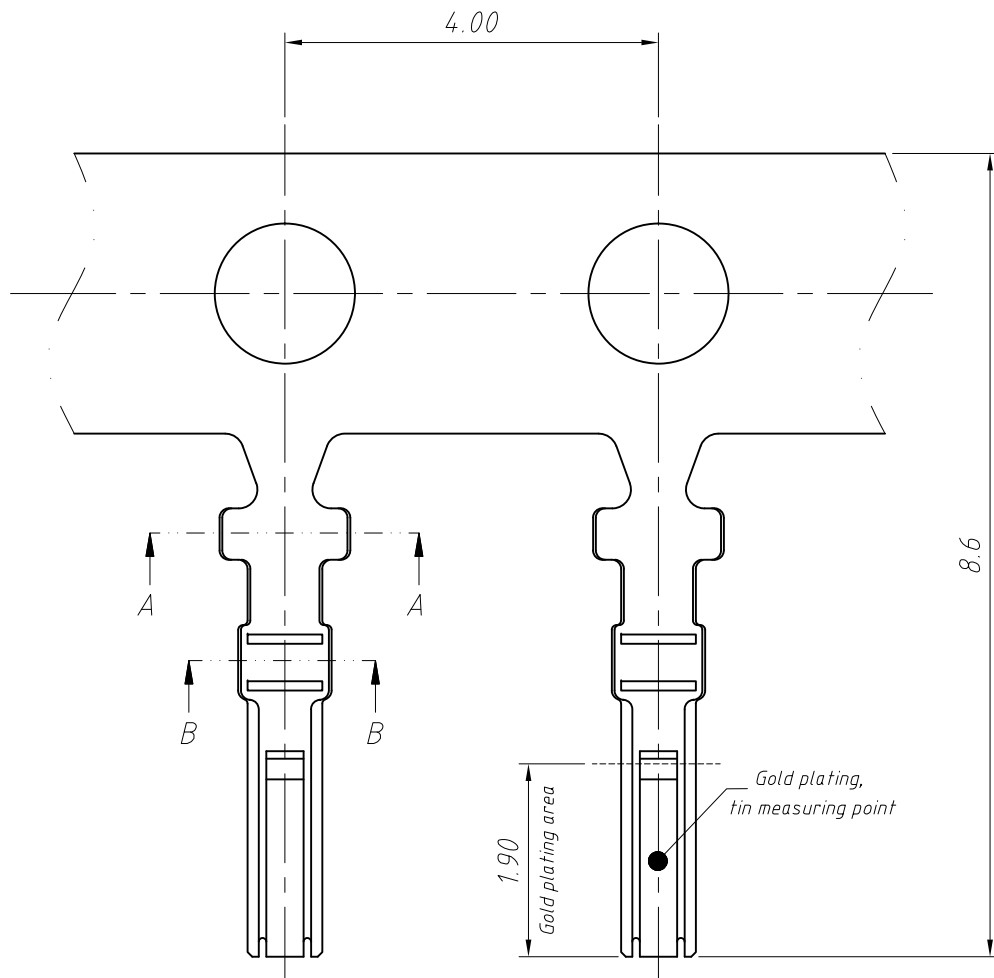


2~4P

Part NO	Dimensions(mm)		
	A	B	C
02	1.25	3.85	1.90
03	2.50	5.10	2.90
04	3.75	6.35	4.15
05	5.00	7.50	4.15
06	6.25	8.75	6.15
07	7.50	10.00	6.15
08	8.75	11.25	6.15
09	10.00	12.50	6.15
10	11.25	13.75	8.10
11	12.50	15.00	8.10
12	13.75	16.25	8.10
13	15.00	17.50	8.10
14	16.25	18.75	8.10
15	17.50	20.00	8.10

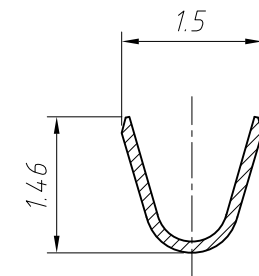


GENERAL TOLERANCE	PROJECTION		Description:
X. ±0.30	UNITS	mm	1.25mm Crimp Style Connectors
.X ±0.20	SCALE	1:1	
.XX ±0.10	Draw by:	Jenny	
ANGLE TOLERANCE	Check by:		KLS P/N: L-KLS1-XL8-1.25-XX-H
X. ±5°	Date	2018-03-01	NingBo KLS ELECTRONIC CO.,L TD.
.X ±3°	SHEET	1 OF 1	
.XX ±2°			

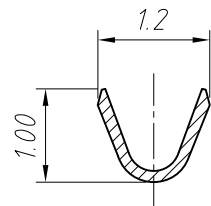
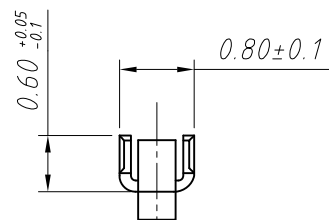


Material:
 Terminal: Phosphor Bronze
 Applicable wires:
 Conductor size: AWG#26 ~ #32
 Insulation O.D. : 1.0mm Max.
 Finish: Tin plated or Gold plated contact area or Gold plated 40u"
 Q'TY/Reel: 20,000PCS

Electrical Specification:
 Current rating: 1A AC, DC
 Voltage rating: 50V AC, DC
 Contact resistance: 30mΩ Max
 Insulation resistance: 100MΩ/min.
 Withstanding voltage: 500V AC/ minute.
 Temperature Range: -25°C ~ +85°C



Section: A-A



Section: B-B

GENERAL TOLERANCE	PROJECTION		Description:
X. ±0.30	UNITS	mm	1.25mm Connectors Terminal
.X ±0.20	SCALE	1:1	
.XX ±0.10	Draw by:	Jenny	
ANGLE TOLERANCE	Check by:		KLS P/N: L-KLS1-XL8-1.25-T
X. ±5°	Date	2018-03-01	NingBo KLS ELECTRONIC CO.,L TD.
.X ±3°	SHEET	1 OF 1	
.XX ±2°			