



C10AM

C10AM is an LTE CAT 1/2G compatible Smart Cellular Modules based on 3GPP release 9, that comes with an integrated eSIM. The integrated eSIM coupled with Cavli Hubble Global Connectivity ensures the module can be deployed across the globe, making it an ideal solution for logistics, automotive, vehicle tracking systems and more.

Reimagining Cellular IoT Solutions

THE CAVLI ADVANTAGE

Integrated eSIM & global connectivity through Cavli Hubble™
Intelligent/Automatic local eSIM provisioning
Advanced firmware installation/update over-the-air
PAYG Global Data Subscription Model

FEATURES

Compatibility with existing LTE networks
Optimized for higher bandwidth including voice
Paired for devices in mobility
Perfect for localized applications such as -
Security and Surveillance, Point of Sales, Health Monitoring,-
Fleet Management and Asset Tracking

TECHNICAL SPECIFICATIONS

CAT-1: B1/B3/B5/B8/B39/B40/B41
EGPRS: 900/1800
LTE: 3GPP E-UTRA Release 9 CAT 1
CPU: ARM Cortex-R5 with 624MHz clock with 32K I-Cache,32K D
Cache and 64KB TCM 32KB ROM and 64KB on-chip SRAM for application usage

DATA-CONNECTIVITY

LTE CAT 1: 5Mbps (UL), 10Mbps (DL)
GPRS: 85.6Kbps (UL), 85.6Kbps (DL)
EDGE: 236.8Kbps (UL), 236.8Kbps (DL)

PACKAGING

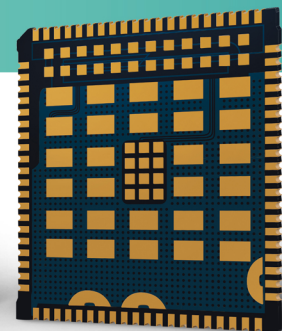
Dimension: 32 x 29 x 2.4 mm, LCC Package

TEMPERATURE RANGE

Normal working temperature: -20°C to +70°C
Limit working temperature: -40°C to +85°C
Storage temperature: -45°C to +90°C

INTERFACES

1.8V/3V SIM Interface
Operating Voltage: 3.4V to 4.2V; Typ 3.7V
1xUSB2.0, 2xUART, 1xUSIM, 3xGPIO, 1xPCM, 1xI2C, 1xSDIO, 2xADC, 1xANT



APPLICABLE REGIONS
Asia-Pacific, EMEA

TECHNICAL HIGHLIGHTS

PARAMETERS	LTE-CAT 1
BANDWIDTH	20 MHz
PEAK DATA RATE	<10 Mbps
UPLINK SPEED	5 Mbps
DOWNLINK SPEED	10 Mbps
LATENCY	10ms
PENETRATION	Excellent
VOICE	VoLTE

APPLICATIONS



Automotive & Logistics



Smart City



Energy & Utilities



Safety & Security



Manufacturing



Agriculture



Health Care/
E- Health



Retail



Smart Home

Cavli Hubble™

Cavli Hubble™ is our proprietary Connectivity as a Service (Caas) cloud platform for global cellular data subscription management, module & modem management, enabling businesses and industries to build and deploy easily scalable global wireless IoT solutions.

