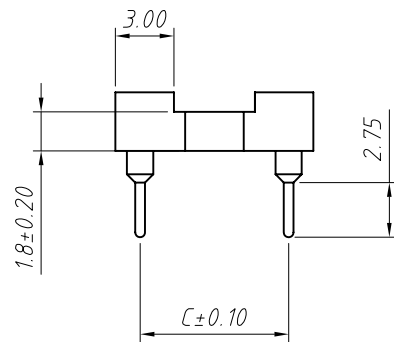


PCB LAYOUT

Material:  
 Housing: PBT UL 94 V<sup>0</sup>  
 Contacts: Beryllium copper or Phosphor Bronze  
 Plating: Au 2u" or Sn over 50u" nickel

Electrical Characteristics:  
 Current Rating: 3.0 AMP  
 Insulator Resistance: 1000M $\Omega$  min.  
 Contact Resistance: 20m $\Omega$  max.  
 Operating Temperature: -40°C ~ +105°C

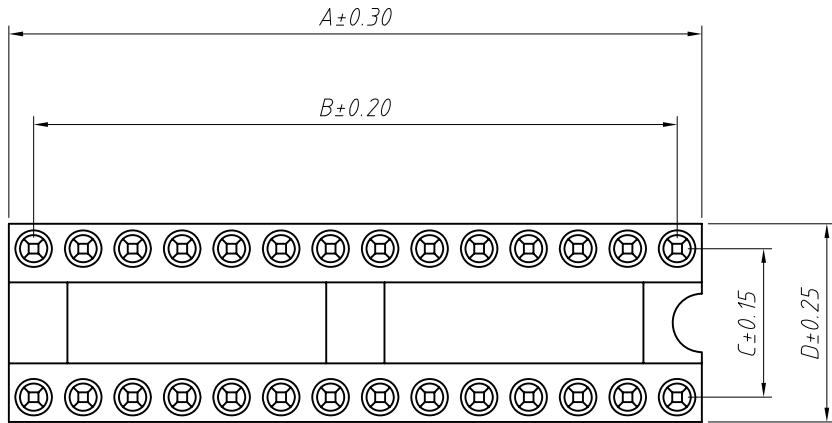


Pins	DIM A	DIM B	DIM C	DIM D
06	7.62	5.08	7.62	10.16
08	10.16	7.62	7.62	10.16
10	12.70	10.16	7.62	10.16
14	17.78	15.24	7.62	10.16
16	20.32	17.78	7.62	10.16
18	22.86	20.32	7.62	10.16
20	25.40	22.86	7.62	10.16
24	30.48	27.94	7.62	10.16
28	35.56	33.02	7.62	10.16
20	25.40	22.86	10.16	12.70
22	27.94	25.40	10.16	12.70
24	30.48	27.94	10.16	12.70
28	35.56	33.02	10.16	12.70
24	30.48	27.94	15.24	17.78
28	35.56	33.02	15.24	17.78
32	40.64	38.10	10.16	12.70
32	40.64	38.10	15.24	17.78
36	45.72	43.18	15.24	17.78
40	50.80	48.26	15.24	17.78
42	53.34	50.80	15.24	17.78
48	60.96	58.42	15.24	17.78
50	63.50	60.96	15.24	17.78
52	66.04	63.50	15.24	17.78
50	63.50	60.96	22.86	25.40
52	66.04	63.50	22.86	25.40
64	81.28	78.74	22.86	25.40

Order Information:  
 L-KLS1-217-XX-Y-1

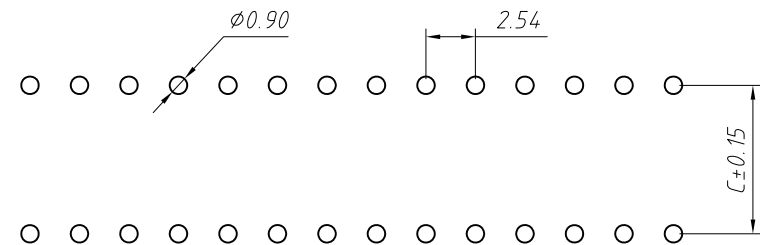
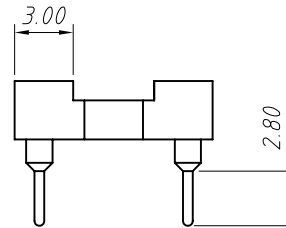
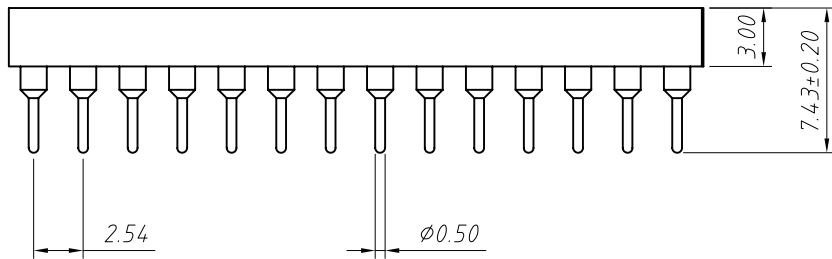
L: RoHS  
 IC Socket  
 XX-No. of 06 ~ 64pin  
 Material:  
 Y-Imported Beryllium copper  
 Z-Domestic Phosphor Bronze  
 C Size:  
 1=7.62mm 2=15.24mm  
 3=10.16mm 4=22.86mm

GENERAL TOLERANCE	PROJECTION		Description:
X. ±0.50	UNITS	mm	2.54mm Pitch IC Socket Connector
.X ±0.25	SCALE	1:1	
.XX ±0.10	Draw by:	Jenny	KLS P/N: L-KLS1-217-XX-Y-1
ANGLE TOLERANCE	Check by:		NingBo KLS ELECTRONIC CO.,L TD.
X. ±5°	Date	2018-03-01	
.X ±3°	SHEET	1 OF 1	
.XX ±2°			



Material:  
Housing: PBT/PPS, UL 94V-0  
Contacts: Beryllium copper or Phosphor Bronze  
Plating: Au 2u" or Sn over 50u" nickel

Electrical Characteristics:  
Current Rating: 3.0 AMP  
Insulator Resistance: 1000MΩ min.  
Contact Resistance: 20mΩ max.  
Operating Temperature: -40°C ~ +105°C



PCB LAYOUT

Pins	DIM A	DIM B	DIM C	DIM D
06	7.62	5.08	7.62	10.16
08	10.16	7.62	7.62	10.16
10	12.70	10.16	7.62	10.16
14	17.78	15.24	7.62	10.16
16	20.32	17.78	7.62	10.16
18	22.86	20.32	7.62	10.16
20	25.40	22.86	7.62	10.16
24	30.48	27.94	7.62	10.16
28	35.56	33.02	7.62	10.16
20	25.40	22.86	10.16	12.70
22	27.94	25.40	10.16	12.70
24	30.48	27.94	10.16	12.70
28	35.56	33.02	10.16	12.70
24	30.48	27.94	15.24	17.78
28	35.56	33.02	15.24	17.78
32	40.64	38.10	10.16	12.70
32	40.64	38.10	15.24	17.78
36	45.72	43.18	15.24	17.78
40	50.80	48.26	15.24	17.78
42	53.34	50.80	15.24	17.78
48	60.96	58.42	15.24	17.78
50	63.50	60.96	15.24	17.78
52	66.04	63.50	15.24	17.78
50	63.50	60.96	22.86	25.40
52	66.04	63.50	22.86	25.40
64	81.28	78.74	22.86	25.40

Order Information:

L-KLS1-217-XX-Y-1-G3-PC

L: RoHS

XX=No. of 06~64 pins

Material:

Y-Imported Beryllium copper

Z-Domestic Phosphor Bronze

Row spacing Code:

1=7.62mm 2=15.24mm

3=10.16mm 4=22.86mm

Plating: Au 3u"

CP=Without Bar

GENERAL TOLERANCE	PROJECTION		Description:
X. ±0.50	UNITS	mm	2.54mm Pitch IC Socket Connector
.X ±0.25	SCALE	1:1	
.XX ±0.10	Draw by:	Jenny	
ANGLE TOLERANCE	Check by:		KLS P/N: L-KLS1-217-XX-Y-1-G3-PC
X. ±5°	Date	2018-03-01	NingBo KLS ELECTRONIC CO.,L TD.
.X ±3°	SHEET	1 OF 1	
.XX ±2°			