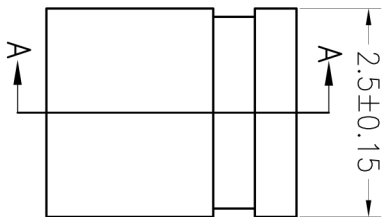
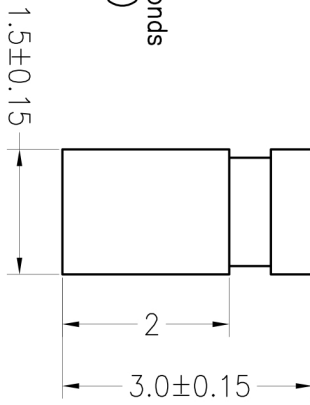


HSE ROHS

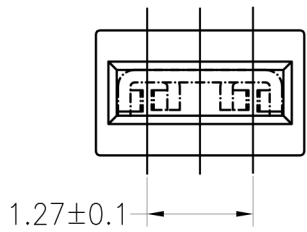
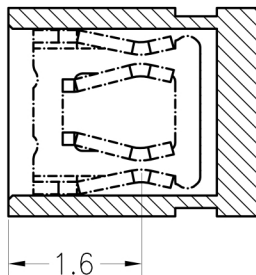
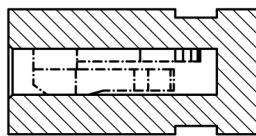
SPECIFICATIONS

Rated Current:1.0AMP
 Contact Resistance:20mΩ Max
 Withstand Voltage:500V AC/DC
 Insulation Resistance:1000MΩ Min
 Operation Temperature:-40°c to +105°c

Contact Material:Phosphor Bronze
 Contact Plating:Au Over Ni
 Insulator Material:Polyester(UL94V-0)
 Standard: PBT
 Max.Processing Temp: 180°C for 30-60 seconds
 (200°C for 10 seconds)



SECTION A-A



OPERATION		DRAW		SCALE		FIT		PART NO.	
X.X	±0.30	YY/Sheng	12.04.18	UNIT	mm	1/1		L-KLS1-203C-C-B-3.0	
X.XX	±0.20	CHECK		SIZE	A4			1.27 Mini Jumper 1Port Colse	
X.XXX	±0.10			SHEET	1/1				
Angle	±3°	APPROVE		PROJ.					
DIM	TOL								
REV	DATE	MODIFICATION DESCRIPTION	CHANGE						
1									
2		NEW DRAWING							
3									
4									
5									
6									
7									
8									
9									



NINGBO KLS ELECTRONIC CO.,LTD.