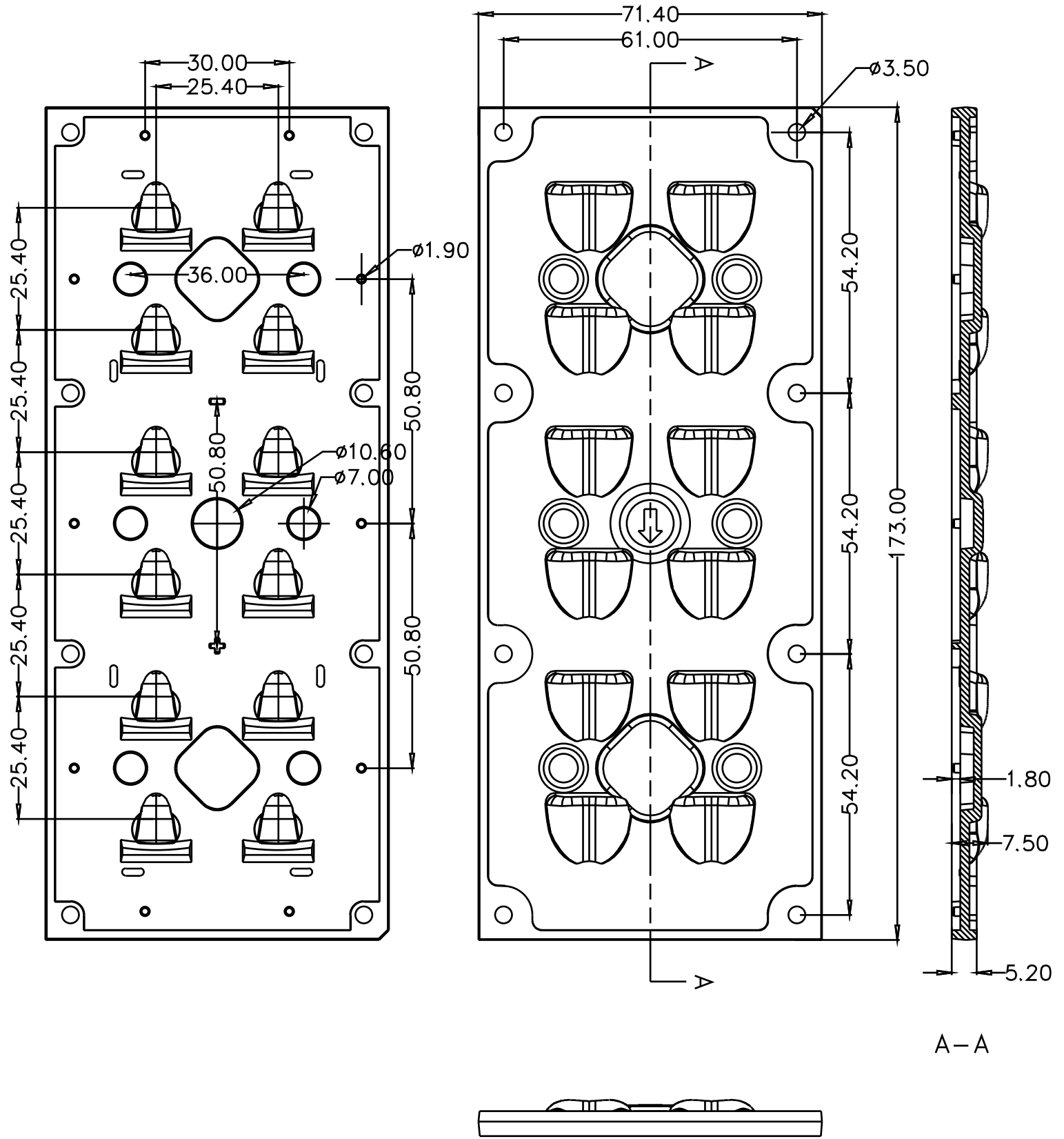


## I LENS229-R17371-PG13555-12H1-NH-S-1

- Product Type: Street Light Lens
- Product Material: PC
- Product Certification: ROHS
- Size: 173.0\*71.4\*9.0mm
- LED: 2835、3030
- Beam Angle(FWHM): Asymmetric 135\*55°
- Application: Street lighting、Tunnel Lamp





DRAWING TITLE		ILENS229-R17371-PG13555-12H1-NH-S-1	
GENERAL TOLERANCES (UNLESS STATED)		THIRD ANGLE PROJECTION	
LINEAR	ANGULAR	MATERIAL	PC
X +/-0.25	X +/-1jã	UNIT	MM
X.X +/-0.20	X.X +/-0.5jã	SIZE	A4
X.XX +/-0.10		SHEET	1/1

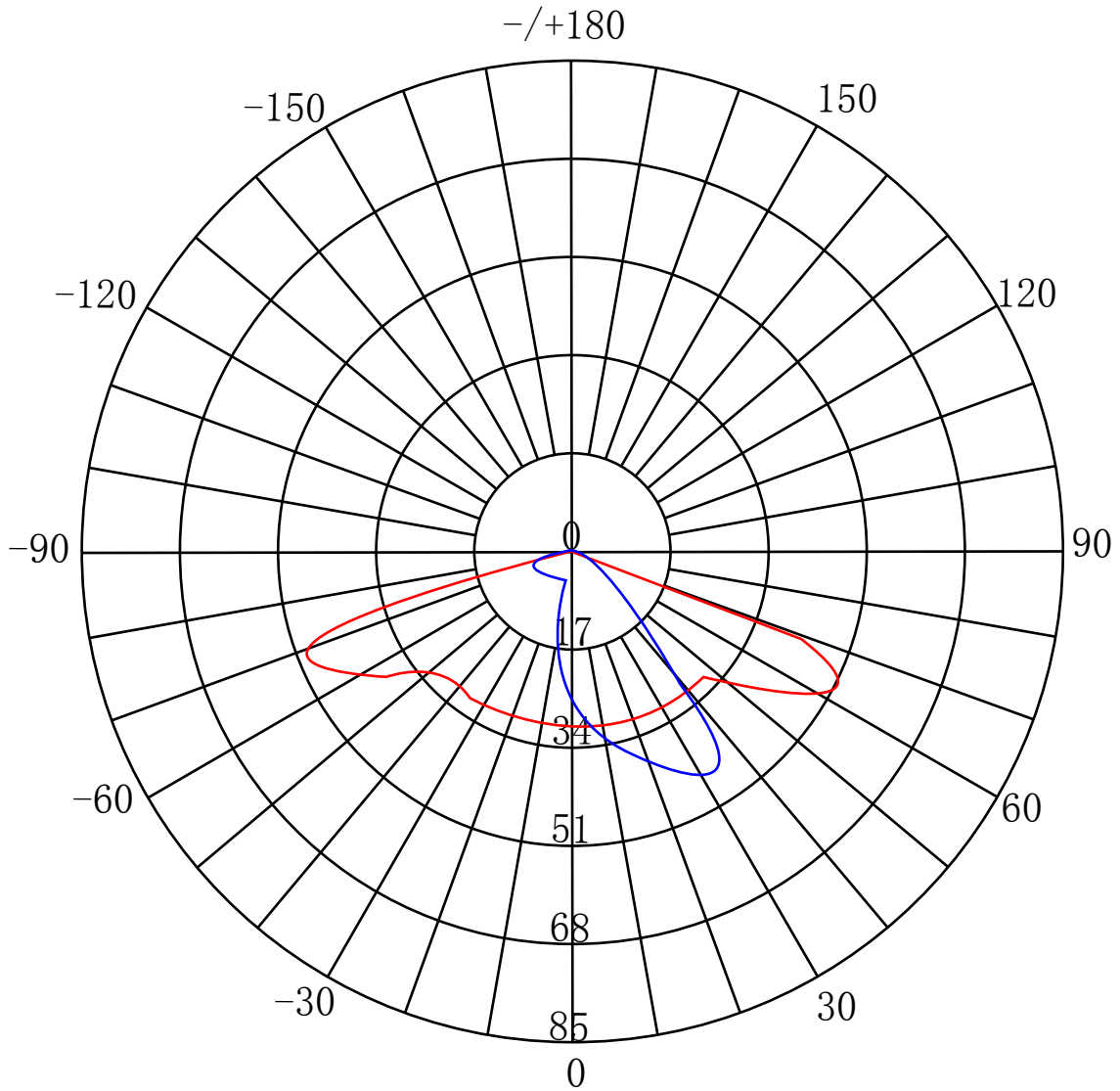
This drawing is the property of ILENSTECH Optoelectronics Co.,Ltd. It may not be reproduced, copied or communicated without a written agreement with ILENSTECH Optoelectronics Co.,Ltd

COLOUR	Clear	SCALE
--------	-------	-------

**ILENSTECH**

Shenzhen ILENSTECH Optoelectronics Co.,Ltd

# Light distribution curve



— CO-C180  
— C90-C270  
—

Unit : cd

## Attention

- Storage: Do not store in dusty place, or expose under corrosive environment.
- Contact: Do not touch the lens surface with bare-hand. Please use gloves to touch the lenses.
- Cleaning: Clean lenses only if necessary. Use only mild soap, water and soft cloth. Do not use any commercial cleaning solvents
- The temperature of the lens in the working environment is controlled at  $-40^{\circ}\text{C} \sim +80^{\circ}\text{C}$ .
- Storage environment requirements, temperature:  $0^{\circ}\text{C} \sim 40^{\circ}\text{C}$  humidity: 30%~95%.
- Before use the lens, don't open the package to avoid dust pollution.
- Avoid direct sunlight to avoid Aging, discoloration, fission and other adverse effects.
- Do not use acidic or alkaline solvents to touch the product to avoid chemical reactions.