

## FDD LTE/TD-LTE/TD-SCDMA/WCDMA/GSM Module

# ME3620



LCC Form Factor



GPS & A-GPS



Rx diversity



LTE FDD & LTE TDD



TD-SCDMA & WCDMA



GSM



LTE FDD: DL 100Mbps / UL 50Mbps



8-wires Industry UART



USB 2.0 High Speed Compliant Interface



Pin-to-Pin with MW3650&MC8635



-30°C ~ 75 °C



Auto suspend & remote wakeup

## For M2M Applications

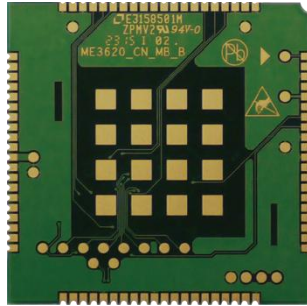
**ME3620** is designed to provide customers with global network coverage on the connectivity of LTE. It delivers 50Mbps-up and 100Mbps-down data rates on LTE FDD networks and can also be fully backward compatible with existing WCDMA and GSM networks.

Rx diversity which allows the end-device to be equipped with two distinct cellular antennas improving the quality and reliability of the wireless connectivity.

A rich set of internet protocols (PAP and CHAP used for PPP connections) and abundant functions (GPS/A-GPS, DTMF, TTS, Remote wakeup, MMS, SMS) extend the applicability of the module to a wide range of M2M applications.

ME3620 also allows the integration of automotive and other applications requiring assured extended operating temperature range and mechanical ruggedness within the ever-shrinking space inside electronic bays in trucks, automobiles, and other mobile platforms.





## General Features

- ❑ LCC Form Factor (80 pins)
- ❑ Pin-to-Pin with LCC 30\*30
- ❑ Dimensions: 30mm × 30mm × 2.3mm
- ❑ Weight: About 4.0g
- ❑ Frequency Band :
  - LTE FDD/LTE TDD/WCDMA/TD-SCDMA/GSM
- ❑ GPS & A-GPS(ME3620\_C1B is not included)

## Electrical & Sensitivity

- ❑ Transmit Power:
  - LTE: +23dBm ± 2.7dBm (Power Class 3)
  - WCDMA : 24 +1/-3dBm (Power Class 3)
  - TDSCDMA: 24+1/-3dbm (Power Class2)
  - GSM900: 33 ± 2dBm (Power Class 4)
  - GSM1800: 30 ± 2dBm (Power Class 1)
- ❑ Receiving sensitivity:
  - Rx Diversity
- ❑ Power Supply :
  - 3.4V~4.2V (3.8V is recommended)

## Environmental

- ❑ Operation temperature: -30° C to +75° C
  - Extreme Operating temperature: -40° C to +85° C
- ❑ Storage temperature: -40° C to +85° C
- ❑ Humidity: 5%~ 95%

## ME3620 Serials

PID	Band	Rx Diversity
C1A	1. GSM: B3, B8	1. WCDMA: B1, B8 2. LTE FDD: B1, B3, B7, B8 3. LTE TDD: B38, B39, B40, B41
	2. WCDMA: B1, B8	
	3. TD-SCDMA: B34, B39	
	4. LTE FDD: B1, B3, B7, B8	
	5. LTE TDD: B38, B39, B40, B41	
C1B	1. GSM: B3, B8	Do not support this feature
	2. WCDMA: B1, B8;	
	3. TD-SCDMA: B34, B39;	
	4. LTE FDD: B1, B3;	
	5. TD-LTE: B38, B39, B40, B41;	
J1A	1. WCDMA: B1, B5, B6, B8, B19	1. WCDMA: B1, B5, B6, B8, B19 2. LTE FDD: B1, B3, B5, B8, B9, B18, B19, B21
	2. LTE FDD: B1, B3, B5, B8, B9, B18, B19, B21	
	3. TD-LTE: B38, B39, B40, B41;	
J1B	1. WCDMA: B1, B5, B6, B8, B19	1. WCDMA: B1, B5, B6, B8, B19 2. LTE FDD: B1, B3, B5, B8, B9, B11, B18, B19
	2. LTE FDD: B1, B3, B5, B8, B9, B11, B18, B19	

## Data Features

- ❑ LTE FDD
  - Uplink 50Mbps / Downlink 100 Mbps
- ❑ LTE TDD
  - Uplink 18Mbps / Downlink 61Mbps
- ❑ WCDMA
  - Uplink 5.76Mbps / Downlink 42Mbps
- ❑ TDS
  - Uplink 2.2 Mbps / Downlink 4.2 Mbps
- ❑ EDGE (Multi-slot Class 10)
  - Uplink 236.8 kbps / Downlink 236.8 kbps
- ❑ GPRS (Multi-slot Class 10)
  - Uplink 85.6 kbps / Downlink 85.6 kbps

## SMS Features

- ❑ Support Text and PDU mode
- ❑ Point to point MO and MT
- ❑ SMS Status Report
- ❑ SMS centre address setting
- ❑ Management of SMS

## Interfaces

- ❑ USB 2.0 High speed (480 Mbps)
- ❑ UART1(8-wires)
- ❑ UART2(2-wires)
- ❑ SIM interface (1.8/3.0V)
- ❑ SPI
- ❑ I2C
- ❑ SD interface (C1A support)
- ❑ ADC
- ❑ Antenna (RF PAD for Primary, Diversity and GPS)
- ❑ LED indication
- ❑ Reset & Power-on
- ❑ WAKE-IN & WAKE-OUT

## Applications

- ❑ Support embedded TCP & UDP protocols
- ❑ Support protocols PAP and CHAP used for PPP connection
- ❑ SMS & MMS & Phonebook
- ❑ TTS & DTMF (TBD)
- ❑ USB Selective Suspend & Remote wakeup
- ❑ RAS /ECM/NDIS
- ❑ Control Via AT Commands according to 3GPP TS27.005, 27.007 and ZTEWelink extended AT commands

## Driver & Tools

- ❑ Drivers
  - Windows XP, Vista, 7, 8, Win CE, Windows Mobile
  - Linux
  - Android
- ❑ Diag-log Tool
- ❑ Firmware Update Tool