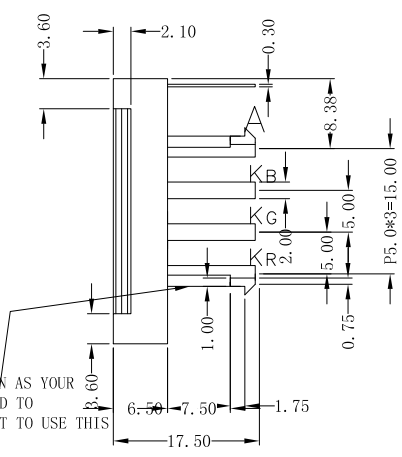
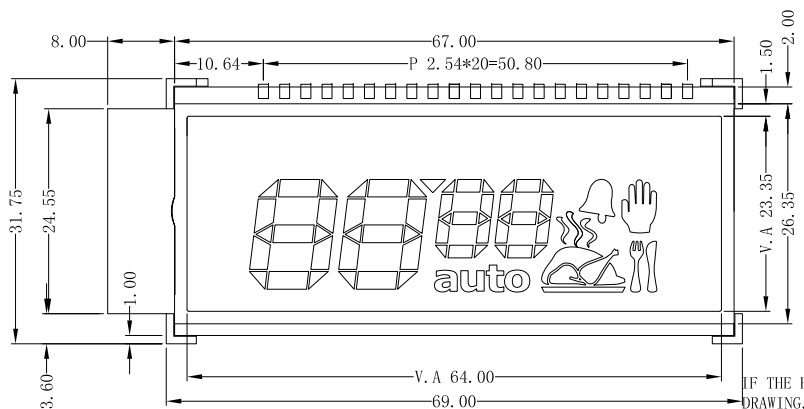
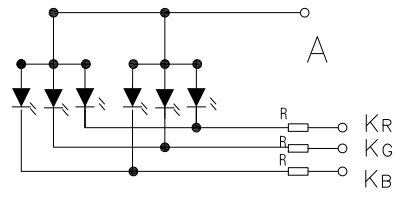
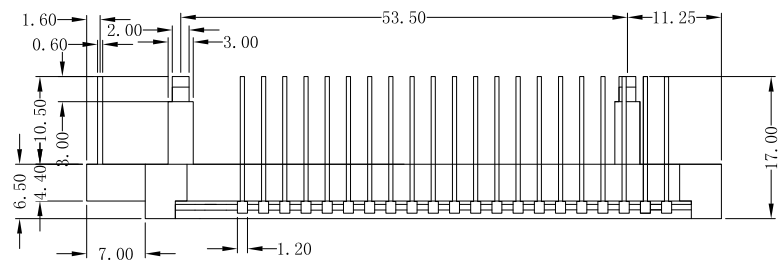
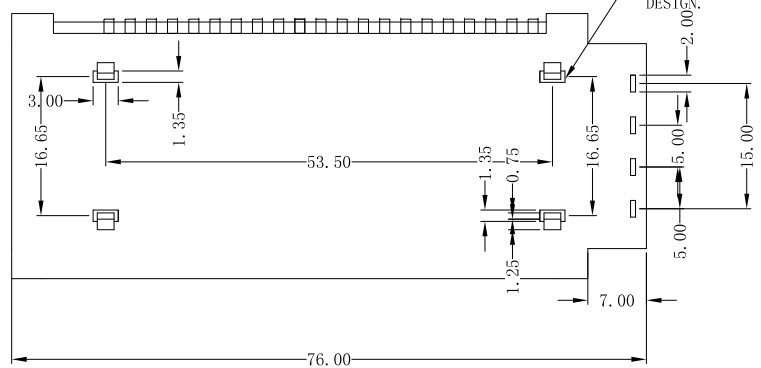


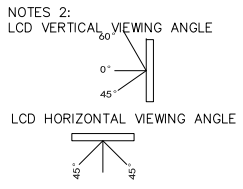
REV.	CHANGE CONTENT	BY	DATE



IF THE HOOK DESIGN AS YOUR DRAWING, IT IS HARD TO PRODUCE, WE SUGGEST TO USE THIS DESIGN.



- NOTES 1:
- 1 DISPLAY TYPE : FSTN POSITIVE
 - 2 VIEWING DIRECTION : 12 O'CLOCK
 - 3 POLARIZER MODE : TRANSFLECTIVE
 - 4 DRIVE METHOD : 1/4 DUTY
 - 5 OPERATING VOLTAGE : 5V 1/3BAIS
 - 6 OPERATING TEMP : -20℃--+70℃
 - 7 STORAGE TEMP : -30℃--+80℃
 8. BACKLIGHT: 2: 1F=300MA (113FE) , V1=50V
3: 1F=300MA (113FE) , V1=50V
 9. UNMARK TOLERANCE IS ±0.3mm
 10. ROHS.



北京海迅华田电子有限公司			DRAWING No. : HS00A95-FFC2L-VA	
			DRAWING TITLE : LCM	
			FILE NO. :	
DESIGN	JSQ	2015. 07. 10	REV. : A	SCALE : 1 : 1
CHECKED	HY	2015. 07. 10	PROJECTION:	UNIT : mm
APPROVED	WYR	2015. 07. 10		SHEET : 1/3

1 2 3 4 5 6 7 8

REV.	CHANGE CONTENT	BY	DATE

A

A

B

B

C

C

D

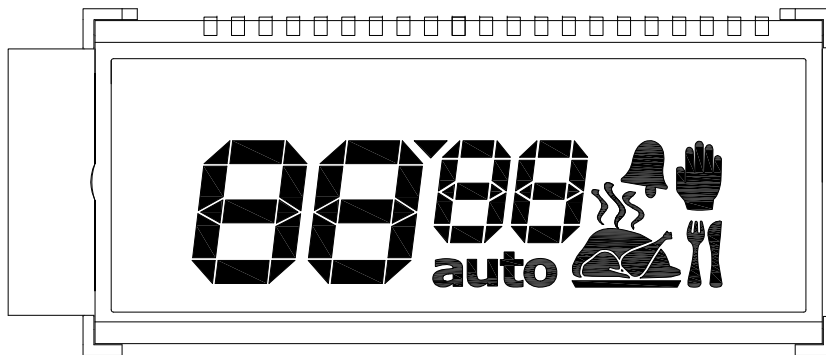
D

E

E

F

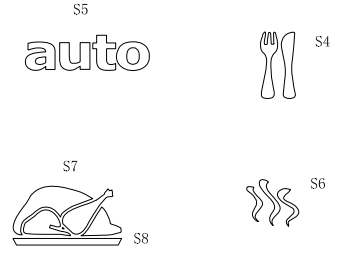
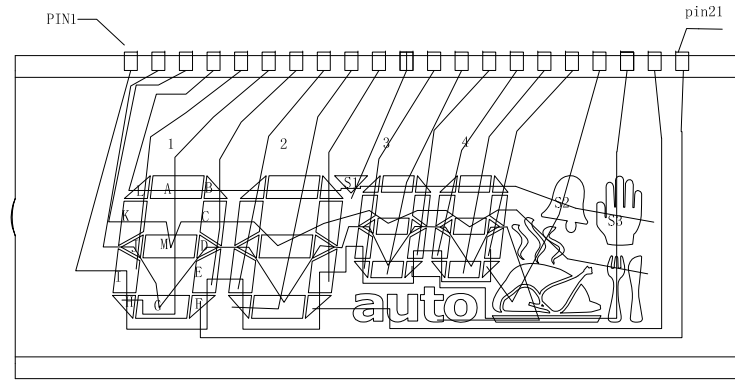
F



北京海迅华田电子有限公司			DRAWING No. :HS00A95-FFC2L-VA	
			DRAWING TITLE : LCM	
			FILE NO. :	
DESIGN	JSQ	2015.07.10	REV. : A	SCALE : 1 : 1
CHECKED	HY	2015.07.10	PROJECTION:	UNIT : mm
APPROVED	WYR	2015.07.10		SHEET : 3/3

1 2 3 4 5 6 7 8

REV.	CHANGE CONTENT	BY	DATE



PIN	1	2	3	4	5	6	7	8	9	10	11	12	13	14	15	16	17	18	19	20	21
COM1	COM1				1I	1H	1E	2I	2H	2E		3I	3H	3E	4I	4H	4E	4F	3F	2F	1F
COM2		COM2			1J	1G	1D	2J	2G	2D		3J	3G	3D	4J	4G	4D	S7	S8	S5	
COM3			COM3		1K	1M	1C	2K	2M	2C		3K	3M	3C	4K	4M	4C	S6	S4		
COM4				COM4	1L	1A	1B	2L	2A	2B	S1	3L	3A	3B	4L	4A	4B	S2	S3		

北京海迅华田电子有限公司			DRAWING No. :HS00A95-FFC2L-VA	
			DRAWING TITLE : LCM	
			FILE NO. :	
DESIGN	JSQ	2015.07.10	REV. : A	SCALE : 1 : 1
CHECKED	HY	2015.07.10	PROJECTION:	UNIT : mm
APPROVED	WYR	2015.07.10		SHEET : 2/3